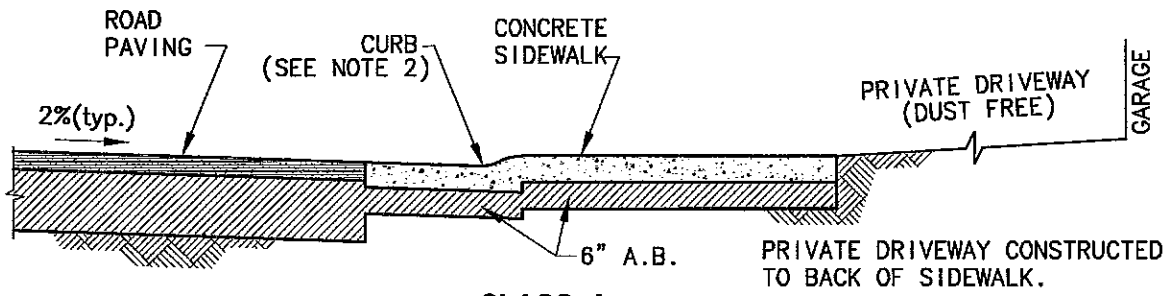
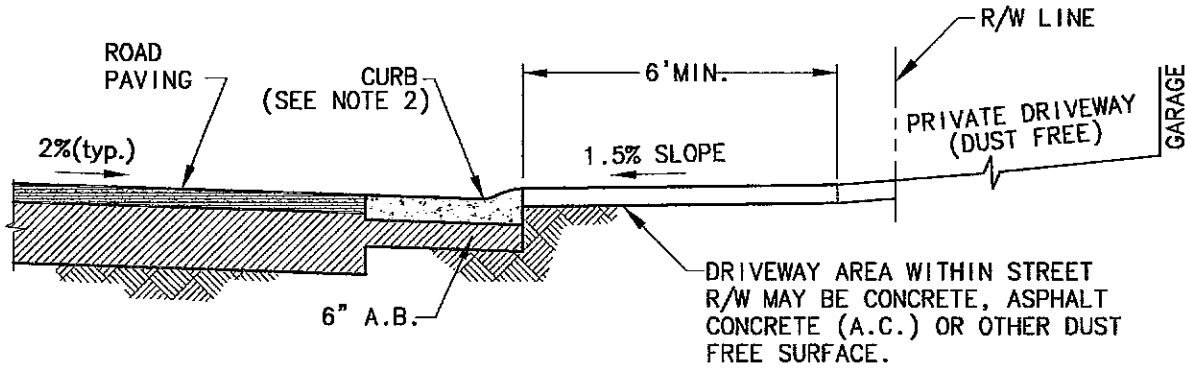


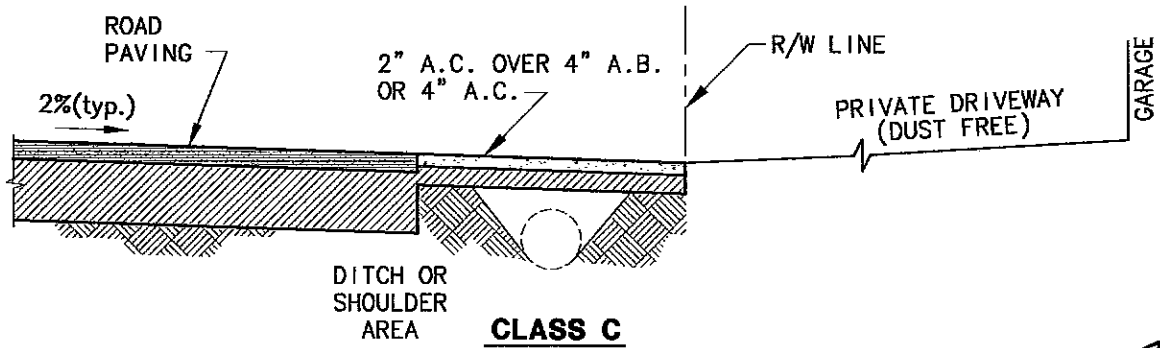
<b>DRAWING NUMBER</b>	<b>TITLE</b>
4-13	TYPICAL STREET SECTIONS AT RESIDENTIAL DRIVEWAYS (3/05)
4-14	COMMERCIAL DRIVEWAYS TYPE A-6 (3/05)
4-15-A	SPECIAL COMMERCIAL FRONTAGE ENTRANCE TYPE A-7 (3/05)
4-15-B	SIDEWALK RAMP FOR A-7 DRIVEWAYS WITHOUT ADDITIONAL R/W (3/05)
4-21	BUS TURNOUTS (3/05)
4-22	BUS STOP DETAILS (3/05)
4-23-A	SIDEWALK RAMPS DETAIL (6/05)
4-23-B	SIDEWALK RAMP DETAIL FOR PLAZA AREAS (3/05)
4-23-C	A.C. CONFORMS TO NEW SIDEWALK RAMP CONSTRUCTION (3/05)
4-24	SIDEWALK RAMP PLACEMENT (8/05)
4-25	TYPICAL CURB AND GUTTER SECTIONS (11/07)
4-26	CROSS GUTTER (3/05)
4-27	BARRIER CURB DETAIL (3/05)
4-28	UNDER SIDEWALK DRAIN (3/05)
4-29	MEANDERING SIDEWALK STANDARDS (3/05)
4-31	TRENCH SECTIONS IN IMPROVED AREAS (3/05)
4-32	PAVEMENT WIDENING DETAIL (3/05)
4-33	STREET SIGN FULLY REFLECTORIZED (3/05)
4-34	STREET NAME SIGN PLACEMENT DETAILS (3/05)
4-35	STREET NAME SIGN ON STREET LIGHT POLE PLACEMENT DETAIL(3/05)
4-36	STREET NAME SIGN INSTALLATION ON STREET LIGHT POLE (3/05)
4-37	STREET NAME SIGN PLACEMENT DETAILS (3/05)
4-38	STREET CLOSURE TIMBER BARRICADE (3/05)
4-39	SIGNS AND BARRICADES AT ABRUPT CHANGE OF PAVEMENT WIDTH (3/05)
4-40	SIDEWALK BARRICADE (3/05)
4-41-A	UTILITY POLE PLACEMENT LOCATIONS (3/05)
4-41-B	UTILITY POLE PLACEMENT LOCATIONS (3/05)
4-42	A.C. SIDEWALK CONFORM (3/05)
4-43	STANDARD CONCRETE JOINT DETAILS (3/05)
4-44	MEDIAN DETAIL (6/07)
4-45	STRIPING AND PAVEMENT MARKING DETAILS (3/07)



**CLASS A**  
(CURB, GUTTER & SIDEWALK)



**CLASS B**  
(CURB & GUTTER)

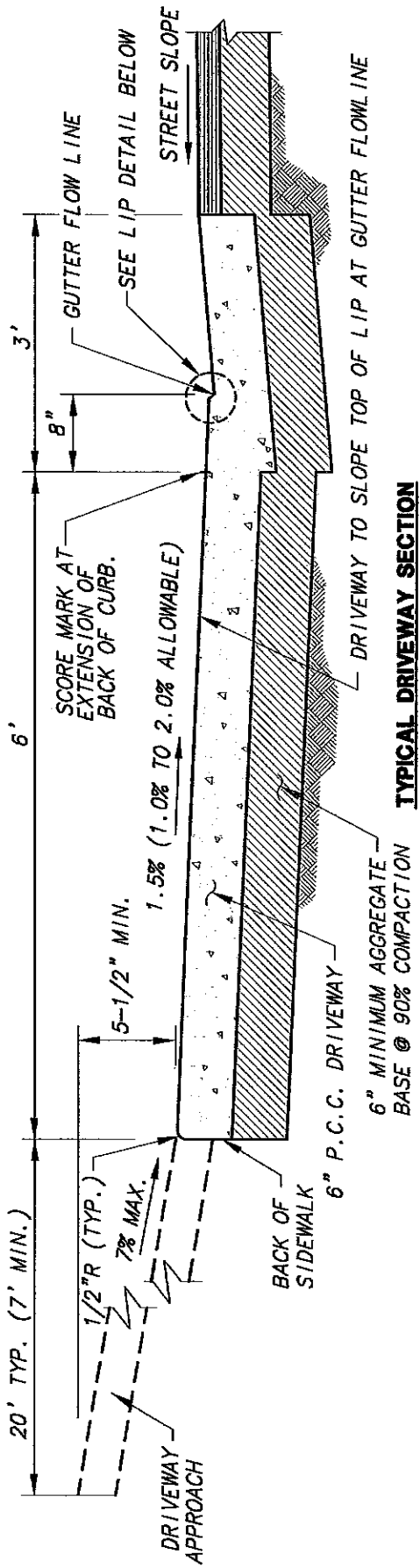


**CLASS C**  
(DITCH OR SHOULDER)

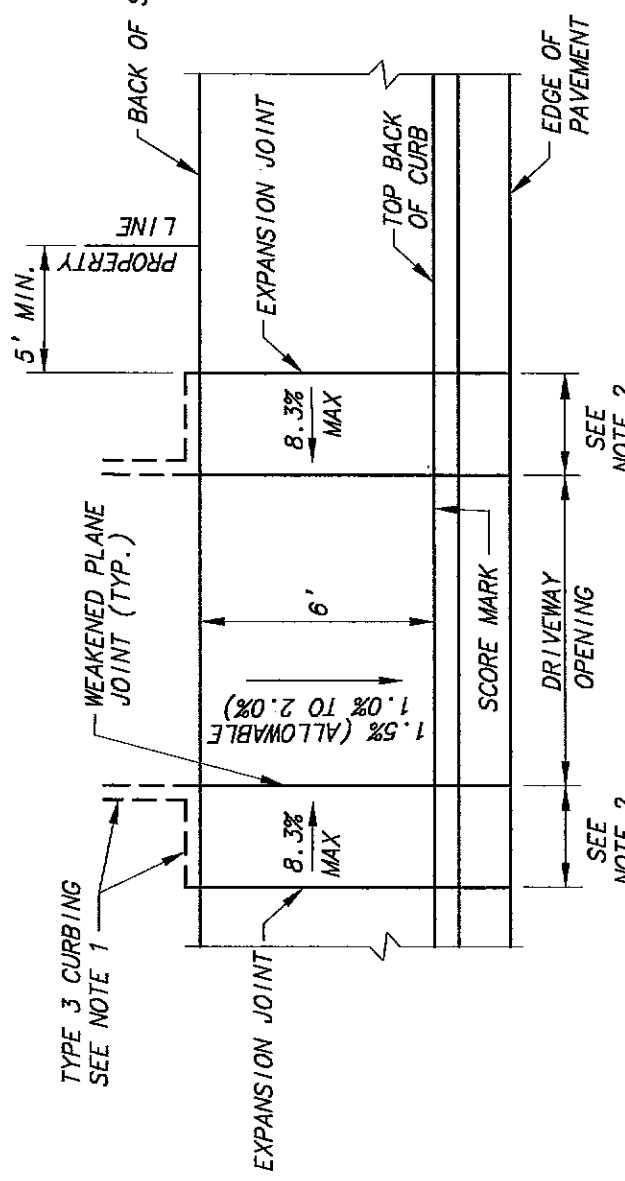
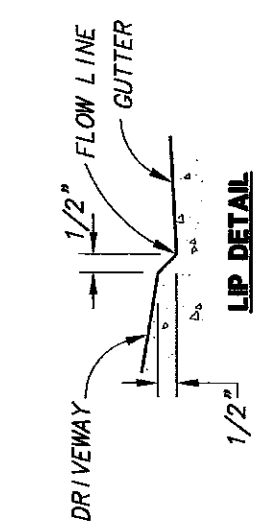
1. SEE SACRAMENTO COUNTY IMPROVEMENT STANDARDS SECTION 4-10 FOR DRIVEWAY REQUIREMENTS.
2. TYPE 1A CURB & GUTTER MAY BE USED ON 56' AND ON 60' STREETS THAT HAVE FRONT-ON DEVELOPEMENT OF SINGLE FAMILY RESIDENTIAL UNITS OR FRONT-ON DUPLEX RESIDENTIAL UNITS. ON ALL OTHER STREETS USE TYPE 2 CURB AND GUTTER WITH STANDARD A-6 OR A-7 DRIVEWAYS.

  
 CHIEF, DEPT. OF TRANSPORTATION

<b>COUNTY OF SACRAMENTO MUNICIPAL SERVICES AGENCY</b>	
<b>TYPICAL STREET SECTIONS AT RESIDENTIAL DRIVEWAYS</b>	
SCALE: NONE DATE: 03/05 DRAWN BY: TRU P.	<b>4-13</b>



**TYPICAL DRIVEWAY SECTION**



*[Signature]*  
 CHIEF, DEPT. OF TRANSPORTATION

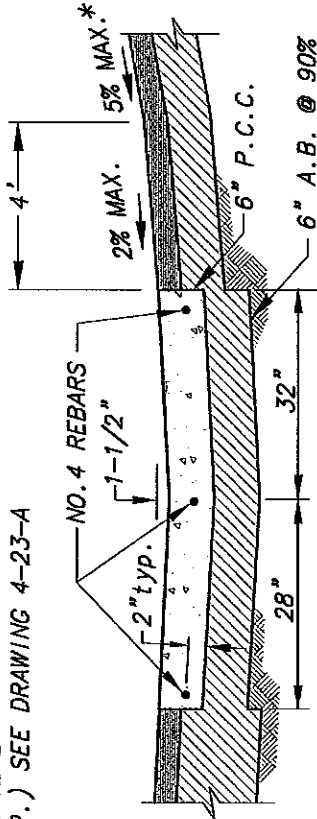
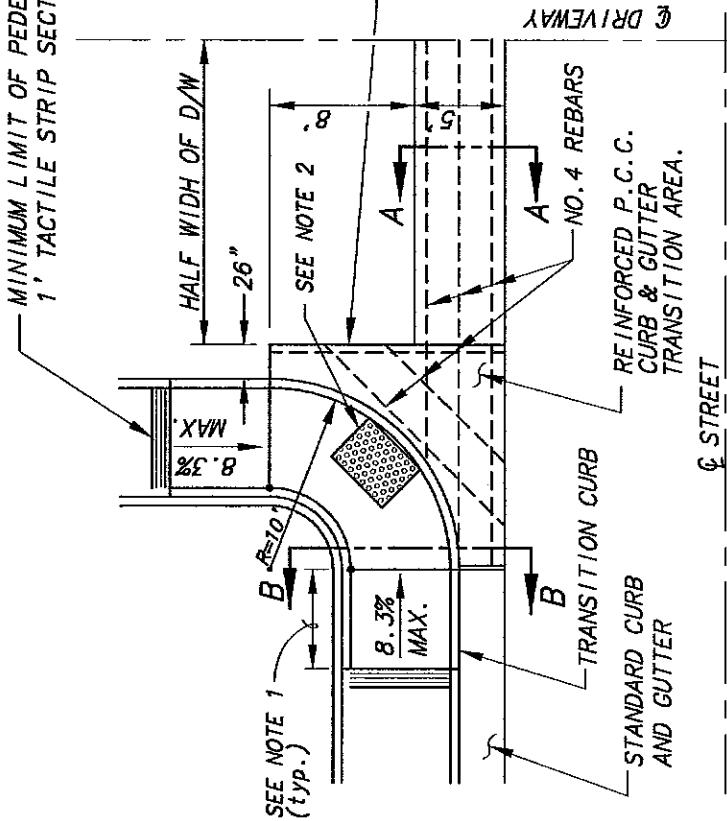
**COUNTY OF SACRAMENTO  
 MUNICIPAL SERVICES AGENCY**

**COMMERCIAL DRIVEWAYS  
 TYPE A-6**

SCALE: NONE  
 DATE: 03/05  
 DRAWN BY: TRU P. **4-14**

- NOTES:**
- TYPE 3 CURBING ON SITE SHALL EXTEND TO WHERE THE DRIVEWAY APPROACH IS A MINIMUM OF FOUR INCHES ABOVE THE BACK OF SIDEWALK ELEVATION AT THE DRIVEWAY.
  - SEE DRAWING 4-23-A FOR APPROX. LENGTH OF INCLINED PORTION OF DRIVEWAY.

MINIMUM LIMIT OF PEDESTRIAN EASEMENT  
1' TACTILE STRIP SECTION (TYP.) SEE DRAWING 4-23-A



SEE S.D. NO. 4-26  
FOR CONTACT JOINT DETAIL.

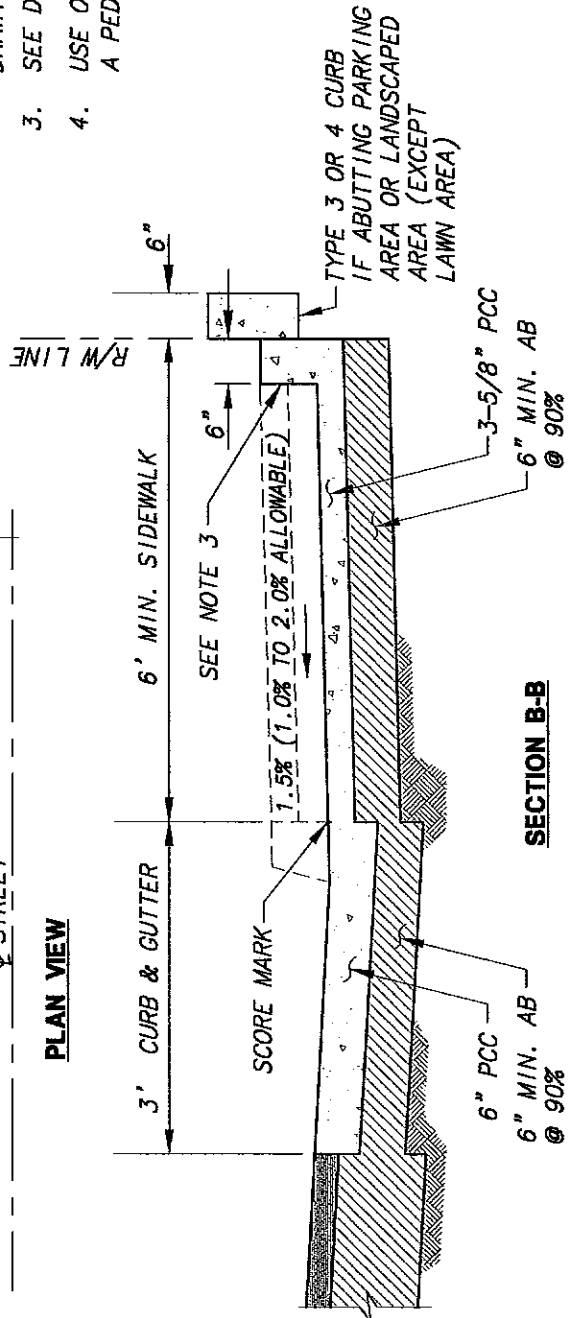
**SECTION A-A**

\* DRIVEWAY SLOPE NOT TO EXCEED 5% FOR A MINIMUM OF 20' FROM EDGE OF PAVEMENT. DRIVEWAY SLOPE SHALL NOT EXCEED 2% WITHIN FOUR FEET OF VALLEY GUTTER.

**NOTE:**

1. FOR APPROX. LENGTH OF RAMP SEE DRAWING 4-23-A
2. 4'x3' DETECTABLE WARNING MATERIAL LOCATED AT CENTER OF RETURN. SEE DRAWING 4-23-A
3. SEE DRAWING 4-23-A FOR RETAINING CURB
4. USE OF THIS DETAIL REQUIRES A PEDESTRIAN EASEMENT

**PLAN VIEW**



**SECTION B-B**

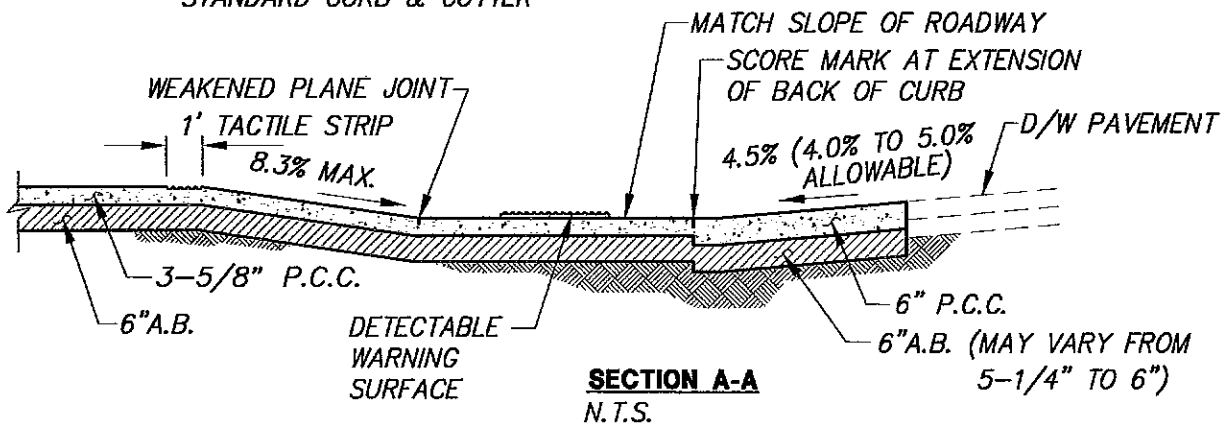
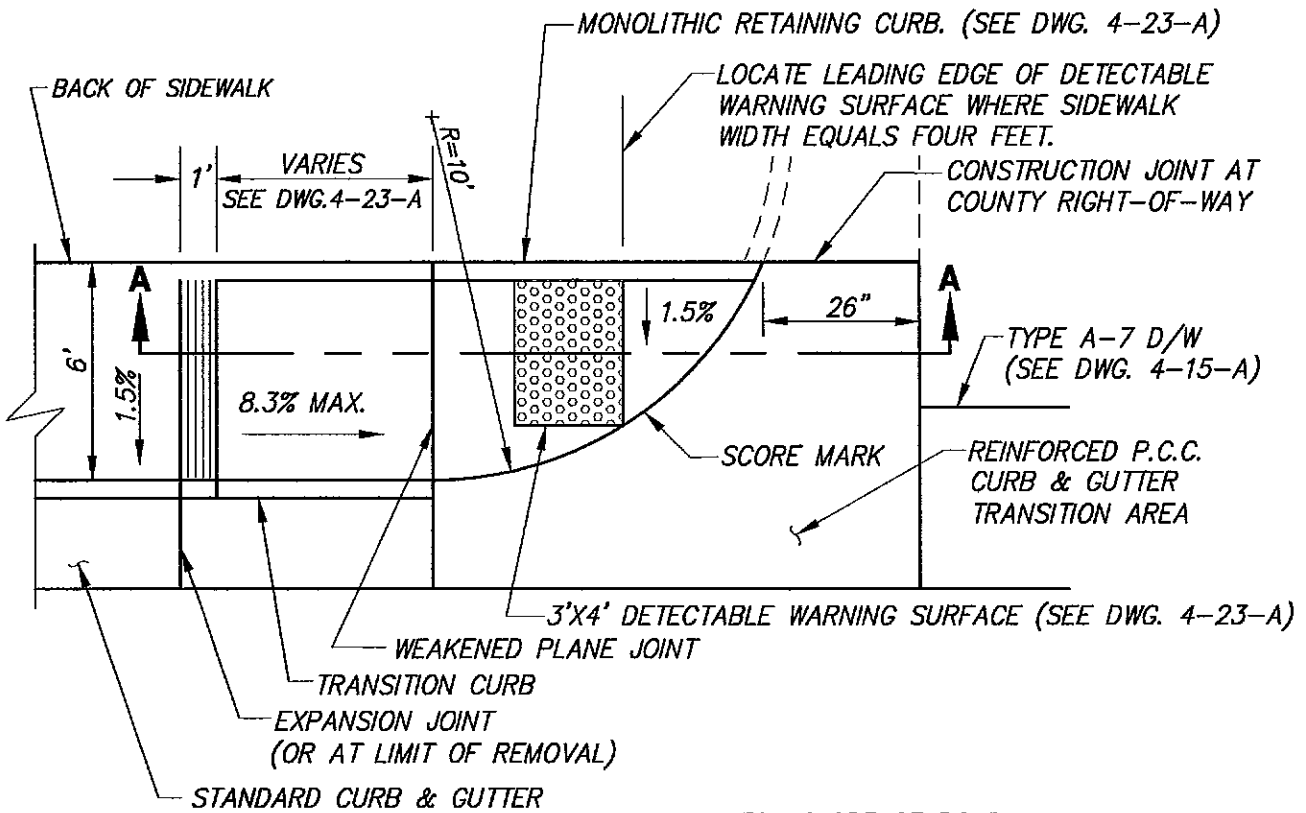
*[Signature]*  
CHIEF, DEPT. OF TRANSPORTATION

**COUNTY OF SACRAMENTO  
MUNICIPAL SERVICES AGENCY**

**SPECIAL COMMERCIAL  
FRONTAGE ENTRANCE  
TYPE A-7**

SCALE: NONE  
DATE: 03/05  
DRAWN BY: TRU P.

**4-15-A**

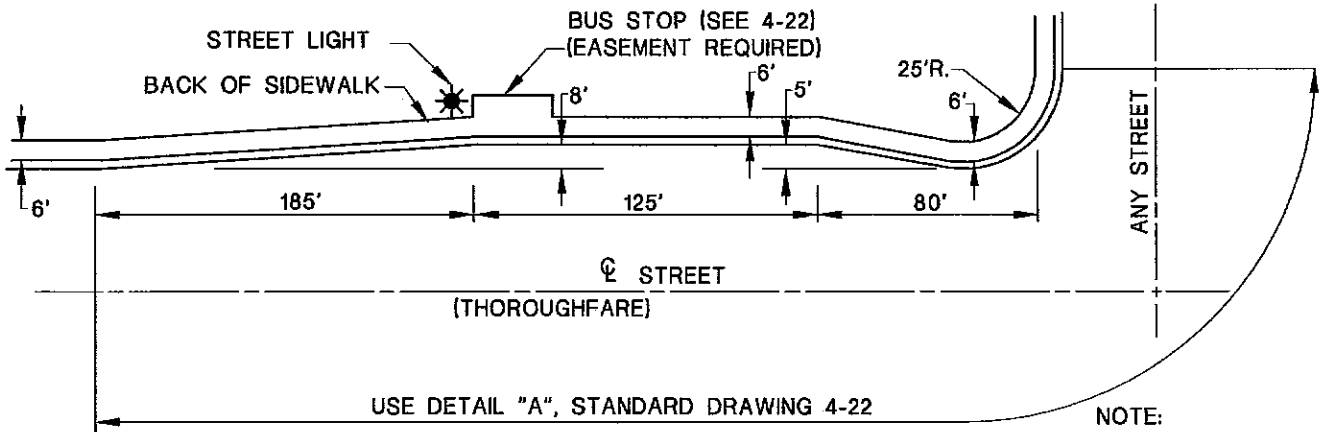


**NOTES:**

1. SEE DRAWING 4-15-A FOR REINFORCING & ADDITIONAL CONSTRUCTION NOTES.
2. THIS DETAIL IS NOT FOR NEW CONSTRUCTION. IT MAY BE USED FOR RECONSTRUCTION OF TYPE A-7 DRIVEWAYS IN AREAS WITHOUT SUFFICIENT RIGHT-OF-WAY FOR STANDARD TYPE A-7 DRIVEWAY CONSTRUCTION AND WITHOUT WALKWAY EXTENSION ON TO ABUTTING PROPERTY.
3. NO PULL BOX, UTILITY VAULT, UTILITY POLE, MANHOLE, TRAFFIC SIGNAL POLE, OR SIMILAR APPURTENANCE SHALL BE LOCATED WITHIN SIDEWALK RAMP AREA.
4. IT IS DESIREABLE TO LOCATE ALL DRAIN INLETS OUT OF SIDEWALK RAMP AREA. USE OF DRAIN INLET WITHIN RAMP AREA REQUIRES SPECIAL DESIGN OF INLETS.

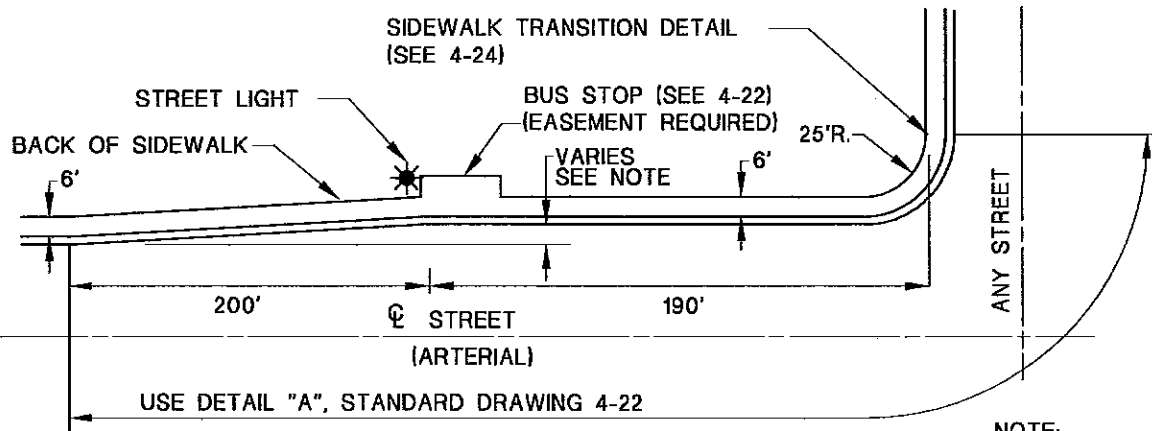
*[Signature]*  
 CHIEF, DEPT. OF TRANSPORTATION

<b>COUNTY OF SACRAMENTO MUNICIPAL SERVICES AGENCY</b>	
<b>SIDEWALK RAMP FOR A-7 DRIVEWAYS WITHOUT ADDITIONAL R/W</b>	
SCALE: NONE DATE: 03/05 DRAWN BY: TRU P.	<b>4-15-B</b>



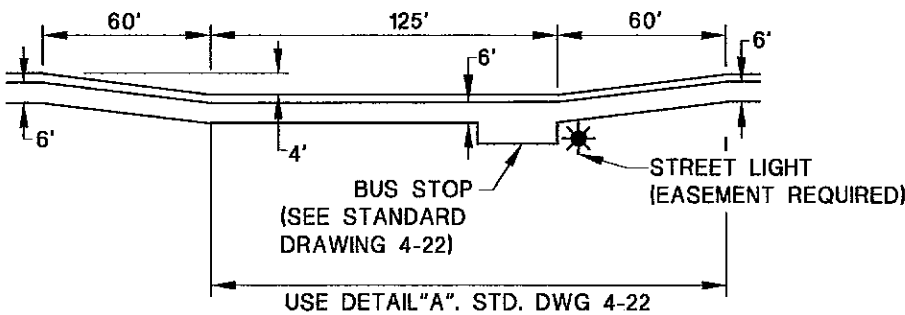
**BUS TURNOUT ON THOROUGHFARE STREETS**

NOTE:  
SEE ALSO DWG. 4-5  
AND 4-9-A FOR BUS  
TURNOUT GEOMETRY



**BUS TURNOUT ON ARTERIAL STREETS**

NOTE:  
SEE ALSO DWG. 4-8-A  
AND 4-8-B FOR BUS  
TURNOUT GEOMETRY



**TYPICAL MID-BLOCK BUS TURNOUT**

**COUNTY OF SACRAMENTO  
MUNICIPAL SERVICES AGENCY**

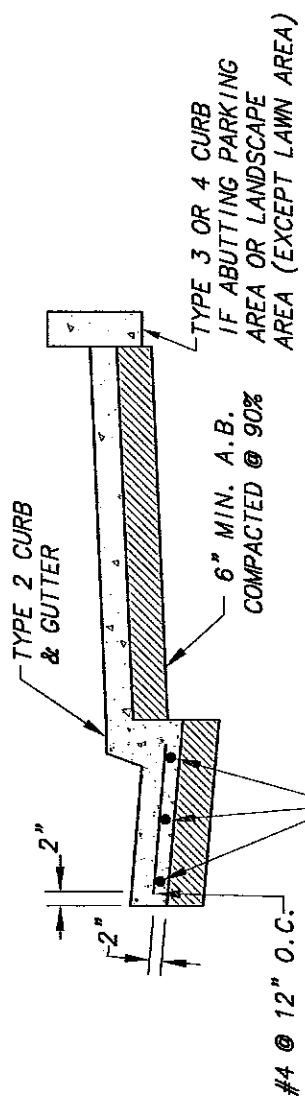
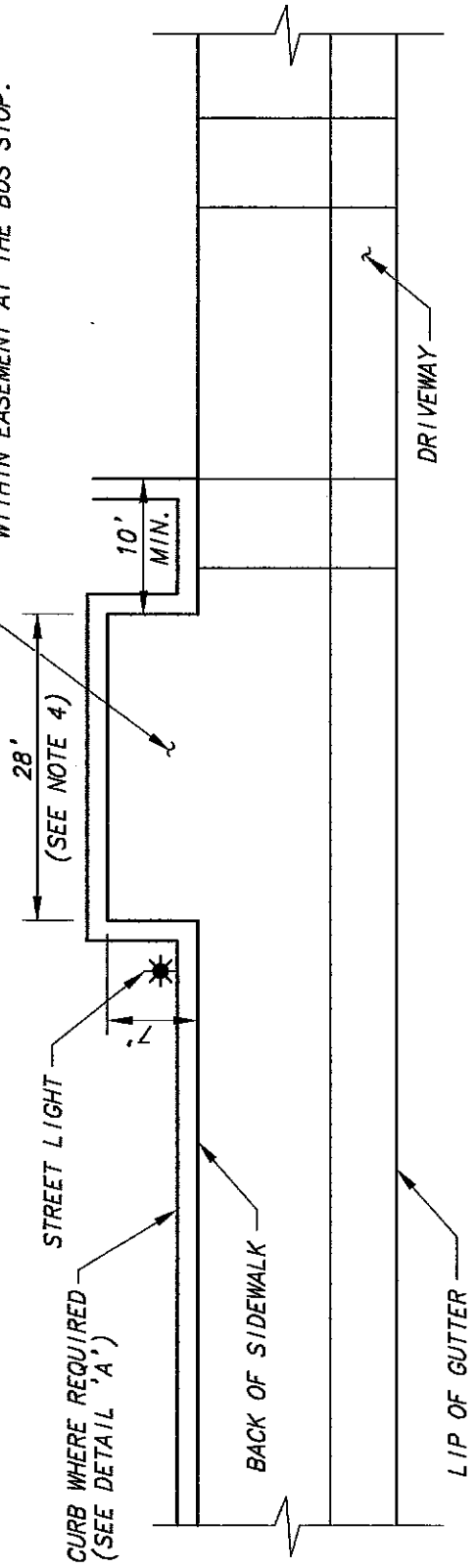
**BUS TURNOUTS**

*[Signature]*  
CHIEF, DEPT. OF TRANSPORTATION

SCALE: NONE  
DATE: 03/05  
DRAWN BY: TRU P.

**4-21**

ADDITIONAL 3-5/8" P.C.C. SIDEWALK ON 6" A.B. AT 2% CROSS SLOPE (BUS SHELTER PAD) AREA WITHIN EASEMENT AT THE BUS STOP.



**DETAIL 'A'**

- NOTES:**
1. FOR BUS STOPS WITHOUT TURNOUTS, DETAIL 'A' SECTION SHALL BE USED FOR 100' EACH SIDE OF BUS STOP SIGN.
  2. SEE STANDARD DRAWING 4-21 FOR APPLICATIONS OF DETAIL 'A' AT BUS STOP TURNOUTS.
  3. TRANSITION FROM REINFORCED TYPE 2 CURB TO ABUTTING CURB AND GUTTER SECTION IN 5' BEYOND LIMITS OF BUS STOP AREA AS SHOWN ON DWG. 4-21.
  4. PAD LENGTH MAY BE 14' AT MINOR STREET INTERSECTIONS & MID BLOCK LOCATIONS.

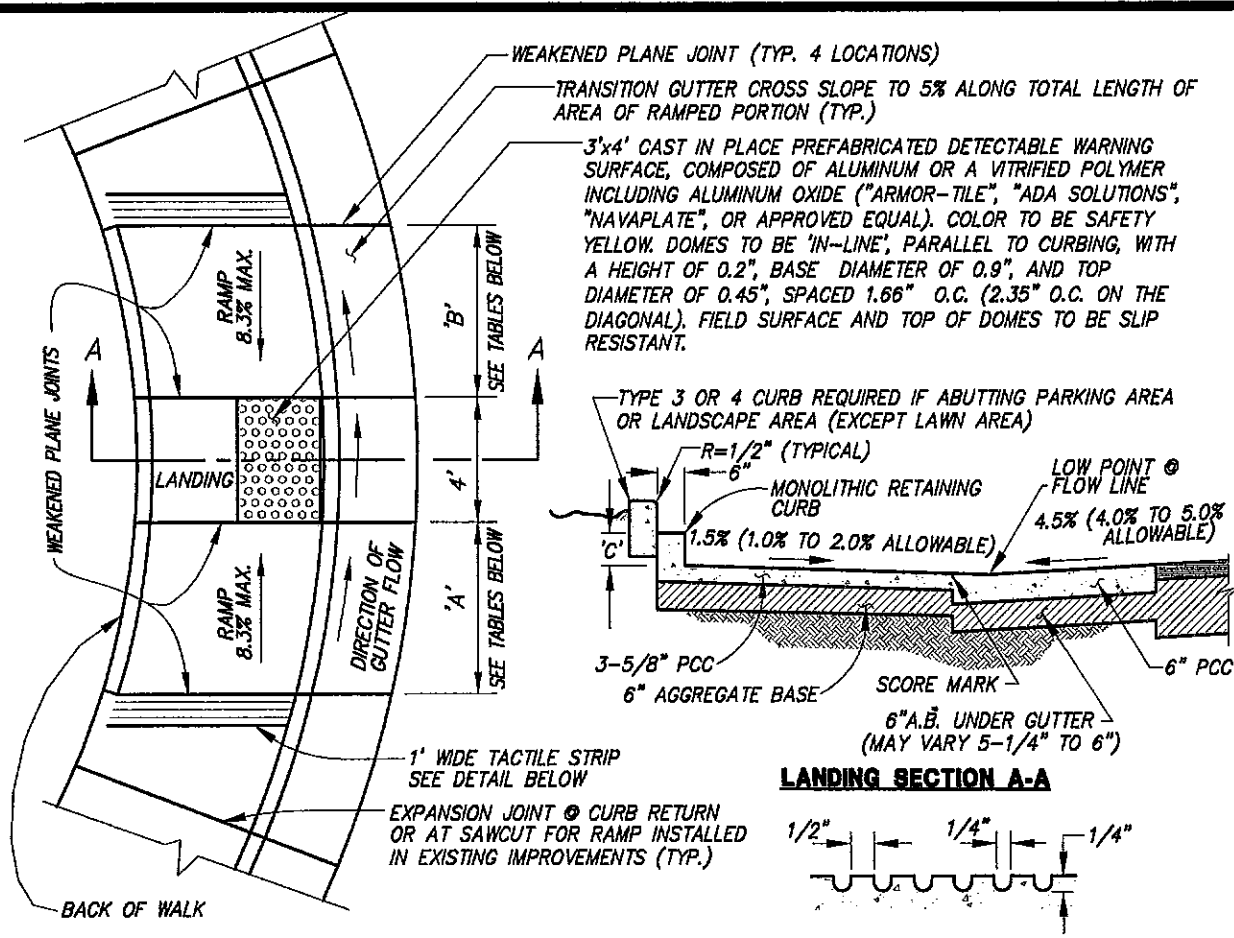
**COUNTY OF SACRAMENTO  
MUNICIPAL SERVICES AGENCY**

**BUS STOP DETAILS**

SCALE: NONE  
DATE: 03/05  
DRAWN BY: TRU P.

**4-22**

*[Signature]*  
CHIEF, DEPT. OF TRANSPORTATION



**RAMP PLAN**

**TACTILE STRIP GROOVE DETAIL**

Type 2 Curb	Approx. Ramp Length	
Slope Of Gutter	"A"	"B"
0.5% to 1.0%	7'-6"	6'-0"
> 1.0% to 1.5%	8'-0"	6'-0"
> 1.5% to 1.8%	8'-6"	5'-6"
> 1.8% to 2.1%	9'-0"	5'-6"
> 2.1% to 2.4%	9'-6"	5'-0"
> 2.4% to 3.0%	10'-0"	5'-0"
> 3.0%	SEE NOTE #4	

Type 1A Curb	Approx. Ramp Length	
Slope Of Gutter	"A"	"B"
0.5% to 1.0%	4'-6"	4'-0"
> 1.0% to 1.7%	5'-0"	3'-6"
> 1.7% to 2.2%	5'-6"	3'-6"
> 2.2% to 2.7%	6'-0"	3'-0"
> 2.7% to 3.1%	6'-6"	3'-0"
> 3.1% to 3.4%	7'-0"	3'-0"
> 3.4% to 3.7%	7'-6"	3'-0"
> 3.7% to 3.9%	8'-0"	3'-0"
> 3.9% to 4.3%	9'-0"	3'-0"
> 4.3% to 5.0%	10'-0"	2'-6"
> 5.0%	SEE NOTE #4	

CURB TYPE	TYPE 1/1A	TYPE 2
* DIM 'C'	3-5/8"	6"

\* OR AS NEEDED TO MATCH EXISTING ON SITE IMPROVEMENTS, 8" MAX.

**NOTES:**

1. DIMENSION 'A' IS THE LENGTH OF THE INCLINED PORTION OF THE RAMP THAT SLOPES IN THE SAME DIRECTION AS THE FLOW OF THE GUTTER.
2. DIMENSION 'B' IS THE LENGTH OF THE INCLINED PORTION OF THE RAMP THAT SLOPES IN THE OPPOSITE DIRECTION AS THE FLOW OF THE GUTTER.
3. RAMPS SHALL HAVE A HEAVY BROOM FINISH TRANSVERSE TO THEIR SLOPE.
4. REQUIRES SPECIAL DESIGN APPROVAL BY THE CHIEF OF THE DEPARTMENT OF TRANSPORTATION.
5. NO PULL BOX, UTILITY VAULT, UTILITY POLE, TRAFFIC SIGNAL POLE, MANHOLE, OR SIMILAR APPURTENANCE SHALL BE LOCATED WITHIN SIDEWALK RAMP AREA.
6. SEE NOTE 6 DWG 4-24 FOR RAMPS WITH 6' WIDE RAMP PANS.

*[Signature]*  
CHIEF, DEPT. OF TRANSPORTATION

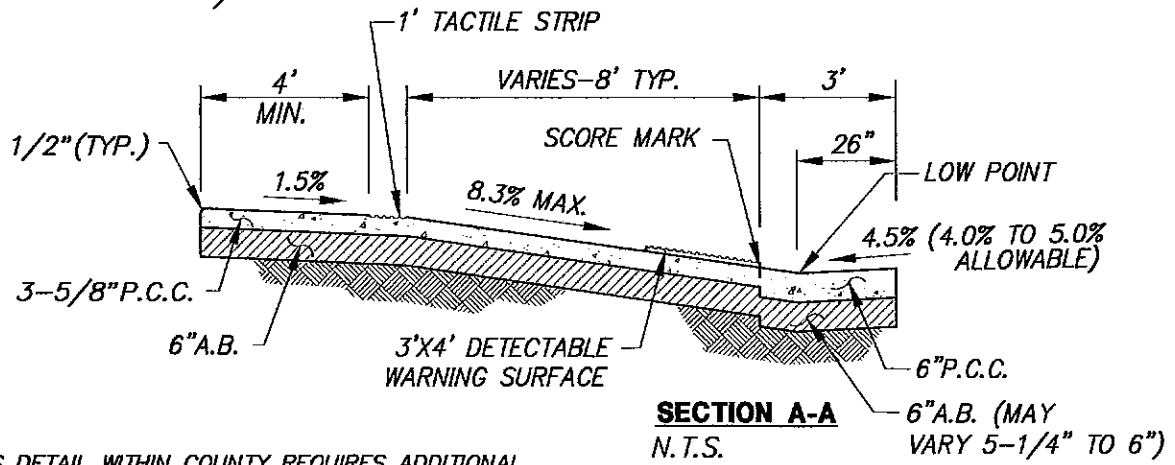
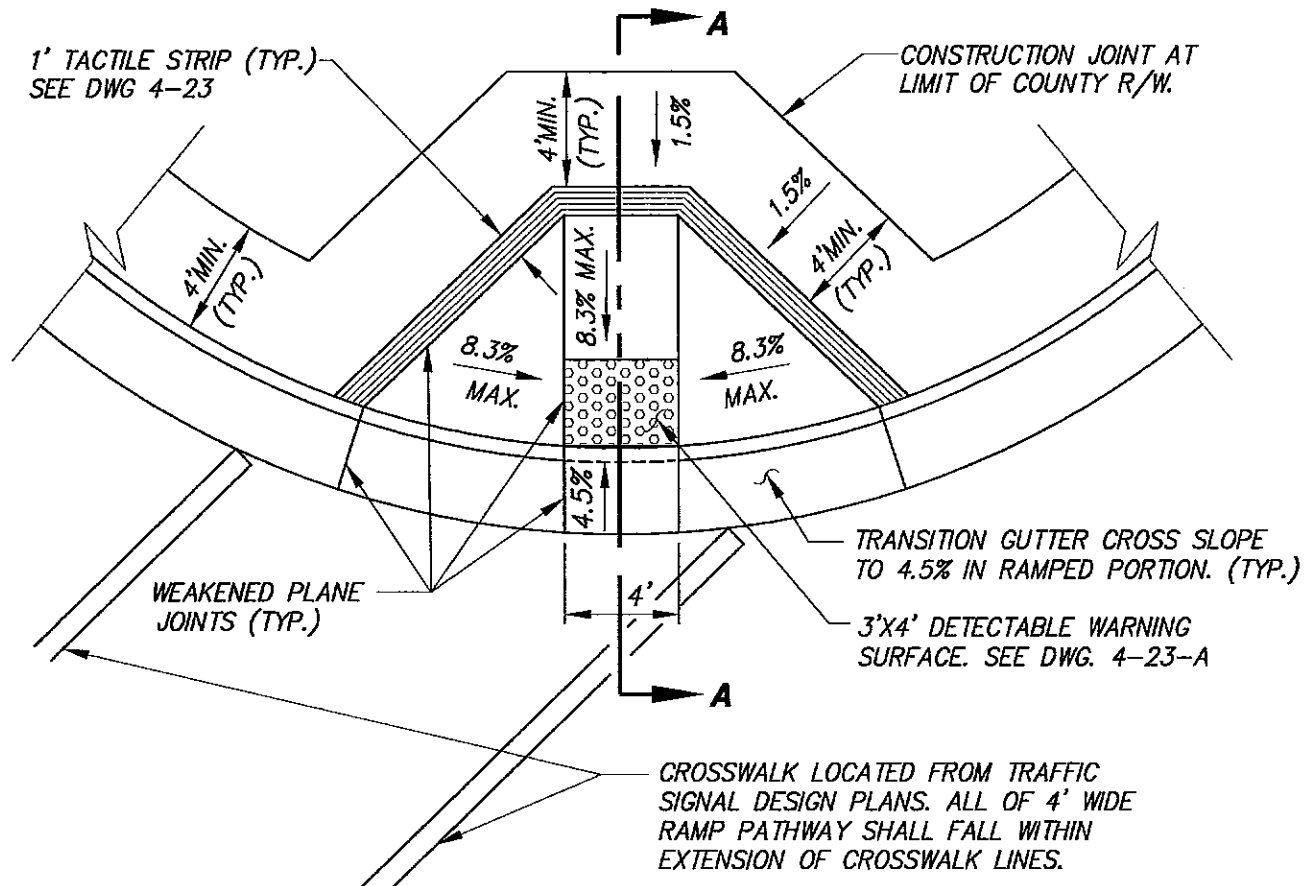
**COUNTY OF SACRAMENTO  
MUNICIPAL SERVICES AGENCY**

**SIDEWALK RAMPS  
DETAIL**

SCALE: NONE  
DATE: 06/05  
DRAWN BY: TRU P.

**4-23-A**



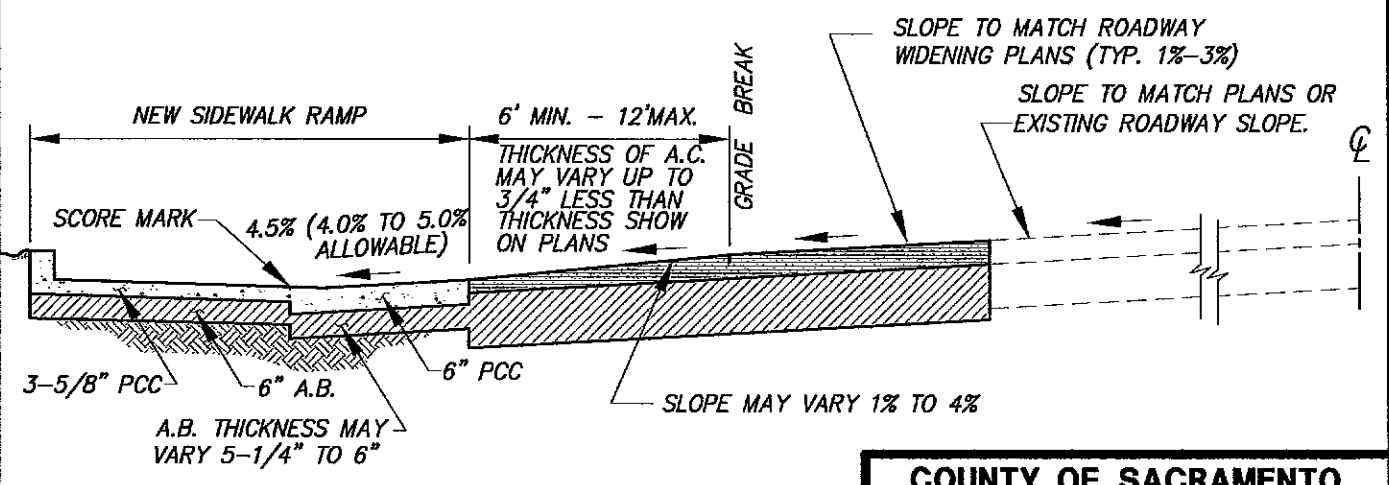
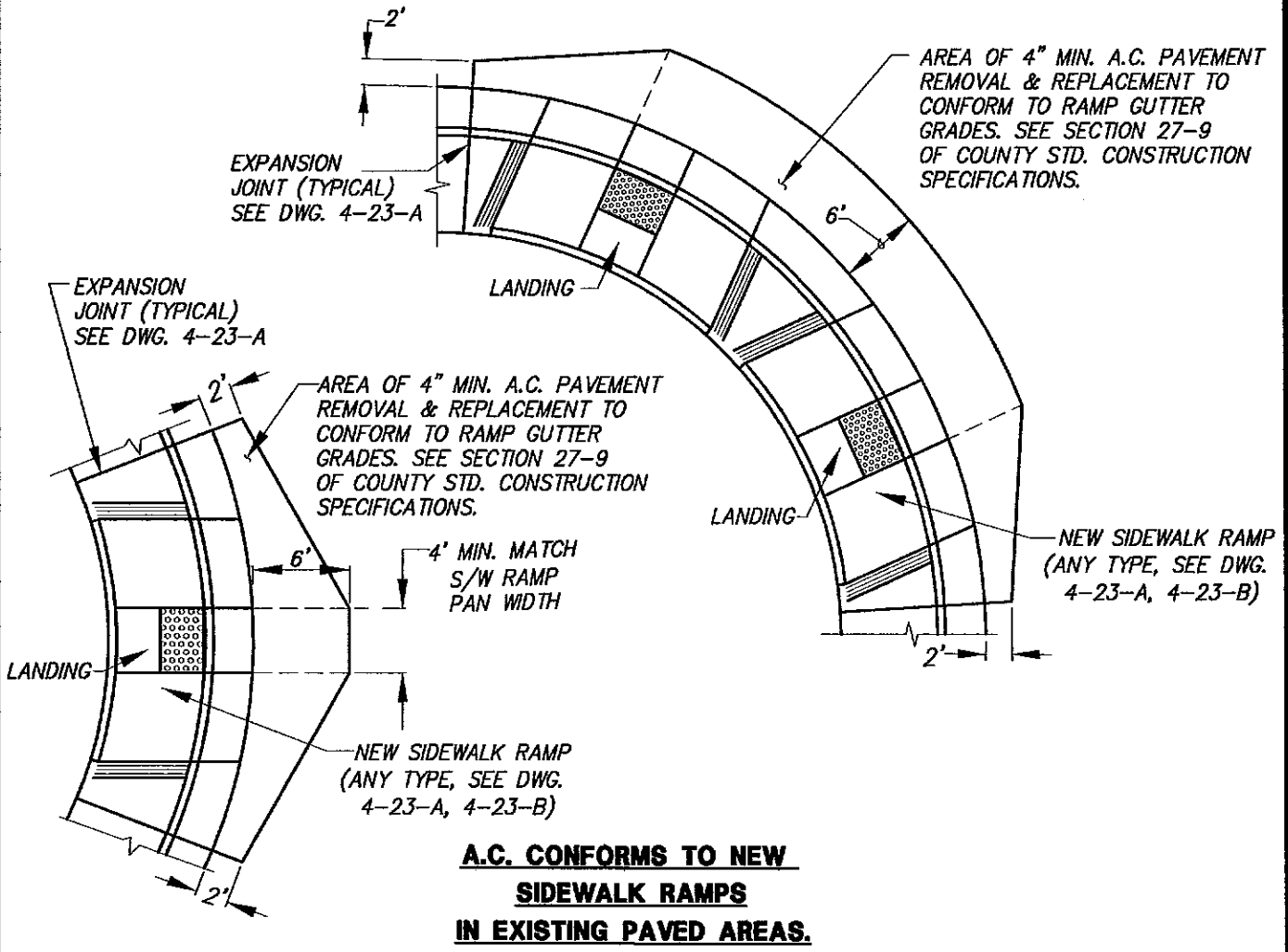


**NOTES:**

1. USE OF THIS DETAIL WITHIN COUNTY REQUIRES ADDITIONAL AREA OF COUNTY R/W OR SIDEWALK EASEMENT
2. SEE DWG. 4-23-A FOR FINISH & MATERIAL REQUIREMENTS.
3. SEE DWG. 4-24 FOR RAMP PLACEMENT REQUIREMENTS. IF TWO RAMPS OF THIS DESIGN ARE TO BE LOCATED ON ONE CORNER, RAMPS SHALL BE A MINIMUM OF 5' APART AT BACK OF CURB.
4. NO PULL BOX, UTILITY VAULT, UTILITY POLE, MANHOLE, TRAFFIC SIGNAL POLE, OR SIMILAR APPURTENANCE SHALL BE LOCATED WITHIN SIDEWALK RAMP AREA.
5. IT IS DESIREABLE TO LOCATE ALL DRAIN INLETS OUT OF SIDEWALK RAMP AREA. USE OF DRAIN INLET WITHIN RAMP AREA REQUIRES SPECIAL DESIGN OF INLETS.
6. SEE DWG. 4-25 FOR SIDEWALK GRADE TOLERANCE.

*[Signature]*  
CHIEF, DEPT. OF TRANSPORTATION

<b>COUNTY OF SACRAMENTO MUNICIPAL SERVICES AGENCY</b>	
<b>SIDEWALK RAMP DETAIL FOR PLAZA AREAS</b>	
SCALE: NONE DATE: 03/05 DRAWN BY: TRU P.	<b>4-23-B</b>



**A.C. CONFORMS TO NEW SIDEWALK RAMPS WITH PAVEMENT WIDENING OR ROADWAY CONSTRUCTION**

*[Signature]*  
 CHIEF, DEPT. OF TRANSPORTATION

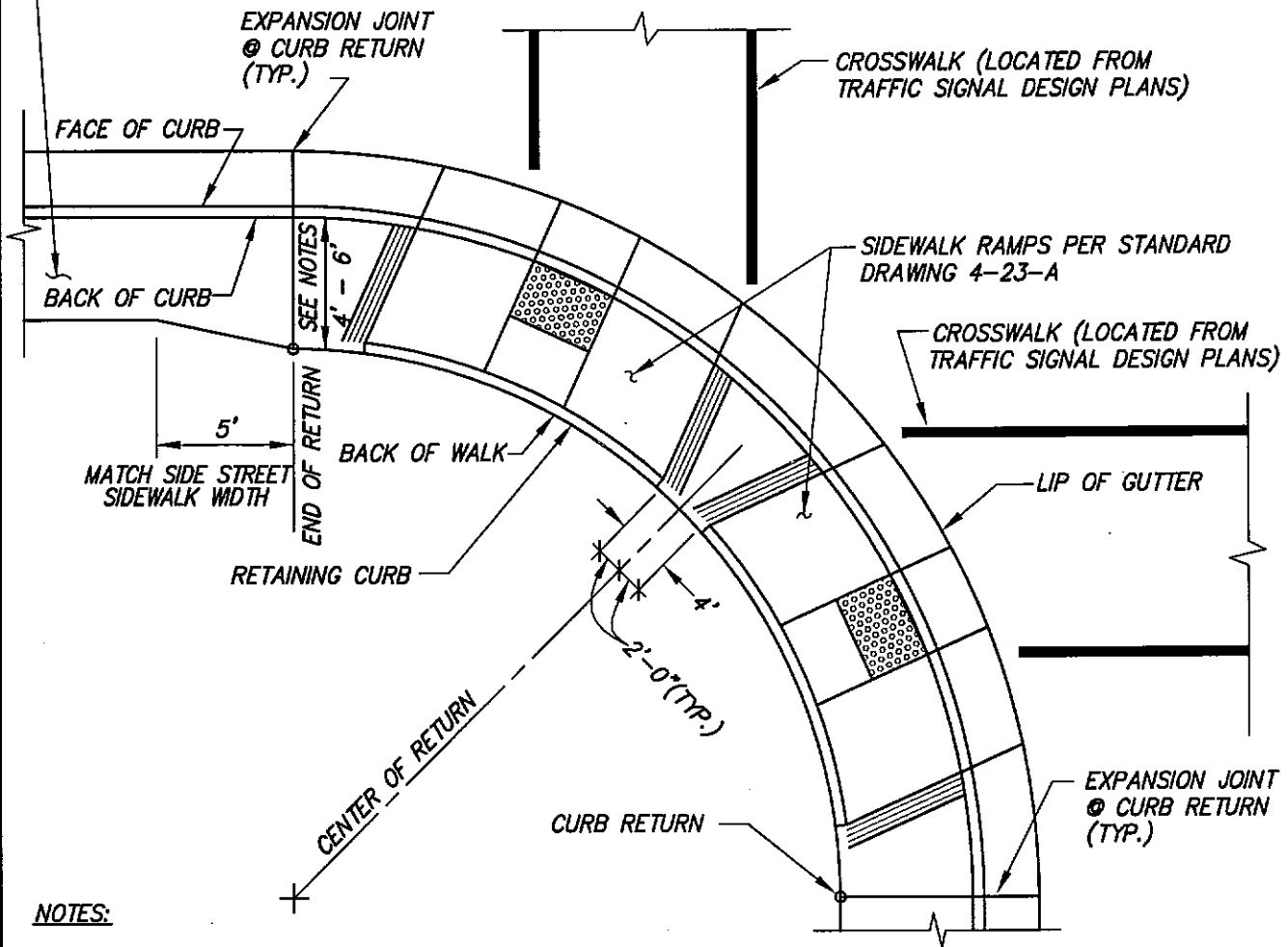
**COUNTY OF SACRAMENTO MUNICIPAL SERVICES AGENCY**

**A.C. CONFORMS TO NEW SIDEWALK RAMPS**

SCALE: NONE  
 DATE: 03/05  
 DRAWN BY: TRU P.

**4-23-C**

SIDEWALK WIDTH TO REMAIN CONSTANT AROUND RETURN. TRANSITION TO MINOR STREET SIDEWALK WIDTH TO OCCUR OUT OF RAMP CONSTRUCTION AREA WITHIN 5'. TRANSITION TYPE 2 CURB AND GUTTER TO MATCH MINOR STREET CURB AND GUTTER WITHIN SAME 5' AREA.



**NOTES:**

1. AT INTERSECTIONS HAVING A STREET WITH A RIGHT-OF-WAY WIDTH OF 80 FEET OR GREATER, THE CORNER RETURNS SHALL HAVE TWO (2) RAMPS AS SHOWN, AND TYPE 2 CURB & GUTTER AROUND THE RETURNS, AND SIDEWALK WIDTH SHALL BE 6' AROUND THE RETURNS. EXCEPTIONS - SEE NOTES 5 & 6.
2. AT INTERSECTIONS WITH NO MAJOR (84, 108, OR 130 FOOT) STREET, A SINGLE RAMP AT THE CENTER OF THE RETURNS AND TYPE 1 OR 1A CURB & GUTTER MAY BE USED. SIDEWALK WIDTH AROUND RETURNS SHALL BE 4' FOR INTERSECTIONS OF STREETS WITH SINGLE FAMILY RESIDENTIAL DEVELOPMENT.
3. THE PLANS SHALL SHOW THE CORRECT NUMBER & LOCATION OF RAMPS ON EACH CORNER.
4. FULL WIDTH OF RAMP PAN (THE FULLY DEPRESSED PORTION OF RAMP) SHALL BE LOCATED WITHIN THE EXTENSION OF THE ASSOCIATED CROSSWALK STRIPES, WHERE CROSSWALKS EXIST.
5. ON MAJOR STREETS (AS DEFINED IN NOTE #1 ABOVE) WITH A CONTINUOUS RAISED MEDIAN ACROSS THE INTERSECTION, A SINGLE STANDARD SIDEWALK RAMP IS TO BE INSTALLED. LOCATE RAMP AT CENTER OF RETURN.
6. FOR CORNERS WITH TWO STRIPED CROSSWALKS AND WITH OBSTRUCTIONS THAT PREVENT THE CONSTRUCTION OF TWO STANDARD RAMPS, A SINGLE SIDEWALK RAMP MAY BE INSTALLED CENTERED IN THE TWO CROSSWALKS. THE WIDTH OF RAMP PAN (THE FULLY DEPRESSED PORTION OF RAMP) IS TO BE 6'. THE WARNING SURFACE MATERIAL SHALL BE THREE FEET BY SIX FEET. USE OF THIS OPTION REQUIRES PRIOR WRITTEN APPROVAL BY CHIEF OF THE DEPARTMENT OF TRANSPORTATION.

  
 CHIEF, DEPT. OF TRANSPORTATION

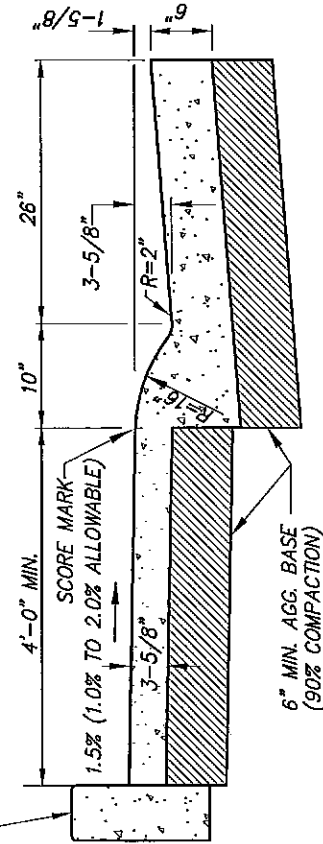
**COUNTY OF SACRAMENTO  
 MUNICIPAL SERVICES AGENCY**

**SIDEWALK RAMP  
 PLACEMENT**

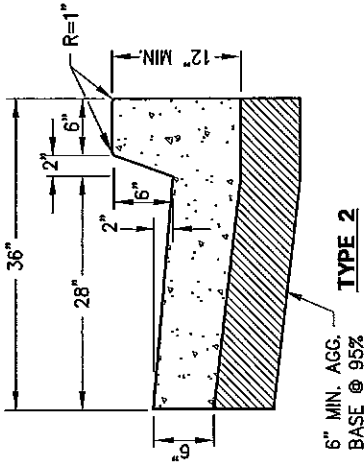
SCALE: NONE  
 DATE: 08/05  
 DRAWN BY: TRU P.

**4-24**

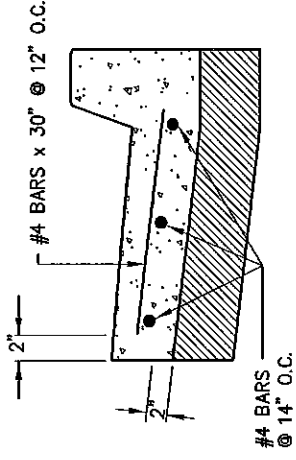
INSTALL TYPE 3 OR TYPE 4 CURB IF ABUTTING PARKING AREA OR LANDSCAPING (EXCEPT LAWN AREA). SEE DWG. 4-27



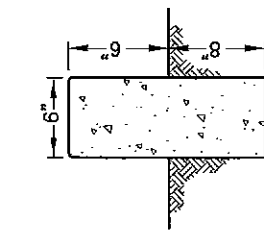
**TYPE 1A & TYPICAL SIDEWALK**



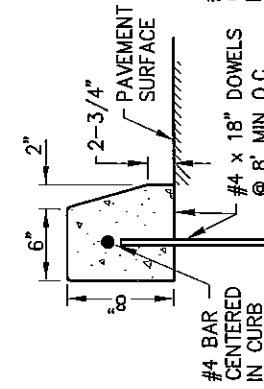
**TYPE 2**



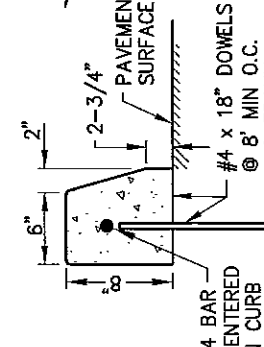
**TYPE 2 REINFORCED**



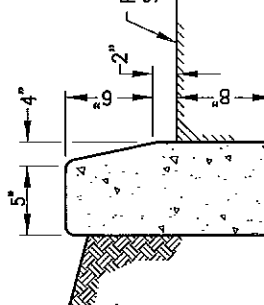
**TYPE 3**



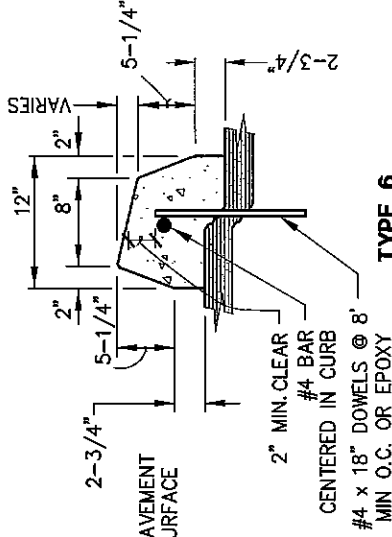
**TYPE 4**



**TYPE 4A**



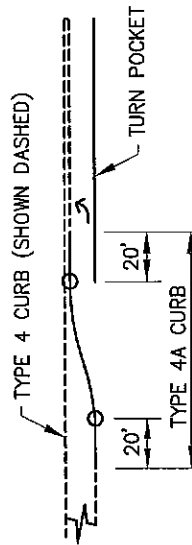
**TYPE 5**



**TYPE 6**

**NOTES:**

SEE SECTION 27-3.01 OF STANDARD CONSTRUCTION SPECIFICATIONS FOR REQUIREMENT FOR EXPANSION JOINTS, WEAKENED PLANE JOINTS AND SCORE MARKS. 1/2" RADIUS ON EXPOSED EDGES UNLESS NOTED OTHERWISE.



**PLAN FOR TYPICAL PLACEMENT OF TYPE 4A CURB**

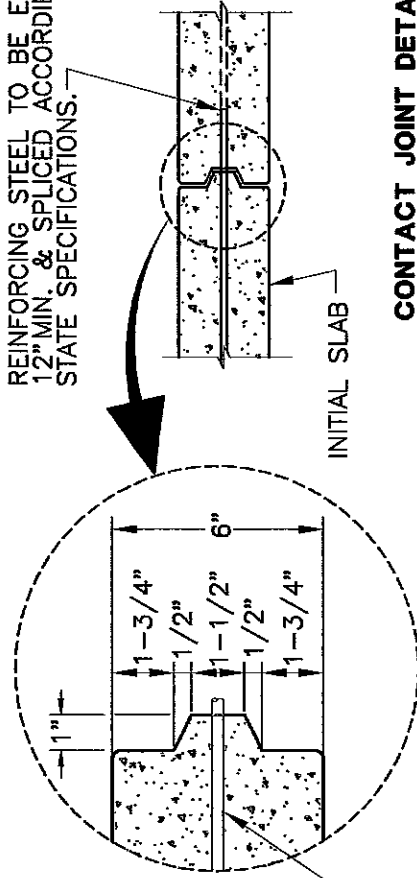
**COUNTY OF SACRAMENTO  
MUNICIPAL SERVICES AGENCY**

**TYPICAL  
CURB & GUTTER  
SECTIONS**

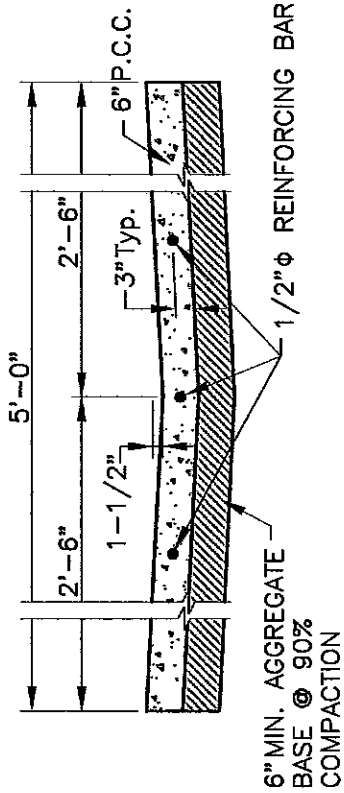
SCALE: NONE  
DATE: 11/06/2007  
DRAWN BY: TRU P.

CHIEF, DEPT. OF TRANSPORTATION

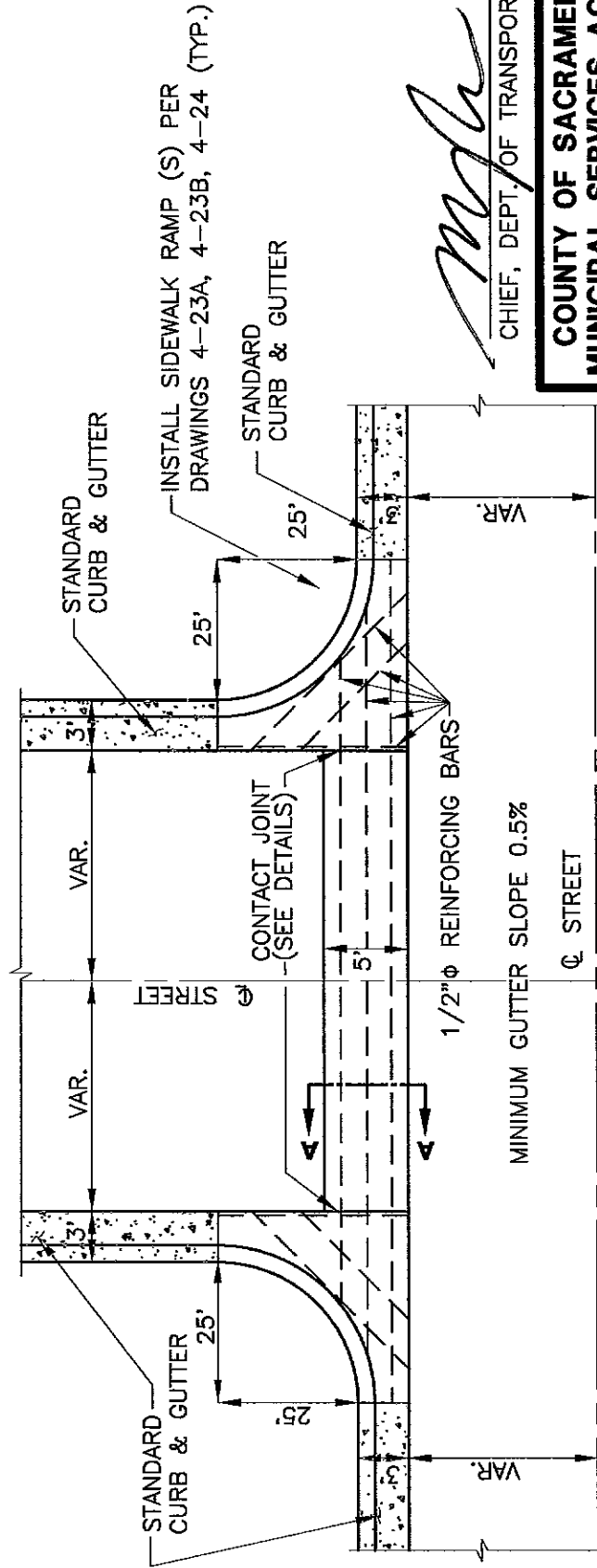
REINFORCING STEEL TO BE EXTENDED 12" MIN. & SPLICED ACCORDING TO STATE SPECIFICATIONS.



**CONTACT JOINT DETAIL**



**SECTION A-A**



**PLAN**

*M. J. ...*  
 CHIEF, DEPT. OF TRANSPORTATION

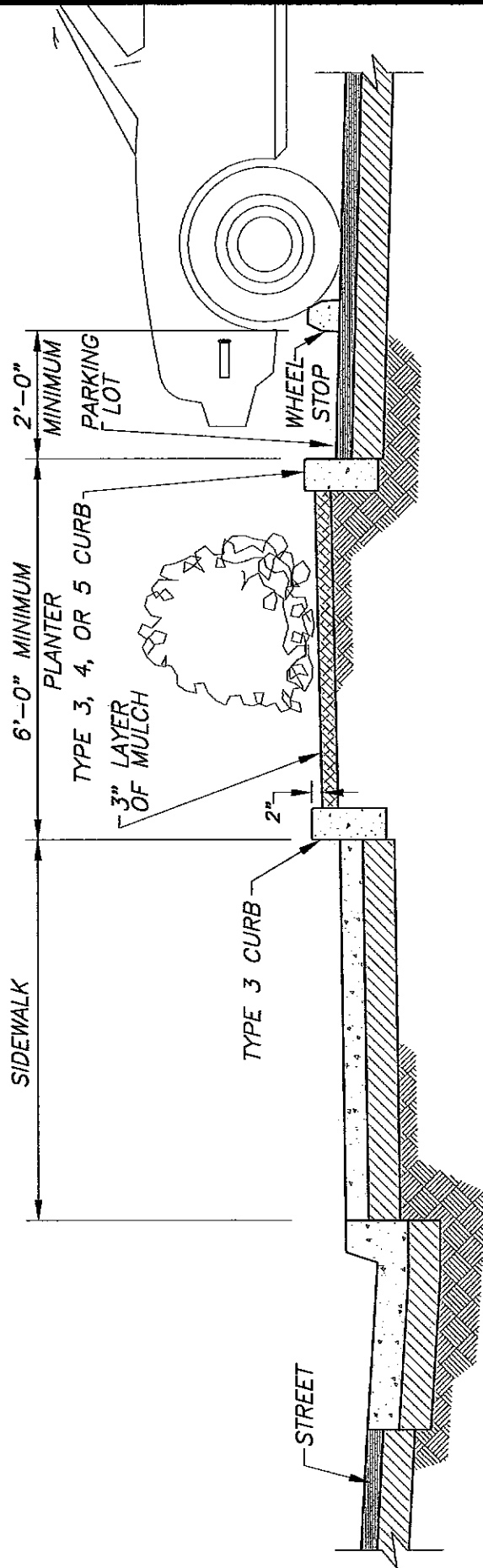
**COUNTY OF SACRAMENTO  
 MUNICIPAL SERVICES AGENCY**

**CROSS GUTTER**

NOTE:

6" MIN AGGREGATE BASE TO BE PLACED WITHIN LIMITS OF CROSS GUTTER.

SCALE: NONE  
 DATE: 03/05  
 DRAWN BY: TRU P.



NOTES:

1. USE BARRIER CURB ADJACENT TO SIDEWALK ON ALL 84', 108' AND 130' STREET WIDTHS AND ON ALL COMMERCIAL DEVELOPMENT.
2. SEE SECTION 4-20 OF COUNTY IMPROVEMENT STANDARDS FOR REQUIREMENTS.
3. TYPE 3 CURB AT THE BACK OF SIDEWALK MAY BE OMITTED IF LAWN IS PLANTED TO THE BACK OF SIDEWALK.

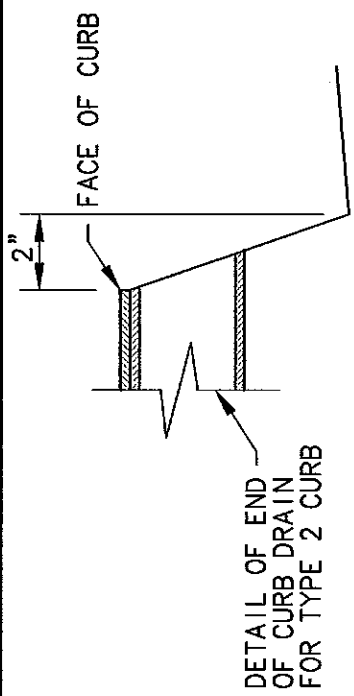
COUNTY OF SACRAMENTO  
MUNICIPAL SERVICES AGENCY

BARRIER CURB DETAIL

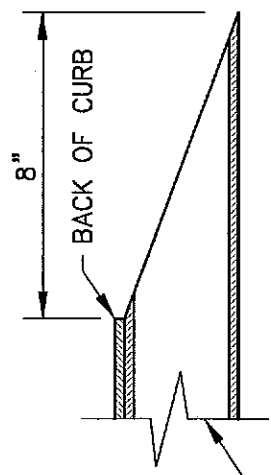
SCALE: NONE  
DATE: 03/05  
DRAWN BY: TRU P.

4-27

*[Signature]*  
CHIEF, DEPT. OF TRANSPORTATION

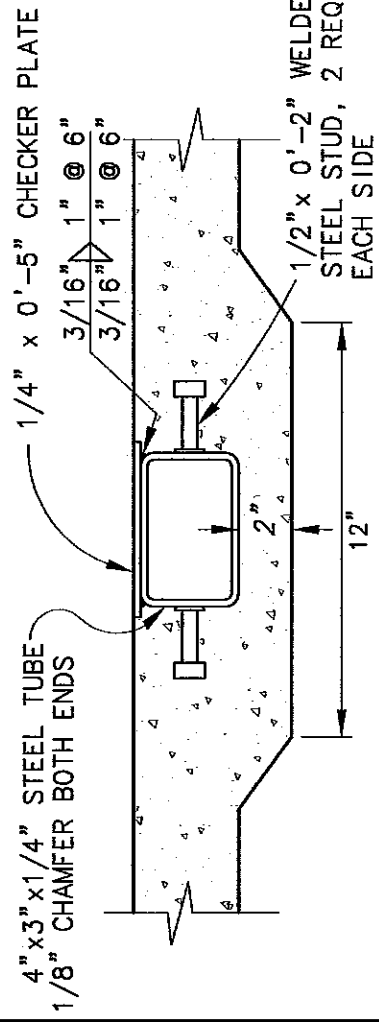


DETAIL OF END OF CURB DRAIN FOR TYPE 2 CURB

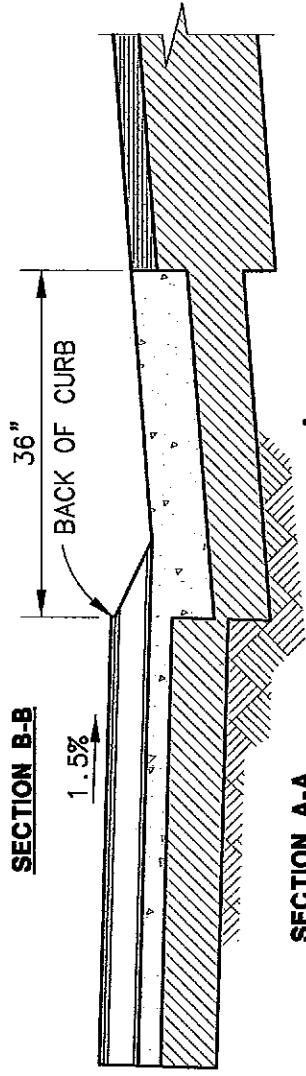


DETAIL OF CURB END OF DRAIN FOR TYPE 1A CURB

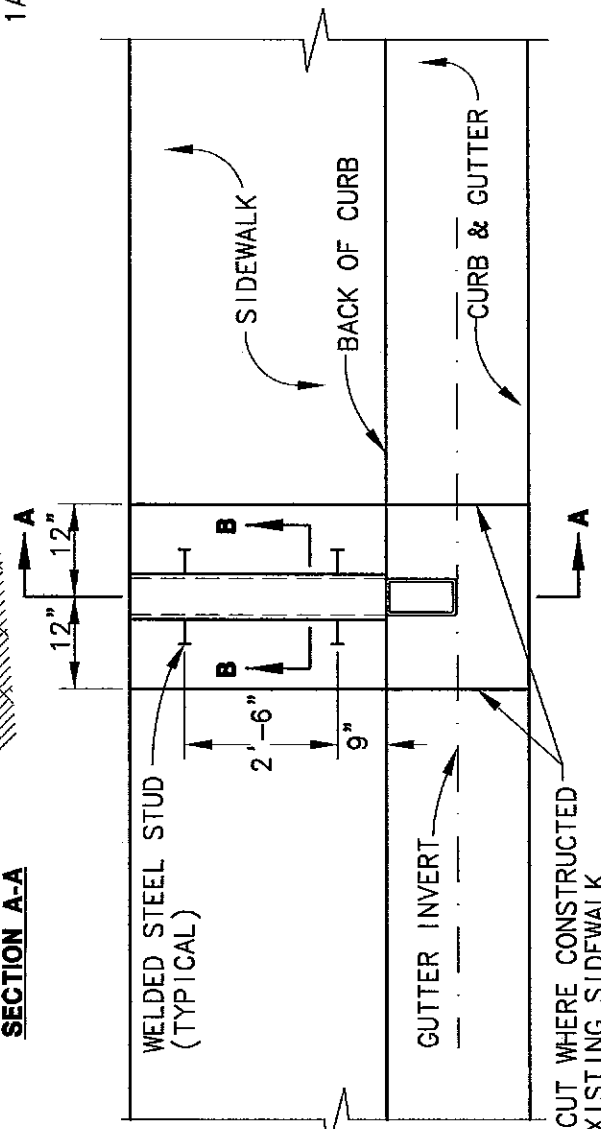
NOTE:  
GALVANIZE AFTER FABRICATION



SECTION B-B



SECTION A-A



SAW CUT WHERE CONSTRUCTED IN EXISTING SIDEWALK

*[Signature]*  
CHIEF, DEPT. OF TRANSPORTATION

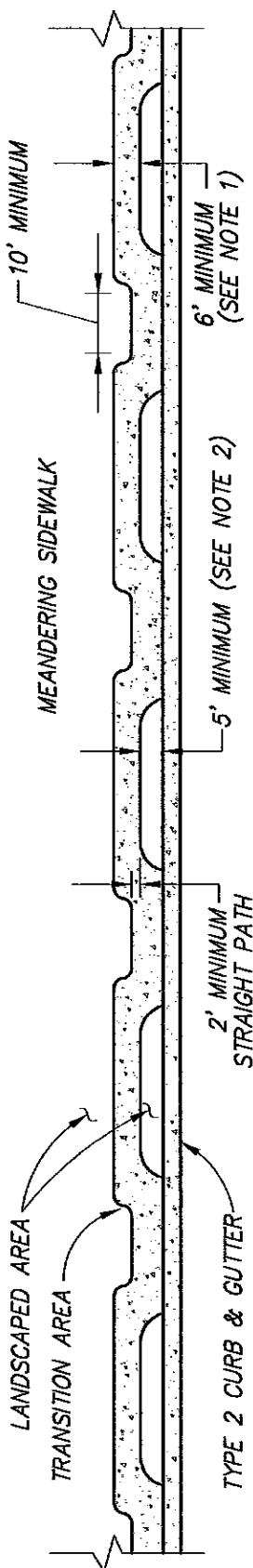
COUNTY OF SACRAMENTO  
MUNICIPAL SERVICES AGENCY

UNDER  
SIDEWALK DRAIN

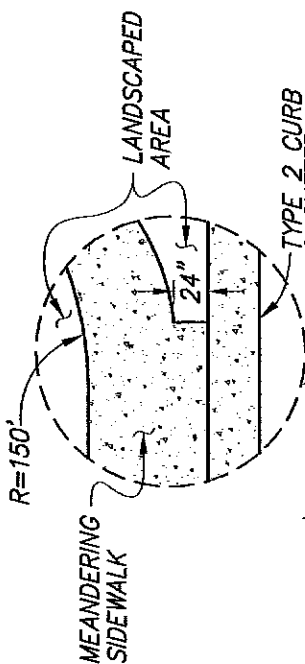
SCALE: NONE  
DATE: 03/05  
DRAWN BY: TRU P.

4-28

PLAN VIEW OF CURB, GUTTER & SIDEWALK



**CASE I**



**CASE II**

NOTE:

1. 6' MINIMUM SIDEWALK WIDTH REQUIRED ON THOROUGHFARES, ARTERIALS, AND WHERE 6' SIDEWALKS ARE REQUIRED BY THE IMPROVEMENT STANDARDS. 4' MINIMUM ON ALL OTHER LOCATIONS EXCEPT AT SCHOOLS WHERE 8' SIDEWALKS ARE REQUIRED.
2. 8' MINIMUM IF TREES WILL BE PLANTED BETWEEN THE SIDEWALK AND THE CURB & GUTTER.
3. CROSS SLOPE OF MEANDERING SIDEWALK TO BE 1.5% (1.0% TO 2.0% ALLOWABLE). LONGITUDINAL GRADE NOT TO EXCEED 5%.
4. USE OF MEANDERING SIDEWALKS WILL REQUIRE STREET LIGHTING REVIEW IN RELATION TO THE LANDSCAPE PLAN, AND MAY REQUIRE ADDITIONAL SIDEWALK LIGHTING.

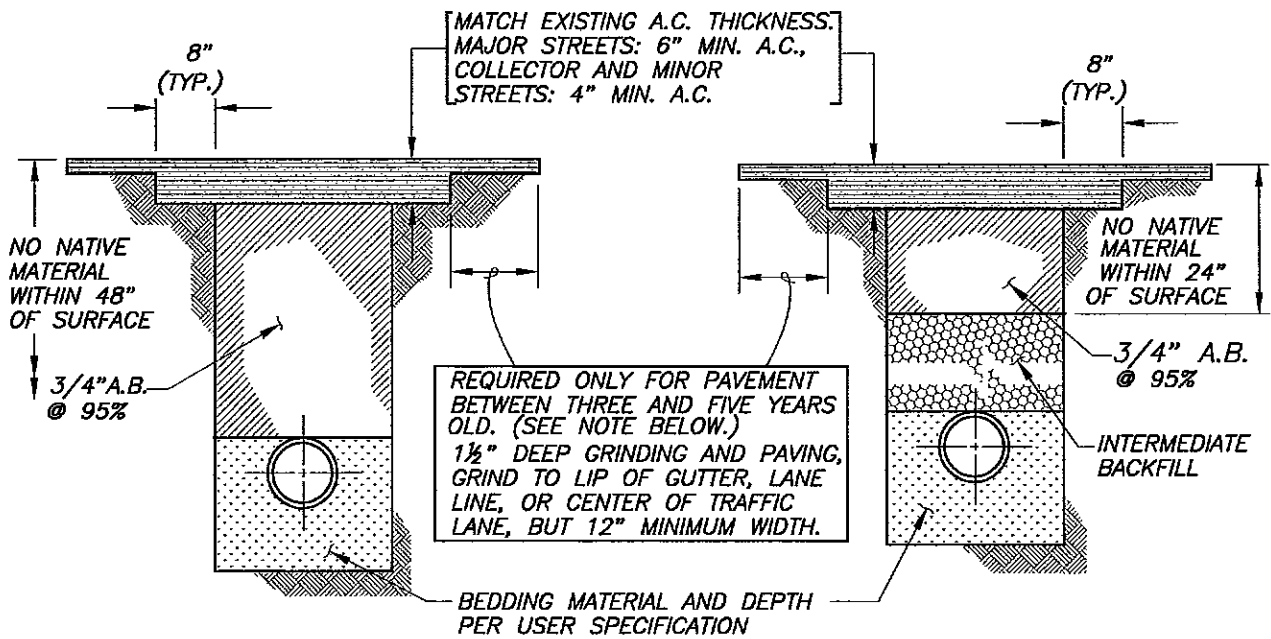
*[Signature]*  
 CHIEF, DEPT. OF TRANSPORTATION

**COUNTY OF SACRAMENTO  
 MUNICIPAL SERVICES AGENCY**

**MEANDERING SIDEWALK  
 STANDARDS**

SCALE: NONE  
 DATE: 03/05  
 DRAWN BY: TRU P.



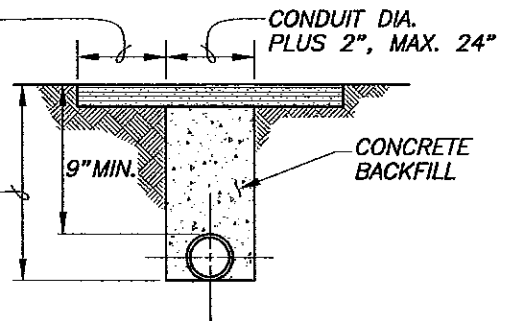


**SHALLOW TRENCH**  
IN EXISTING PAVEMENT  
(LESS THAN 4 FEET COVER)

REQUIRED ONLY FOR PAVEMENT BETWEEN THREE AND FIVE YEARS OLD. (SEE NOTE BELOW.)  
1 1/2" DEEP GRINDING AND PAVING. GRIND TO LIP OF GUTTER IF CENTER OF TRENCH IS WITHIN 20" OF LIP OF GUTTER, OTHERWISE 6" MINIMUM.

MAXIMUM DEPTH 15" OR ROADWAY STRUCTURAL SECTION LESS 2", WHICHEVER IS GREATER

**DEEP TRENCH**  
IN EXISTING PAVED AREAS  
AND OTHER TRENCHING  
(4 FEET OR MORE COVER)

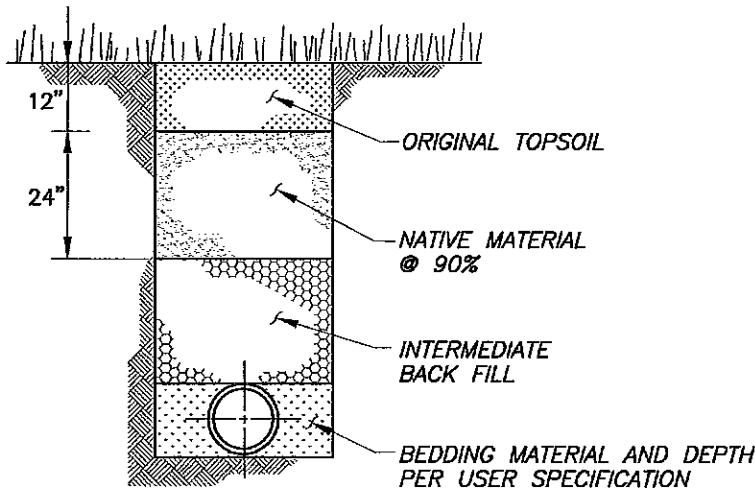


**EARTH SAW TRENCH SECTION**

(SEE SECTION 49-2.02)

**NOTE:**

NO PAVEMENT CUTS OR TRENCHES ARE ALLOWED IN PAVEMENT LESS THAN THREE YEARS OLD.



**HORTICULTURE, LAWN, OR CULTIVATED AREAS**

*[Signature]*  
CHIEF, DEPT. OF TRANSPORTATION

**COUNTY OF SACRAMENTO  
MUNICIPAL SERVICES AGENCY**

**TRENCH SECTIONS  
IN IMPROVED AREAS**

SCALE: NONE  
DATE: 03/05  
DRAWN BY: TRU P.

1' MINIMUM WIDTH,  
1-1/2" DEEP  
GRINDING AND PAVING.

2' MIN.

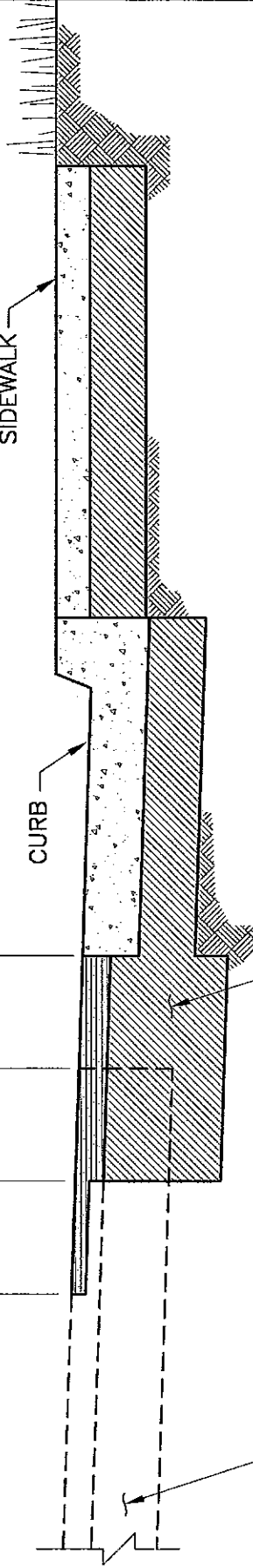
SAW CUT AND REMOVE A MINIMUM OF 1' OF  
PAVEMENT. REQUIRED ALONG ROADWAYS  
WITHOUT EXISTING P.C.C. GUTTER.

SIDEWALK

CURB

EXISTING PAVEMENT SECTION

NEW/PROPOSED PAVEMENT SECTION



NOTE:

THIS DETAIL IS APPLICABLE TO PAVEMENT WIDENING PROJECTS AND TO  
PAVEMENT EXTENSION PROJECTS (WHERE NEW ROAD CONNECTS TO EXISTING PAVEMENT).

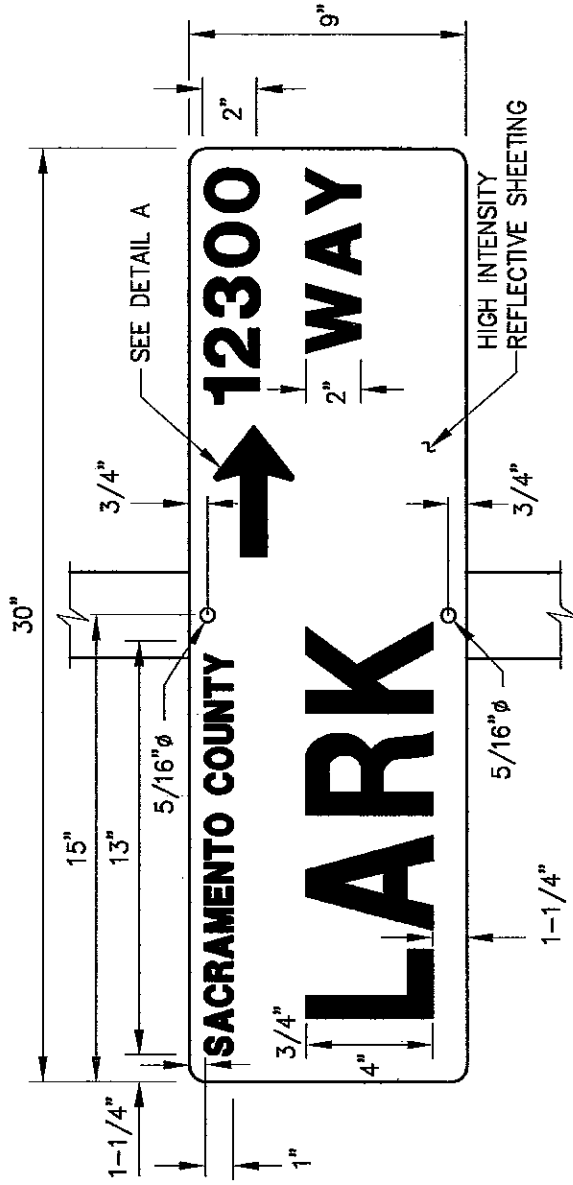
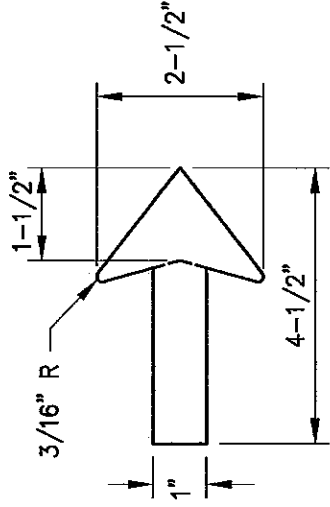
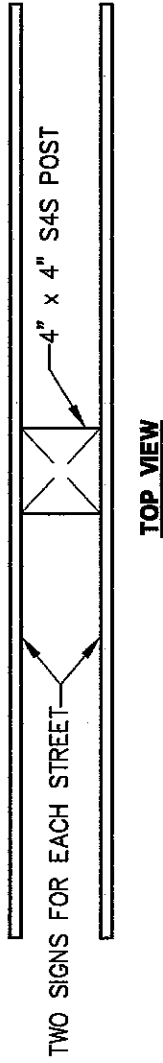
COUNTY OF SACRAMENTO  
MUNICIPAL SERVICES AGENCY

PAVEMENT WIDENING  
DETAIL

SCALE: NONE  
DATE: 03/05  
DRAWN BY: TRU P.

4-32

  
CHIEF, DEPT OF TRANSPORTATION



SIGN DETAILS FOR SINGLE STREET

NOTES:

1. ALUMINUM SHEET ALLOY 6061-T6 0.080" GAUGE ROUNDED CORNERS 1/4" RADIUS.
2. FOR TWO (2) STREETS, PLACE SECOND PAIR OF SIGNS AND AT 90° TO SIGNS AS SHOWN.
3. POSTS SHALL BE REDWOOD OR TREATED DOUGLAS FIR (STATE OF CALIFORNIA SPEC. NO. 56-2.02B).
4. BLOCK NUMBERS SHALL BE AS SHOWN ON THE PLAN IN 2" SERIES "C".

CHIEF, DEPT. OF TRANSPORTATION

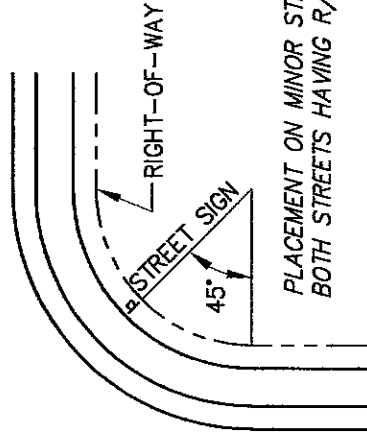
COUNTY OF SACRAMENTO  
MUNICIPAL SERVICES AGENCY

STREET SIGN  
FULLY REFLECTORIZED

SCALE: NONE  
DATE: 03/05  
DRAWN BY: TRU P.

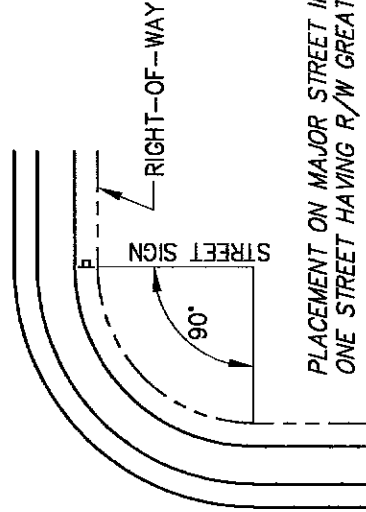
4-33

STREET W/ LESS THAN 80' R/W WIDTH

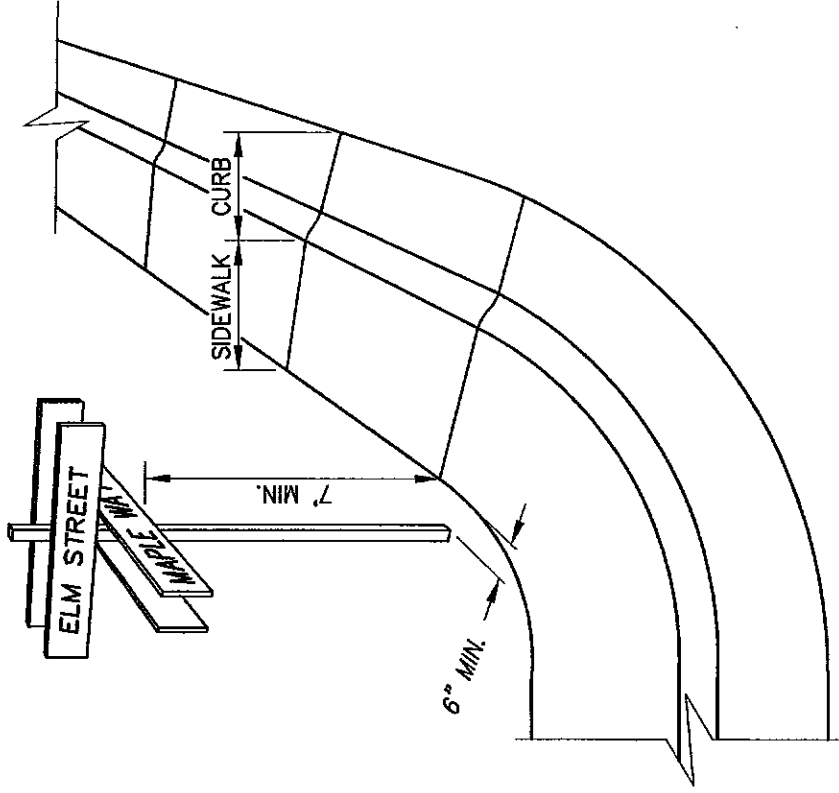


PLACEMENT ON MINOR STREET INTERSECTIONS WITH BOTH STREETS HAVING R/W LESS THAN 80'.

MAJOR STREET 80' OR GREATER R/W WIDTH



PLACEMENT ON MAJOR STREET INTERSECTIONS WITH AT LEAST ONE STREET HAVING R/W GREATER THAN 80'.



NOTE: IN LIEU OF INSTALLATION OF STREET NAME SIGNS ON NEW POST, SIGNS MAY BE INSTALLED ON STREET LIGHT POLES PER DWG. 4-35

COUNTY OF SACRAMENTO  
MUNICIPAL SERVICES AGENCY

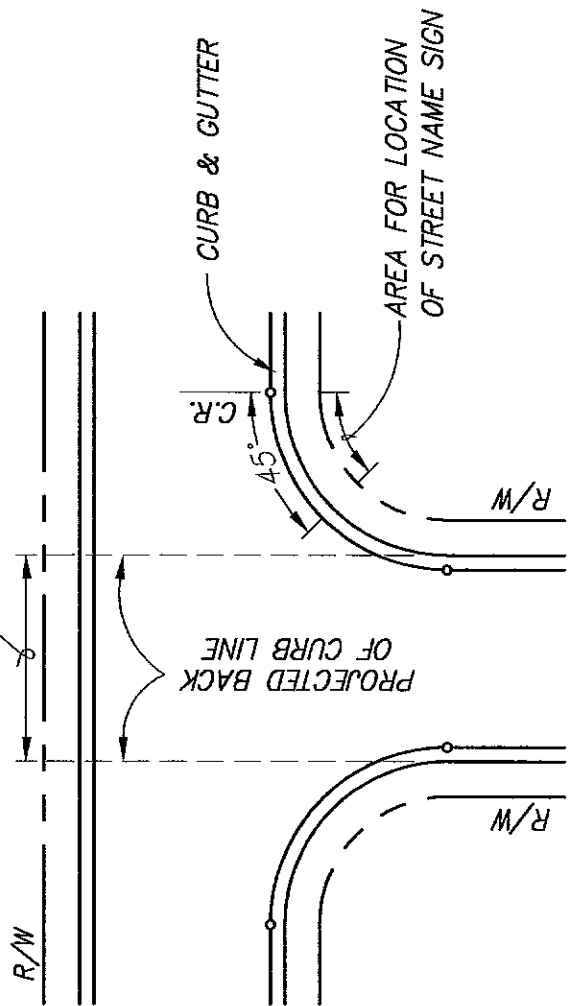
STREET NAME SIGN  
PLACEMENT DETAILS

SCALE: NONE  
DATE: 03/05  
DRAWN BY: TRU P.

4-34

*[Signature]*  
CHIEF, DEPT. OF TRANSPORTATION

AREA FOR LOCATION OF SECOND SIGN  
IF REQUIRED BY STANDARD DWG. 4-37.



NOTES:

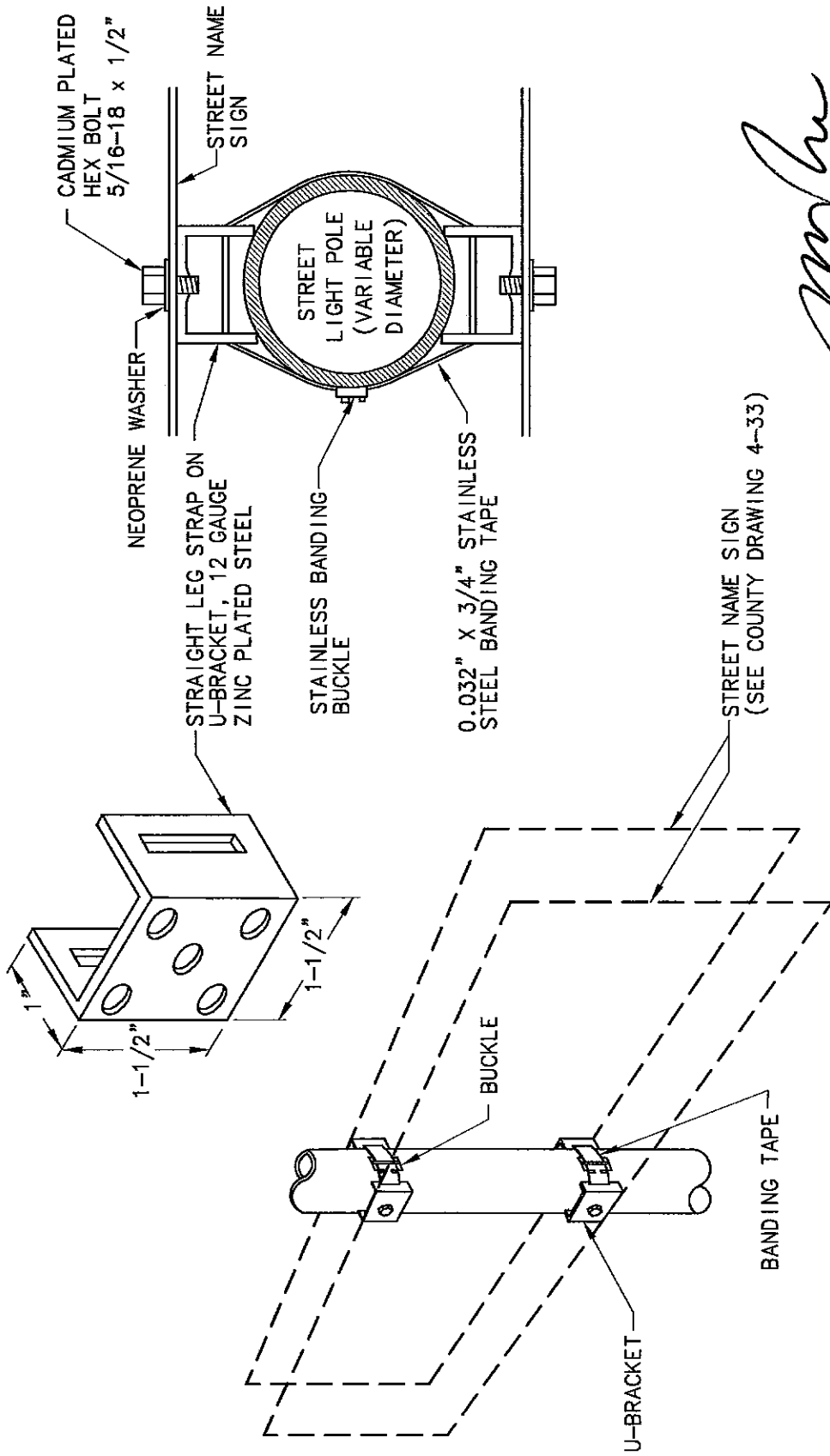
1. STREET NAME SIGNS SHALL BE INSTALLED ON STREET LIGHT POLES WHEN THEY ARE LOCATED WITHIN THE LOCATION LIMITS DEFINED ON THIS DETAIL.
3. ALL OTHER STREET NAME SIGN REQUIREMENTS IN SECT'S 4-26 & 4-27 AND IN DRAWINGS 4-33, 4-34, 4-36 & 4-37 OF THE SACRAMENTO COUNTY IMPROVEMENT STANDARDS SHALL APPLY.

COUNTY OF SACRAMENTO  
MUNICIPAL SERVICES AGENCY

STREET NAME SIGN ON  
STREET LIGHT POLE  
PLACEMENT DETAIL

SCALE: NONE  
DATE: 03/05  
DRAWN BY: COUNTY D.O.T. **4-35**

*[Signature]*  
CHIEF, DEPT. OF TRANSPORTATION



*[Signature]*  
 CHIEF, DEPT. OF TRANSPORTATION

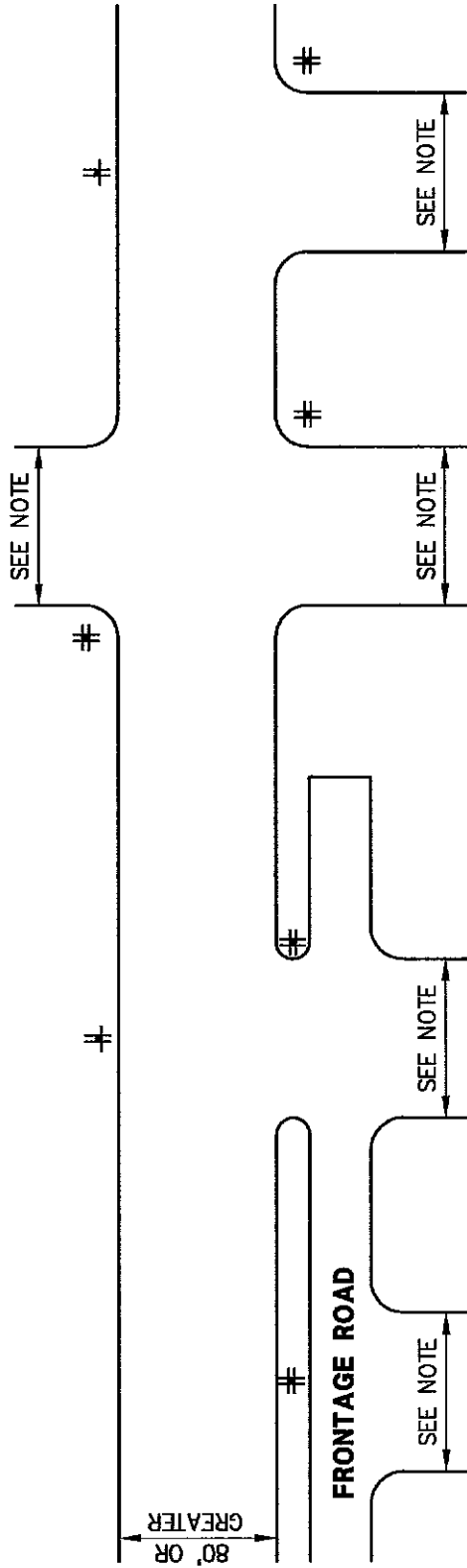
**COUNTY OF SACRAMENTO  
 MUNICIPAL SERVICES AGENCY**

**STREET NAME SIGN  
 INSTALLATION ON  
 STREET LIGHT POLE**

SCALE: NONE  
 DATE: 03/05  
 DRAWN BY: **4-36**

**NOTE:**  
 DETAIL SHOWN IS FOR A TWO SIGN INSTALLATION. FOUR SIGN INSTALLATIONS  
 MAY BE MADE, WHERE APPLICABLE, BY FASTENING A SECOND PAIR OF SIGNS  
 IN THE SAME MANNER.

STANDARD CLEARANCE TO BOTTOM OF LOWEST SIGN IS 7 FEET MINIMUM.

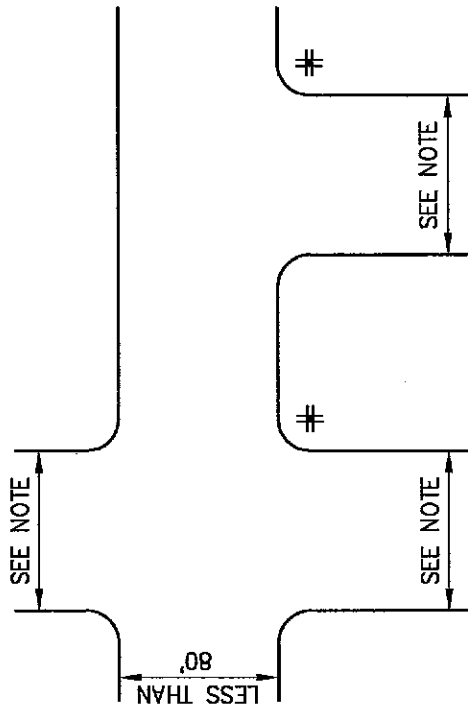


**STREETS HAVING 80' OR GREATER R/W WIDTH**

**NOTE:**  
SIDE STREETS INDICATED ARE  
STREETS WITH R/W WIDTHS EQUAL TO  
OR LESS THEN R/W WIDTH FOR  
THROUGH STREET AS SHOWN ON THE  
PLAN.

**LEGEND:**  
# STANDARD STREET NAME SIGN  
INSTALLATION, FOUR (4) SIGN  
PLATES ON 4" x 4" POST OR ON  
STREET LIGHT POLE.

+ THREE (3) SIGN PLATES ON 4" x 4"  
POST OR ON STREET LIGHT POLE.



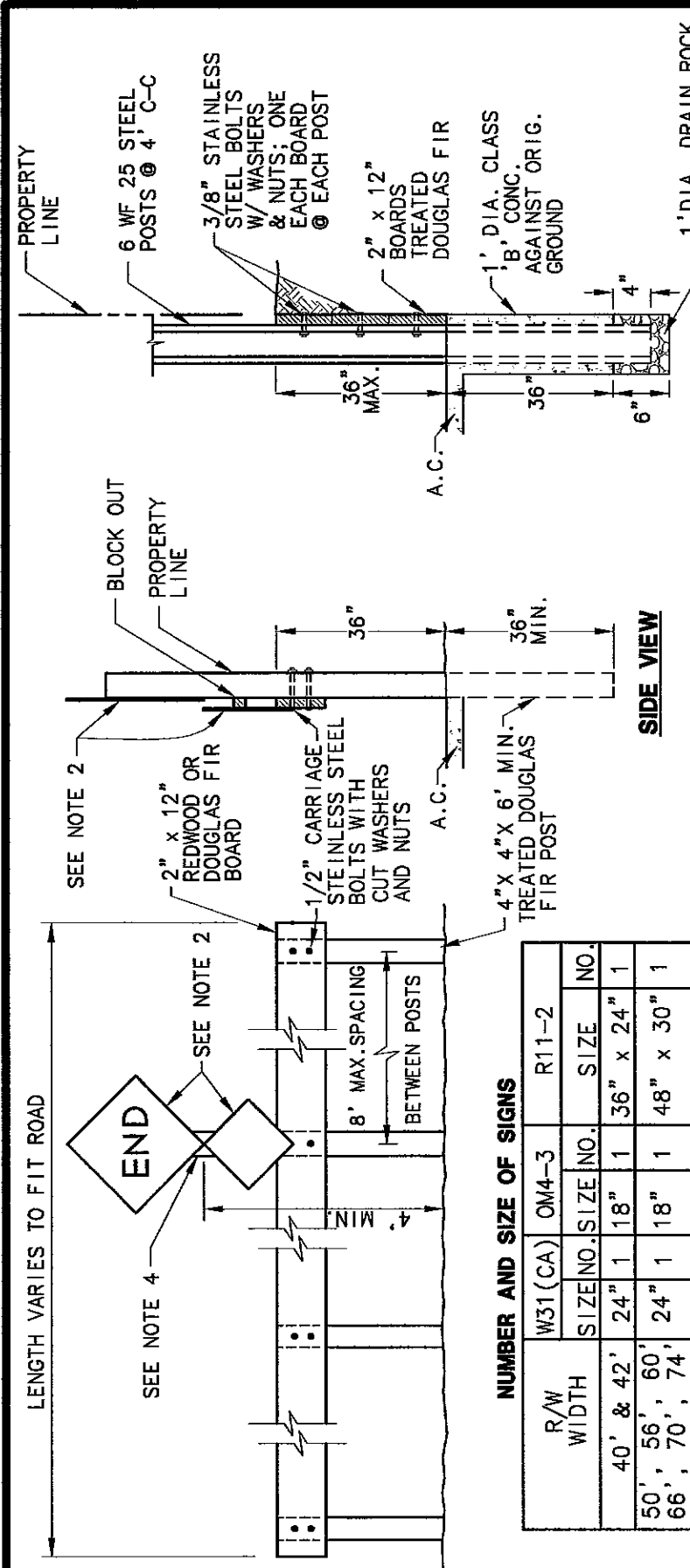
**STREETS HAVING LESS THAN 80' R/W WIDTH**

*[Signature]*  
CHIEF, DEPT. OF TRANSPORTATION

COUNTY OF SACRAMENTO  
MUNICIPAL SERVICES AGENCY

STREET NAME SIGN  
PLACEMENT DETAILS

SCALE: NONE  
DATE: 03/05  
DRAWN BY:



**STREET ENDING IN CUT WHERE SLOPE NOT OBTAINABLE**

**SIDE VIEW**

**NUMBER AND SIZE OF SIGNS**

R/W WIDTH	W31 (CA)		OM4-3		R11-2	
	SIZE	NO.	SIZE	NO.	SIZE	NO.
40' & 42'	24"	1	18"	1	36" x 24"	1
50', 56', 60', 66', 70', 74'	24"	1	18"	1	48" x 30"	1
80' & 84'	24"	2	18"	2	48" x 30"	1
108' & 130'	24"	3	18"	3	48" x 30"	1

**NOTES:**

- WHERE PERMISSION HAS BEEN GRANTED TO CLOSE AN EXISTING PUBLIC STREET, A R11-2 "ROAD CLOSED" SIGN WILL BE REQUIRED ON THE CENTERLINE OF THE ROAD IN ADDITION TO THE W31(CA) "END" SIGN.
- 24" x 24" W31(CA) SIGN AND 18" x 18" OM4-3 MARKER. BLOCK OUT AS NECESSARY FOR OM4-3 MARKER TOP MOUNTING BOLT (BOTTOM MOUNTING BOLT NORMALLY THROUGH BARRIER RAIL). OM4-3 MARKER TO HAVE SOLID RED REFLECTIVE BACKGROUND WITHOUT ADDED REFLECTORS.
- ALL EXPOSED SURFACES OF BARRICADE SHALL BE PAINTED WITH WHITE PAINT CONFORMING TO STATE STANDARD SPECIFICATION 91-3.
- POST AT CENTER OR NEAREST TO CENTER ON RIGHT HAND SIDE TO BE EXTENDED TO PROVIDE MOUNTING FOR SIGNS.
- POSTS SHALL BE PRESSURE TREATED PER STATE SPECIFICATION 58-1.02

**COUNTY OF SACRAMENTO  
MUNICIPAL SERVICES AGENCY**

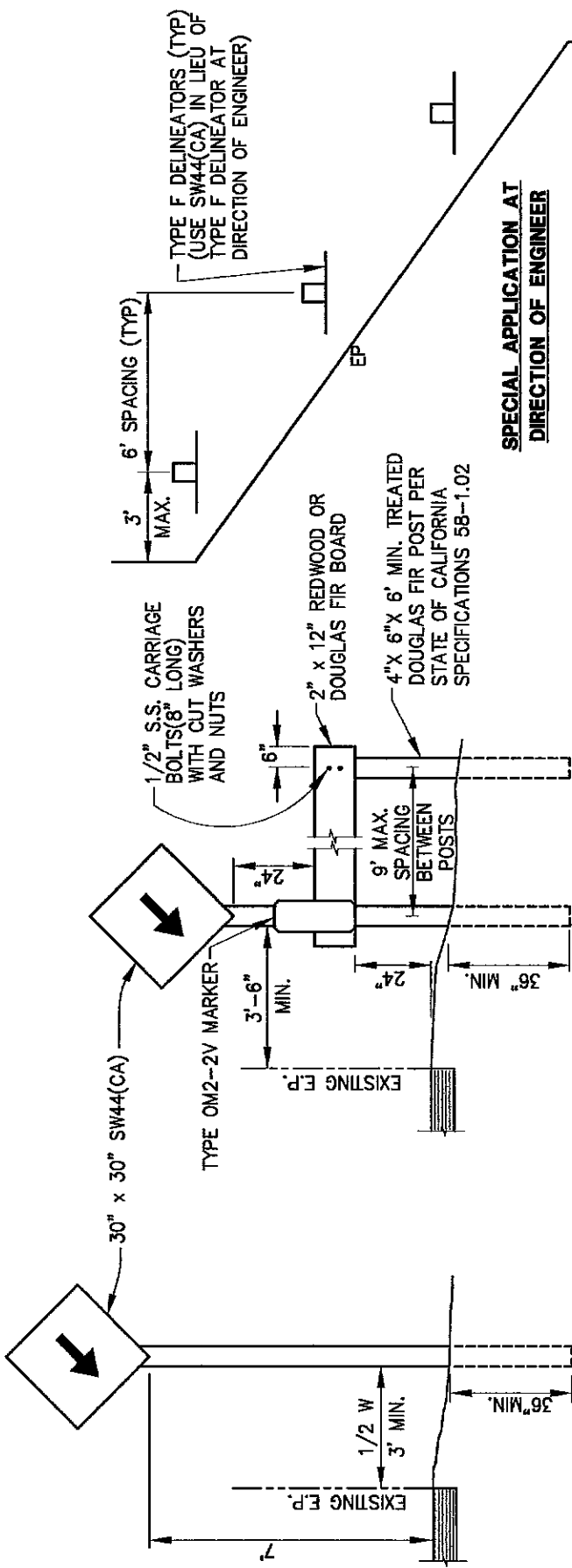
**STREET CLOSURE  
TIMBER BARRICADE**

SCALE: NONE  
DATE: 03/05  
DRAWN BY: TRU P.

**4-38**

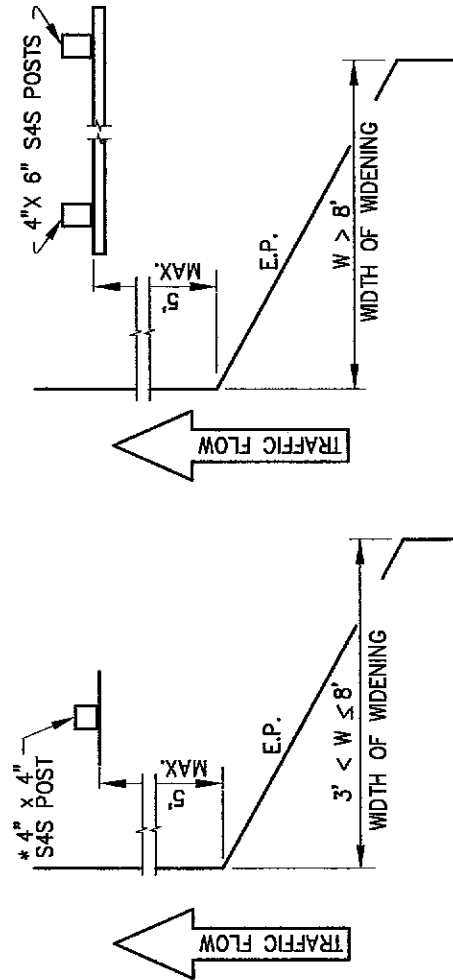
*[Signature]*  
CHIEF, DEPT. OF TRANSPORTATION





**SPECIAL APPLICATION AT DIRECTION OF ENGINEER**

**NOTE:**  
ALL EXPOSED SURFACES OF BARRICADE SHALL BE PAINTED WHITE IN CONFORMANCE WITH THE REQUIREMENTS OF SECTIONS 91-3 OF THE STATE STANDARD SPECIFICATIONS.

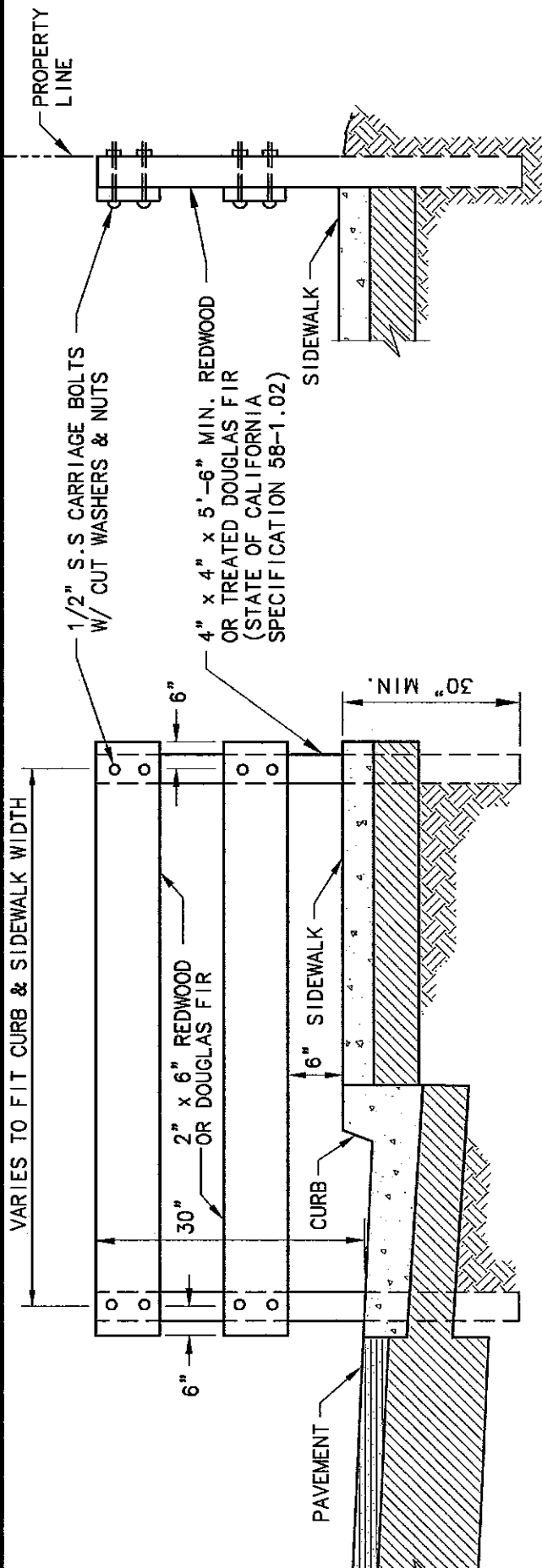


**COUNTY OF SACRAMENTO  
MUNICIPAL SERVICES AGENCY**

**SIGNS AND BARRICADES  
AT ABRUPT CHANGE  
OF PAVEMENT WIDTH**

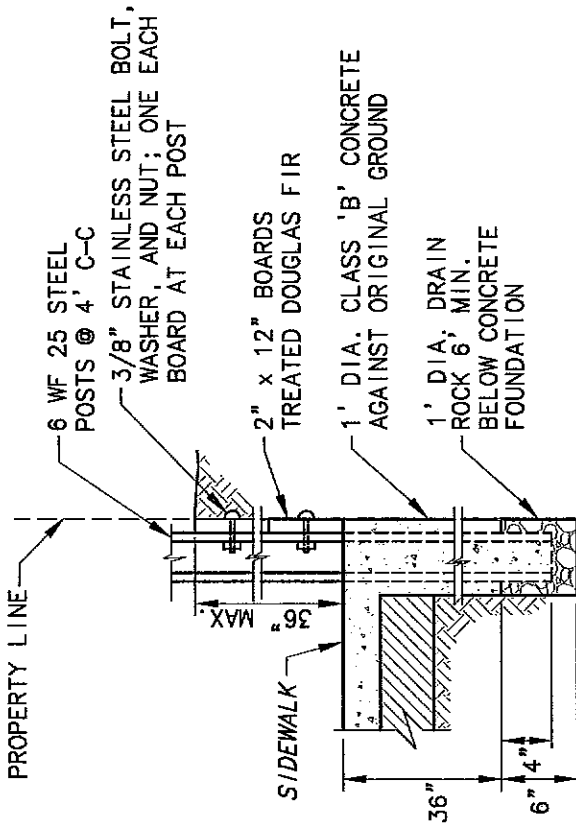
SCALE: NONE  
DATE: 03/05  
DRAWN BY: TRU P.

*Tru P.*  
CHIEF, DEPT. OF TRANSPORTATION



**NOTES:**

1. SIDEWALK BARRICADES TO BE ERECTED AT EACH LOCATION WHERE SATISFACTORY PROVISION CAN NOT BE MADE FOR PEDESTRIAN TO CONTINUE BEYOND THE TERMINUS OF A SIDEWALK AND A HAZARD IS PRESENT.
2. ALL EXPOSED SURFACES TO BE PAINTED WITH TWO (2) COATS OF WHITE PAINT CONFORMING TO SECTION 91-3 OF STATE SPECIFICATIONS.



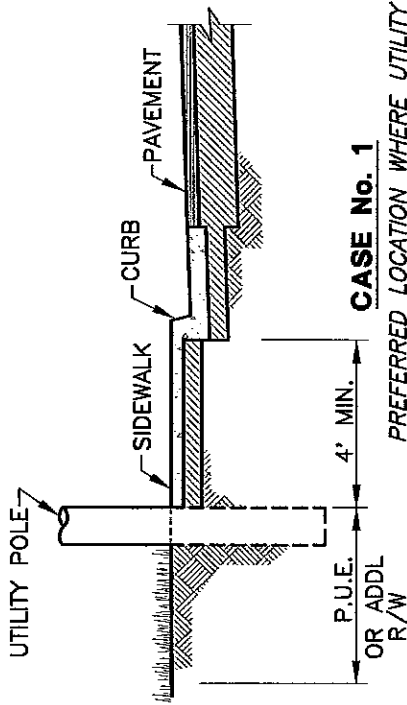
**DETAIL FOR SIDEWALK BARRICADE WITH RETAINING WALL**

*[Signature]*  
 CHIEF, DEPT. OF TRANSPORTATION

**COUNTY OF SACRAMENTO  
 MUNICIPAL SERVICES AGENCY**

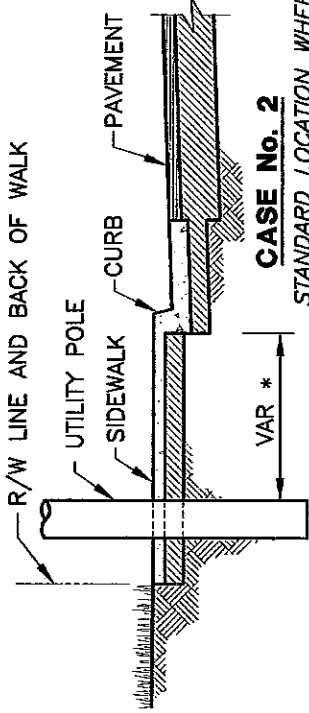
**SIDEWALK BARRICADE**

SCALE: NONE  
 DATE: 03/05  
 DRAWN BY: TRU P. **4-40**



**CASE No. 1**

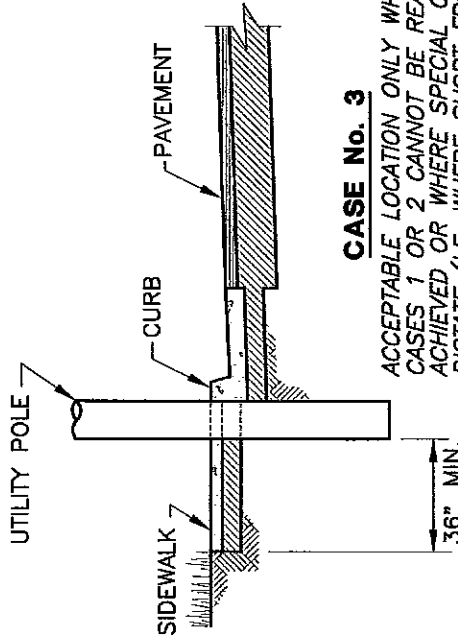
PREFERRED LOCATION WHERE UTILITY CONFLICTS AND PHYSICAL CONDITIONS ALLOW AND AN EASEMENT OR RIGHT OF WAY EXISTS BEHIND WALK.



**CASE No. 2**

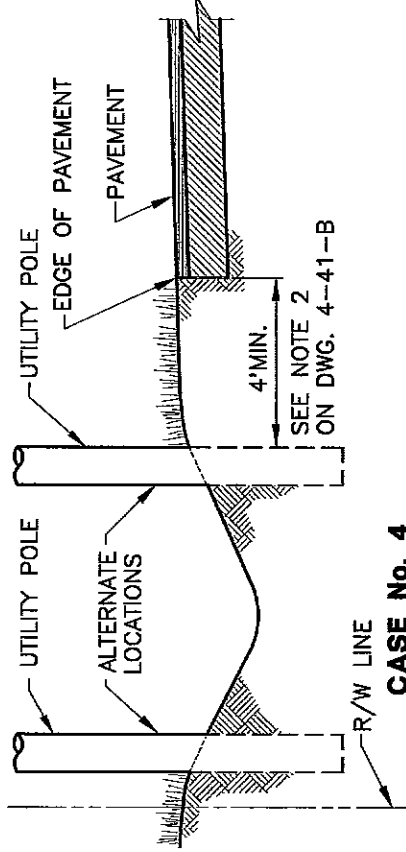
STANDARD LOCATION WHERE CASE #1 IS NOT REASONABLY ACHIEVABLE

\* PEDESTRIAN CLEARANCE OF 36" MINIMUM IN FRONT OF THE POLE IS DESIRABLE. POLE CAN BE PLACED 12" MINIMUM FROM BACK OF CURB IF 36" MINIMUM PEDESTRIAN CLEARANCE IS PROVIDED BEHIND POLE. POLE TO BE PLACED WITH BACK OF POLE FLUSH WITH BACK OF WALK IF NOT IN CONFLICT WITH OTHER UTILITIES.



**CASE No. 3**

ACCEPTABLE LOCATION ONLY WHERE CASES 1 OR 2 CANNOT BE REASONABLY ACHIEVED OR WHERE SPECIAL CONDITIONS DICTATE (I.E. WHERE SHORT FRONTAGE IMPROVEMENT CAUSES SIGNIFICANT DEVIATION FROM POLE LINE RESULTING IN UNDESIRABLE GUYING REQUIREMENTS.



**CASE No. 4**

REFER TO NOTE 1 ON DWG. 4-41-B

**COUNTY OF SACRAMENTO  
MUNICIPAL SERVICES AGENCY**

**UTILITY POLE  
PLACEMENT LOCATIONS**

SCALE: NONE  
DATE: 03/05  
DRAWN BY: TRU P.

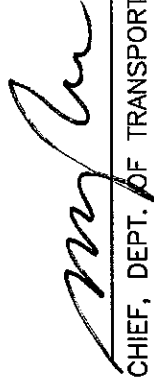
**4-41-A**

**SEE 4-41-B FOR NOTES**

*[Signature]*  
CHIEF, DEPT. OF TRANSPORTATION

NOTES:

1. WHERE STREET IMPROVEMENTS WILL ULTIMATELY BE CLASS A OR B, THE POLE SHOULD BE LOCATED IN CONFORMANCE TO THE APPROPRIATE CASE #1 OR #2 BASED ON THE FUTURE LOCATION OF THE STREET IMPROVEMENTS. IN THE CASE WHERE NO CURBS WOULD EVER BE ANTICIPATED, THE POLE SHOULD BE LOCATED 4 FEET MINIMUM FROM THE EDGE OF PAVEMENT SO AS NOT TO ENCROACH IN AN ADJACENT DITCH AS SHOWN IN CASE #4.
2. WITH ROAD WIDENING PROJECTS, UTILITY POLES MAY BE ALLOWED TO REMAIN AT THE EDGE OF PAVEMENT, WITH 0.5 FEET MINIMUM CLEARANCE (CASE #4). HOWEVER, WHERE THE PRE-PROJECT UTILITY POLE LOCATION IS WITHIN THE PROPOSED PAVEMENT SECTION, UTILITY POLES SHOULD BE RELOCATED TO THE ULTIMATE LOCATION PER CASE #1 OR #2, IN ORDER TO AVOID RELOCATION OF THE UTILITY POLE IN THE FUTURE.
3. UTILITY POLE PLACEMENT UNDER THE FOLLOWING CONDITIONS IS SUBJECT TO APPROVAL BY THE CHIEF OF THE DEPARTMENT OF TRANSPORTATION:
  - A- POLES IN VISIBILITY CONTROL AREAS (SEE STANDARD DRAWING 4-20).
  - B- POLES LARGER THAN 18 INCHES IN DIAMETER WITHIN 9 FEET OF EDGE OF PAVEMENT IN CLASS A OR CLASS B STREETS.
  - C- POLES LARGER THAN 18 INCHES IN DIAMETER WITHIN 9 FEET OF THE EDGE OF TRAVELED WAY ON CLASS C STREETS.
  - D- POLES LOCATED ON THE OUTSIDE OF SHARP CURVES, OR IN THE TANGENT OF THE CURVES WITHIN 200 FEET OF THE BEGINNING OR END OF CURVE (FOR 45 MPH OR GREATER SPEED LIMIT) OR 100 FEET (FOR A LESSER SPEED LIMIT). IN THESE CASES, SPECIAL DELINEATION AND/OR A GUARDRAIL MAY BE REQUIRED. FOR PURPOSES OF THIS SECTION, SHARP CURVES SHALL BE CONSIDERED THOSE WITH RADII OF LESS THAN 800 FEET FOR URBAN 2 LANE STREETS, AND WITH RADII OF LESS THAN 2000 FEET FOR RURAL ROADS OR MULTI-LANE STREETS.
4. RISERS PROPOSED IN A LOCATION THAT WOULD REDUCE PEDESTRIAN CLEARANCE TO LESS THAN 36 INCHES SHALL NOT BE ALLOWED.



CHIEF, DEPT. OF TRANSPORTATION

**COUNTY OF SACRAMENTO  
MUNICIPAL SERVICES AGENCY**

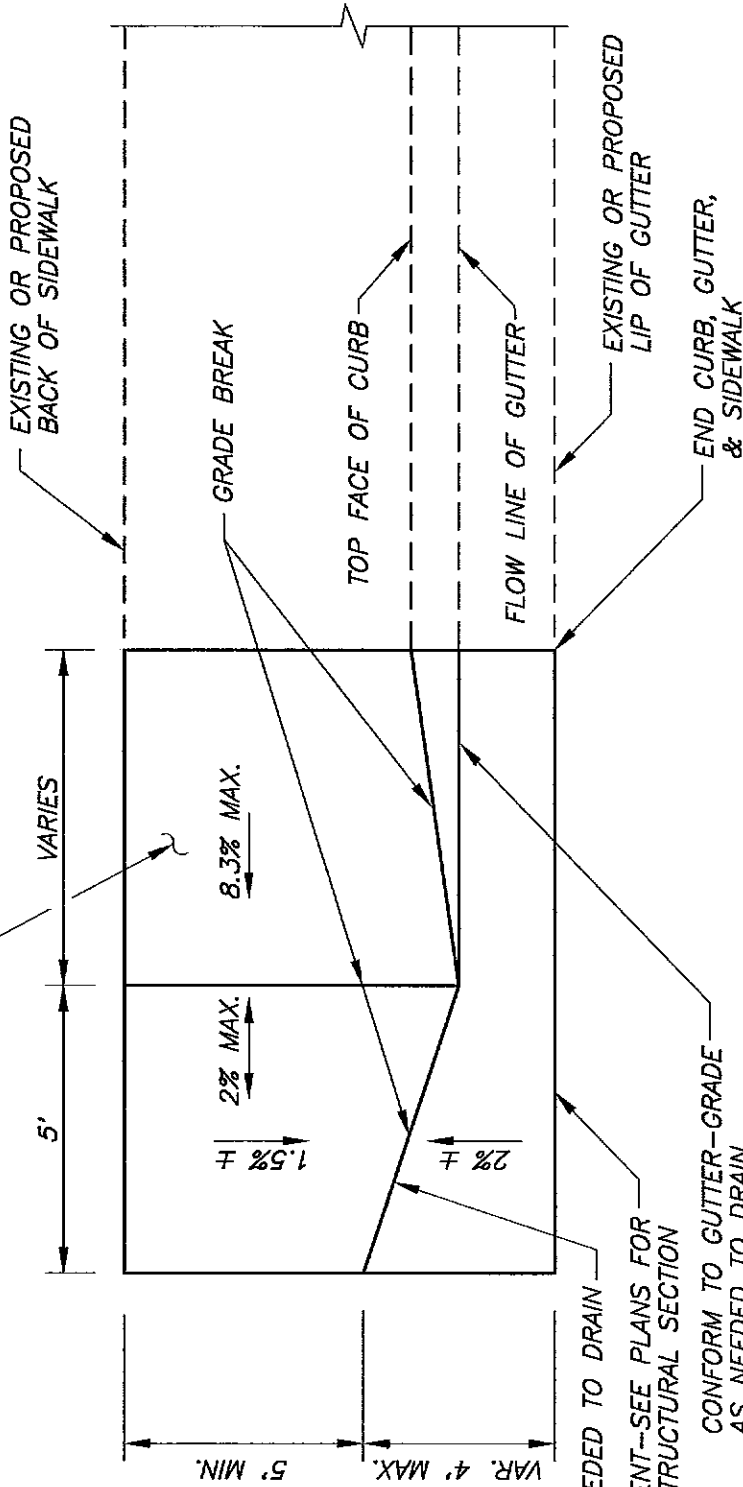
**SEE 4-41-A FOR DETAILS**

**UTILITY POLE  
PLACEMENT LOCATIONS**

SCALE: NONE  
DATE: 03/05  
DRAWN BY: TRU P.

**4-41-B**

4" A.C. SIDEWALK CONFORM



CONFORM AS NEEDED TO DRAIN  
 EDGE OF PAVEMENT--SEE PLANS FOR  
 LOCATION AND STRUCTURAL SECTION  
 CONFORM TO GUTTER-GRADE  
 AS NEEDED TO DRAIN

NOTE: A SIDEWALK BARRICADE SHALL BE REQUIRED IF THE  
 END OF THE A.C. SIDEWALK CONFORM ABUTS A  
 DRAINAGE DITCH OR ANY OTHER SURFACE THAT WOULD  
 POSE A HAZARD TO PEDESTRIANS.

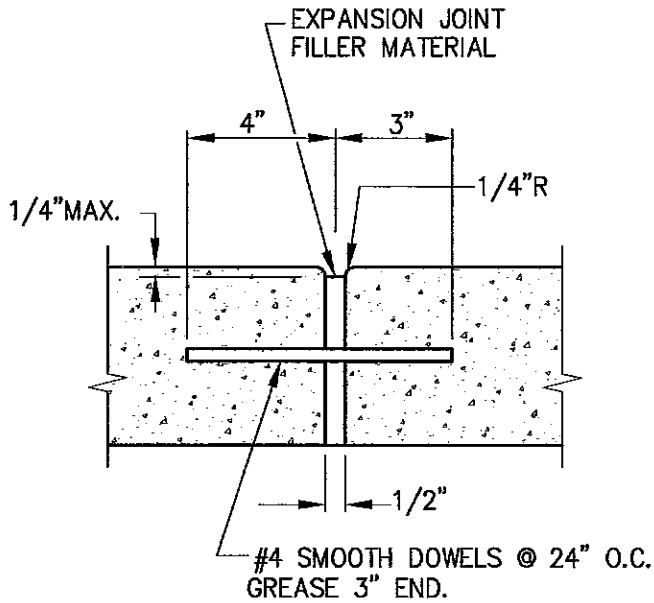
COUNTY OF SACRAMENTO  
 MUNICIPAL SERVICES AGENCY

A.C. SIDEWALK CONFORM

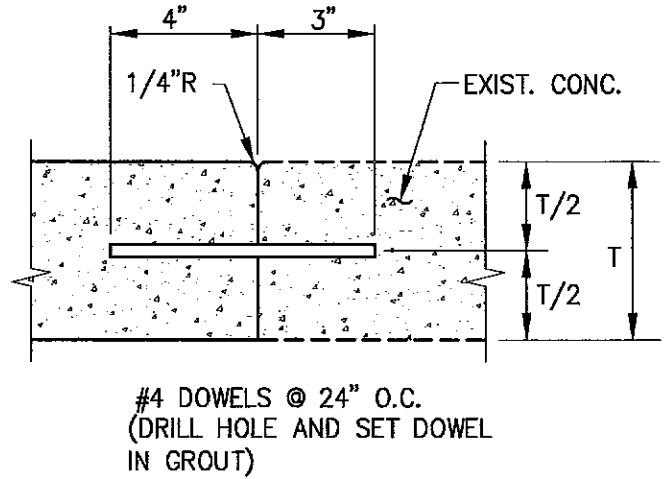
SCALE: NONE  
 DATE: 03/05  
 DRAWN BY: TRU P.

4-42

*[Signature]*  
 CHIEF, DEPT. OF TRANSPORTATION

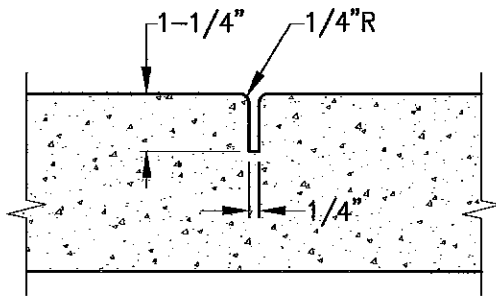


**EXPANSION JOINT**

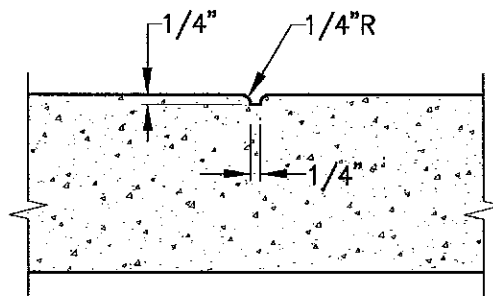


**SIDEWALK CONTACT JOINT**

USE WHERE NEW CONSTRUCTION OF SIDEWALK, RAMP AND/OR CURB & GUTTER ABUTTS EXISTING IMPROVEMENTS.



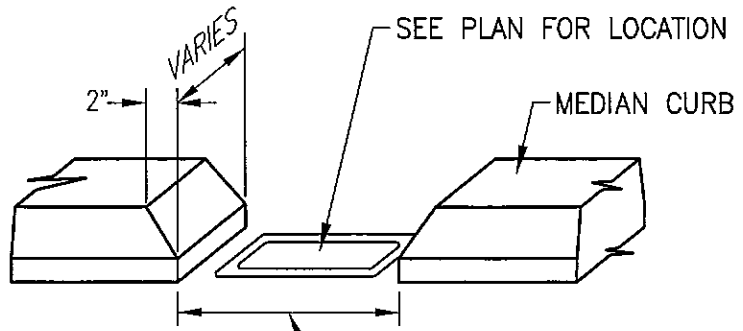
**WEAKENED PLANE JOINT**



**SCORE MARK**

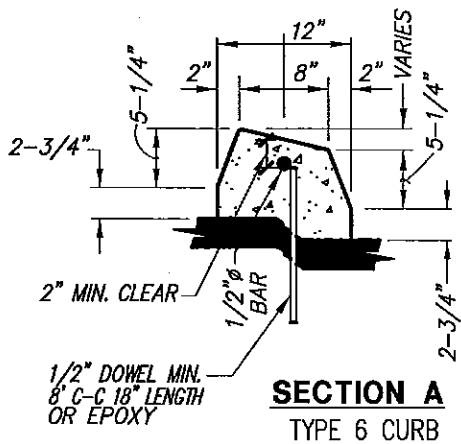
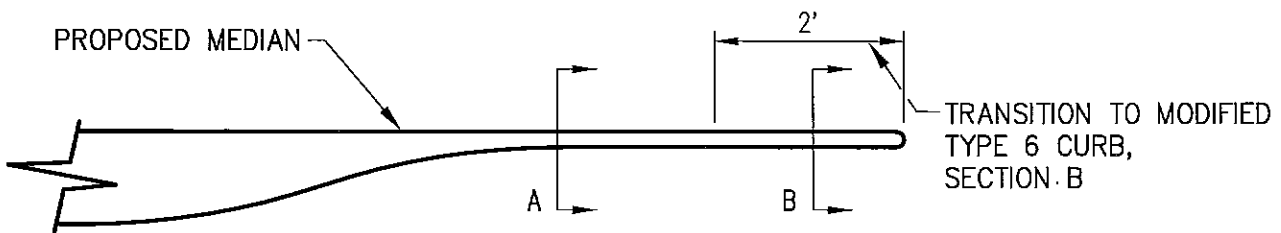
  
CHIEF, DEPT. OF TRANSPORTATION

<b>COUNTY OF SACRAMENTO MUNICIPAL SERVICES AGENCY</b>	
<b>STANDARD CONCRETE JOINT DETAILS</b>	
SCALE: NONE DATE: 03/05 DRAWN BY: TRU P.	<b>4-43</b>

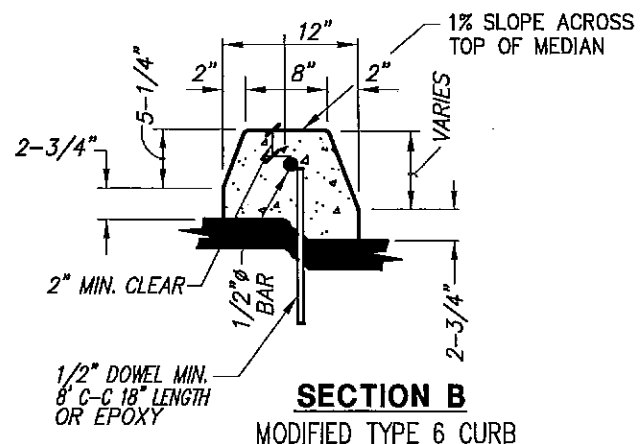


OPENING TYPE	OPENING WIDTH
DRAINAGE	1'-0"
PULL BOX - #3-1/2 OR #3-1/2(T)	2'-0"
PULL BOX - #5 OR #5(T)	3'-0"
PULL BOX - #6 OR #6(T)	3'-6"

**OPENING IN MEDIAN TO PLACE PULL BOX AT GRADE**



**SECTION A**  
TYPE 6 CURB



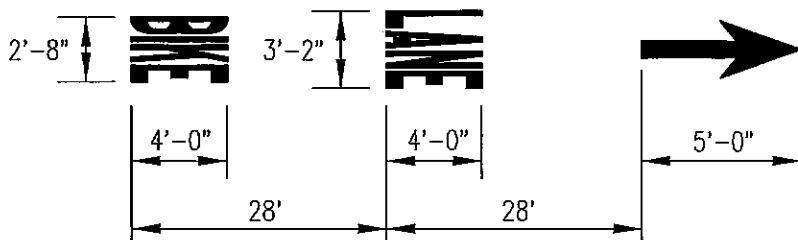
**SECTION B**  
MODIFIED TYPE 6 CURB  
FOR TERMINATION OF MEDIAN

**MEDIAN NOSE TRANSITION**

- NOTES:**
1. SEE PLAN FOR EXACT LOCATION OF OPENING.
  2. SEE STANDARD DRAWING 4-25 FOR CURB DETAILS.

CHIEF, DEPT. OF TRANSPORTATION

<b>COUNTY OF SACRAMENTO MUNICIPAL SERVICES AGENCY</b>	
<b>MEDIAN DETAIL</b>	
SCALE: NONE DATE: 06/07 DRAWN BY: N.S.	<b>4-44</b>



**BIKE LANE LEGEND DETAIL**

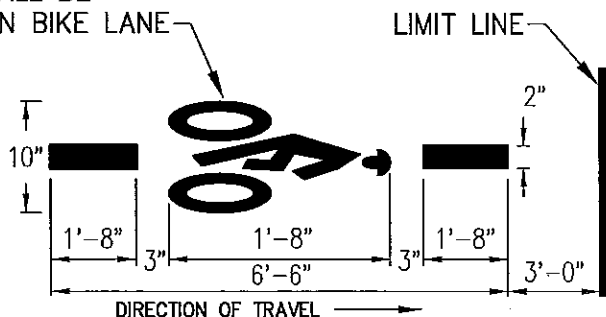
SEE CALTRANS STANDARD PLAN A24A AND A24D FOR PAVEMENT MARKING WORDS AND ARROW.

**BIKE LANE LEGEND**

**TYPICAL LOCATIONS:**

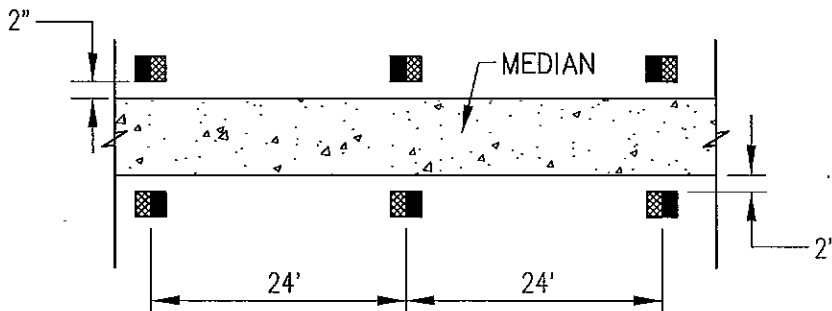
- 10' AFTER START OF BIKE LANE AT INTERSECTION
- 10' AFTER START OF BIKE LANE ALONG RIGHT TURN LANE
- BEFORE 39A STRIPE AT APPROACH TO A TRAFFIC SIGNAL WITHOUT RIGHT TURN LANE

SYMBOL SHALL BE CENTERED IN BIKE LANE



**BICYCLE LOOP DETECTOR SYMBOL**

SEE CALTRANS STANDARD PLAN A24C FOR PAVEMENT MARKINGS SYMBOLS.



**DETAIL 26 - FOR USE ADJACENT TO MEDIANS**

SEE CALTRANS STANDARD PLAN A20B FOR PAVEMENT MARKER TYPE.

CHIEF, DEPT. OF TRANSPORTATION

**COUNTY OF SACRAMENTO  
MUNICIPAL SERVICES AGENCY**

**STRIPING AND PAVEMENT  
MARKING DETAILS**

SCALE: NONE  
DATE: 03/07  
DRAWN BY: L. GHELFI

**4-45**