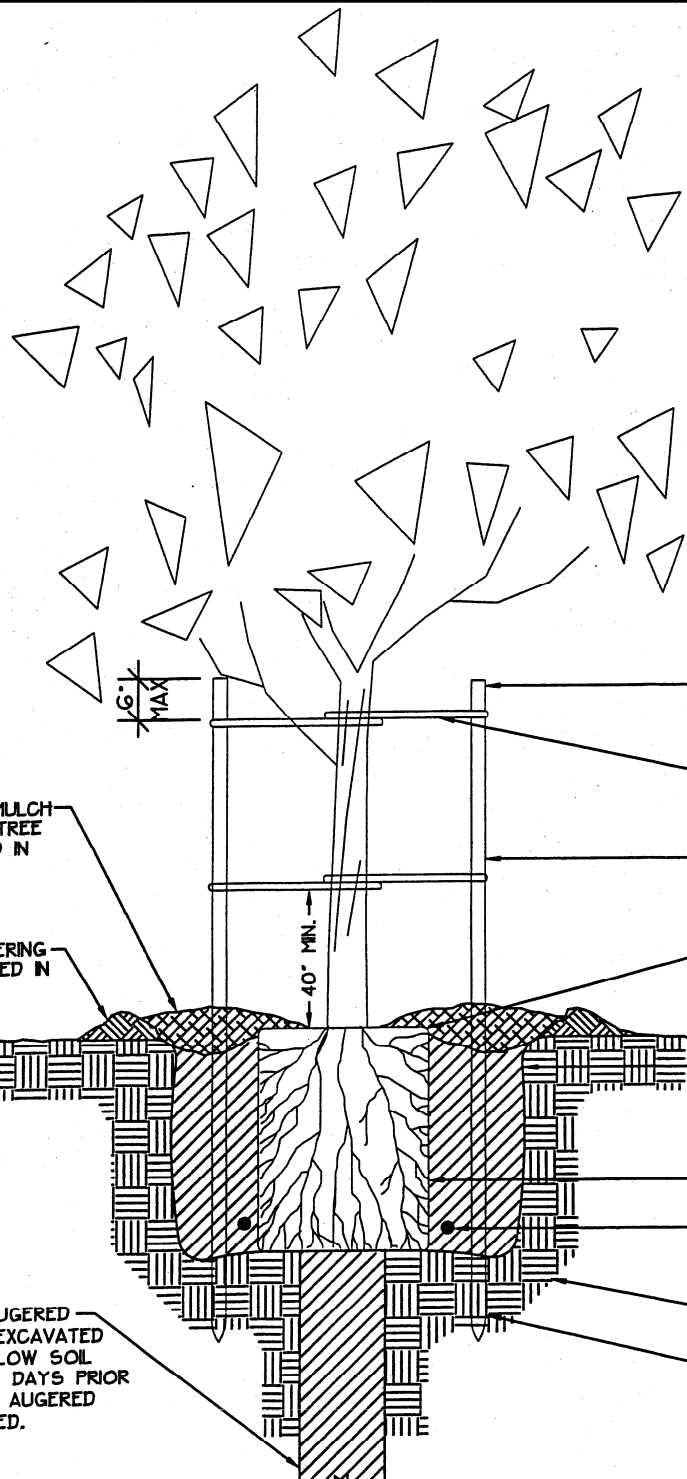


| DRAWING NUMBER | TITLE |
|-----------------------|--|
| L-1 | TREE PLANTING (11/00) |
| L-2 | SHRUB PLANTING (11/00) |
| L-3 | REMOTE CONTROL VALVE (11/00) |
| L-4 | DRIP IRRIGATION VALVE ASSEMBLY (12/07) |
| L-5A | GATE VALVE (12/07) |
| L-6 | MASTER VALVE/FLOW SENSOR (BELOW GRADE) (12/07) |
| L-6A | 1-1/2" & 2" SIZE MASTER VALVE/FLOW SENSOR (ABOVE GRADE) (12/07) |
| L-6B | 3" SIZE AND LARGER MASTER VALVE/FLOW SENSOR (ABOVE GRADE) (12/07) |
| L-7 | FLUSH VALVE (12/07) |
| L-8 | AIR RELIEF VALVE (11/00) |
| L-9 | POP-UP ROTOR SPRINKLER (11/00) |
| L-10 | POP-UP SPRAY SPRINKLER (11/00) |
| L-11 | BUBBLER SPRINKLER HEAD (11/00) |
| L-12 | DRIP IRRIGATION MULTI-OUTLET EMITTER (11/00) |
| L-13 | SUBSURFACE IN-LINE DRIP IRRIGATION LAYOUT (11/00) |
| L-14 | SUBSURFACE IN-LINE DRIP IRRIGATION CENTER-FEED SUPPLY MANIFOLD (11/00) |
| L-15 | SUBSURFACE IN-LINE DRIP IRRIGATION END-FEED SUPPLY MANIFOLD (11/00) |
| L-16 | DEEP WATERING PIPE FOR TREES (11/00) |
| L-17 | IRRIGATION CONTROLLER ENCLOSURE (11/00) |
| L-18 | IRRIGATION SYSTEM TRENCHING (11/00) |
| L-19 | DRINKING FOUNTAIN (11/00) |
| L-20 | POST AND CABLE FENCING (11/00) |
| L-21 | KNOCK-DOWN BOLLARD & STATIONARY BOLLARD (11/00) |
| L-22 | REMOVABLE BOLLARD (11/00) |
| L-23 | CONCRETE WALK (11/00) |
| L-24 | CONCRETE MOWSTRIP (11/00) |
| L-25 | BIKETRAIL PAVING SECTION (11/00) |
| L-26 | ROADWAY MEDIAN SECTION (11/00) |
| L-27 | REDWOOD HEADERBOARD (11/00) |
| L-28 | DOUBLE PIPE GATE (11/00) |
| L-29 | SINGLE PIPE GATE (11/00) |



3" LAYER OF WOOD MULCH
KEEP 3" AWAY FROM TREE
CROWN. NOT REQUIRED IN
LAWN AREAS.

3" HIGH SOIL WATERING
BASIN. NOT REQUIRED IN
LAWN AREAS.

FINISHED GRADE

12" DIA. X 10' DEEP AUGERED
HOLE. BACKFILL WITH EXCAVATED
MATERIAL AND JET. ALLOW SOIL
TO SETTLE FOR FOUR DAYS PRIOR
TO PLANTING. PROVIDE AUGERED
HOLE ONLY IF SPECIFIED.

6" MAX

40" MIN.

END OF STAKE SHALL NOT
EXTEND INTO TREE CANOPY.
CUT AS NECESSARY

RUBBER CINCH TREE TIE. NAIL
THROUGH KNOT. FOUR (4)
PER TREE

2" DIA. PRESSURE-TREATED LODGE
POLE PINE TREE STAKE. TWO (2)
PER TREE

PLACE ROOTBALL 1" ABOVE
FINISHED GRADE. PROVIDE
POSITIVE DRAINAGE AWAY FROM
CROWN.

PLANTING PIT SHALL BE 2X
THE DIAMETER OF THE ROOTBALL
SCARIFY SIDES/BOTTOM AND
BACKFILL WITH NATIVE SOIL

ROOT BALL

FERTILIZER TABLET OR PACKET
TYP. SEE SPECIFICATIONS

UNDISTURBED SOIL

TREE STAKES SHALL BE
INSTALLED A MINIMUM OF
6" INTO UNDISTURBED SOIL

[Handwritten Signature]
DIRECTOR

NOTE:

- FOR 36" BOX TREES, STAKE WITH TWO 2" X 12' LONG SCHEDULE 40 GALVANIZED STEEL PIPES, PAINTED WITH TWO COATS OF DARK GREEN PAINT. TIE TREE WITH A METAL TWIST BRACE BOLTED TO THE STAKES OR OTHER APPROVED TREE TIE AS SPECIFIED.

COUNTY OF SACRAMENTO
MUNICIPAL SERVICES AGENCY



TREE PLANTING

SCALE: NONE
DATE: 11/2000

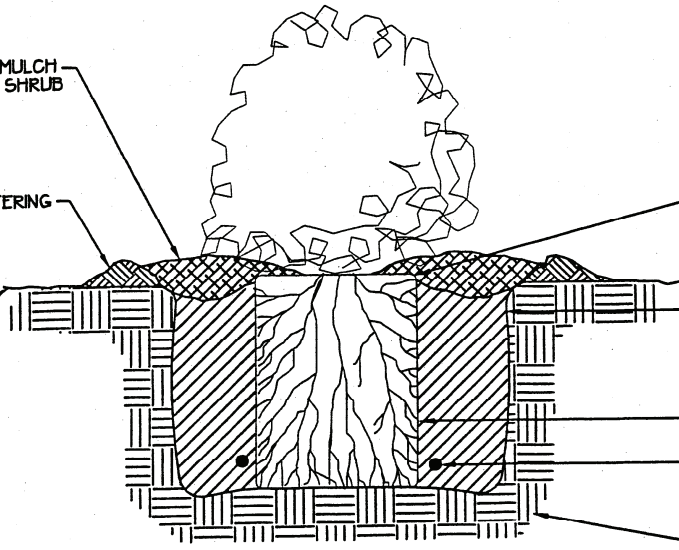
DRAWN BY: GMM
CHECKED BY: GMM

SHEET:
L-1

3" LAYER OF WOOD MULCH
KEEP 3" AWAY FROM SHRUB
CROWN

3" HIGH SOIL WATERING
BASIN

FINISHED GRADE



PLACE ROOTBALL 1" ABOVE
FINISHED GRADE. PROVIDE
POSITIVE DRAINAGE AWAY FROM
CROWN.

PLANTING PIT SHALL BE 2X
THE DIAMETER OF THE ROOTBALL
SCARIFY SIDES/BOTTOM AND
BACKFILL WITH NATIVE SOIL

ROOT BALL

FERTILIZER TABLET OR PACKET
TYP. SEE SPECIFICATIONS

UNDISTURBED SOIL

J. Fathouch
DIRECTOR

COUNTY OF SACRAMENTO
MUNICIPAL SERVICES AGENCY

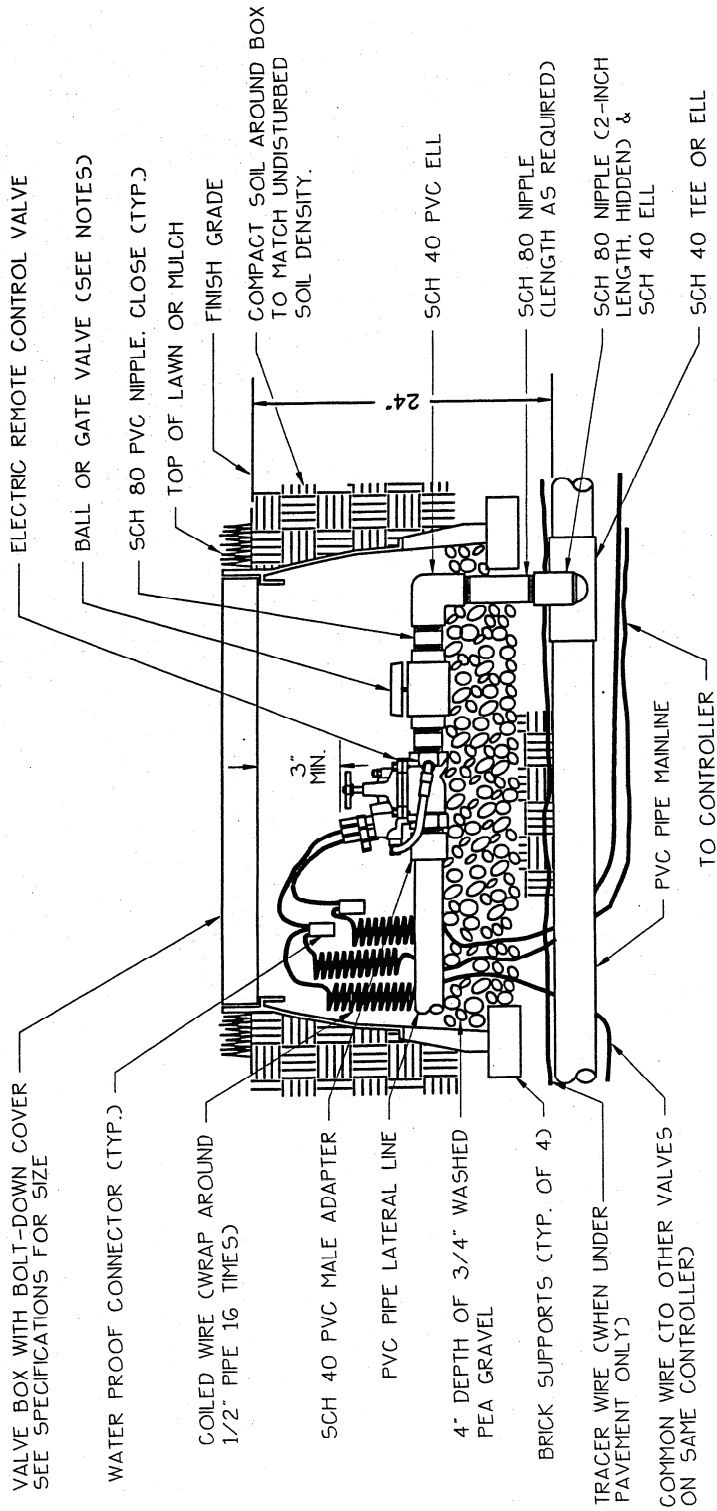


SHRUB PLANTING

SCALE: NONE
DATE: 11/2000

DRAWN BY: GMM
CHECKED BY: GMM

SHEET:
L-2



- NOTES:
1. ALL WIRE SHALL BE TAPED AND BUNDLED EVERY TEN FEET AND SHALL BE INSTALLED AS PER LOCAL CODE.
 2. SHUT-OFF VALVES 3" AND SMALLER SHALL BE SCH 80 BALL VALVES. VALVES LARGER THAN 3" SHALL BE BRASS GATE VALVES.

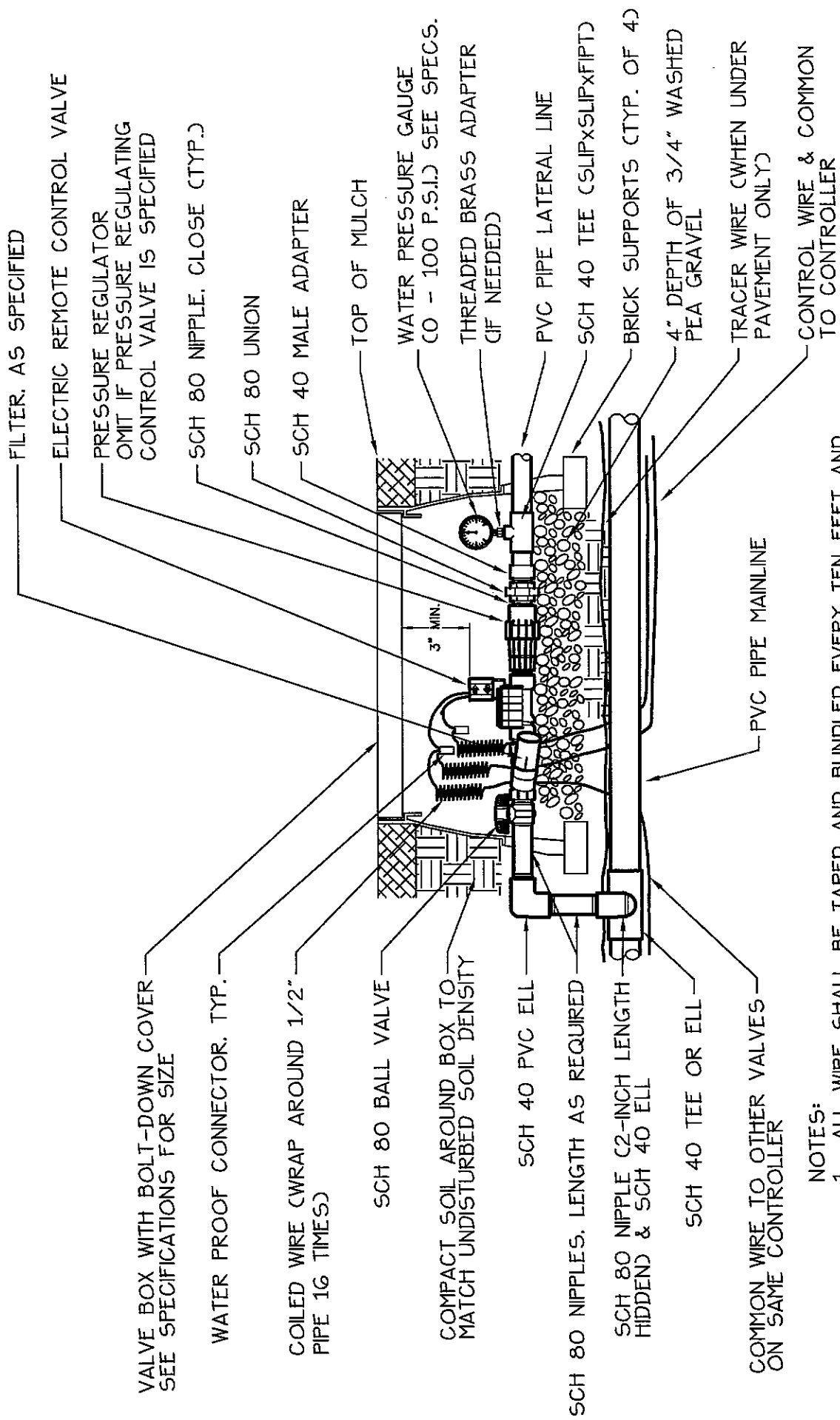


COUNTY OF SACRAMENTO
MUNICIPAL SERVICES AGENCY

REMOTE CONTROL VALVE

| | | |
|---------------|-----------------|------------|
| SCALE: NONE | DRAWN BY: GMM | SHEET: L-3 |
| DATE: 11/2000 | CHECKED BY: GMM | |

[Signature]
DIRECTOR



FILTER, AS SPECIFIED

ELECTRIC REMOTE CONTROL VALVE

PRESSURE REGULATOR
OMIT IF PRESSURE REGULATING
CONTROL VALVE IS SPECIFIED

SCH 80 NIPPLE, CLOSE (TYP.)

SCH 80 UNION

SCH 40 MALE ADAPTER

TOP OF MULCH

WATER PRESSURE GAUGE
CO - 100 P.S.I.) SEE SPECS.

THREADED BRASS ADAPTER
(IF NEEDED)

PVC PIPE LATERAL LINE

SCH 40 TEE (SLIPXSLIPFT)

BRICK SUPPORTS (TYP. OF 4)

4" DEPTH OF 3/4" WASHED
PEA GRAVEL

TRACER WIRE (WHEN UNDER
PAVEMENT ONLY)

CONTROL WIRE & COMMON
TO CONTROLLER

VALVE BOX WITH BOLT-DOWN COVER
SEE SPECIFICATIONS FOR SIZE

WATER PROOF CONNECTOR, TYP.

COILED WIRE (WRAP AROUND 1/2"
PIPE 16 TIMES)

SCH 80 BALL VALVE

COMPACT SOIL AROUND BOX TO
MATCH UNDISTURBED SOIL DENSITY

SCH 40 PVC ELL

SCH 80 NIPPLES, LENGTH AS REQUIRED

SCH 80 NIPPLE C2-INCH LENGTH
HIDDEN & SCH 40 ELL

SCH 40 TEE OR ELL

COMMON WIRE TO OTHER VALVES
ON SAME CONTROLLER

PVC PIPE MAINLINE

NOTES:

1. ALL WIRE SHALL BE TAPED AND BUNDLED EVERY TEN FEET AND SHALL BE INSTALLED AS PER LOCAL CODE.

COUNTY OF SACRAMENTO
MUNICIPAL SERVICES AGENCY

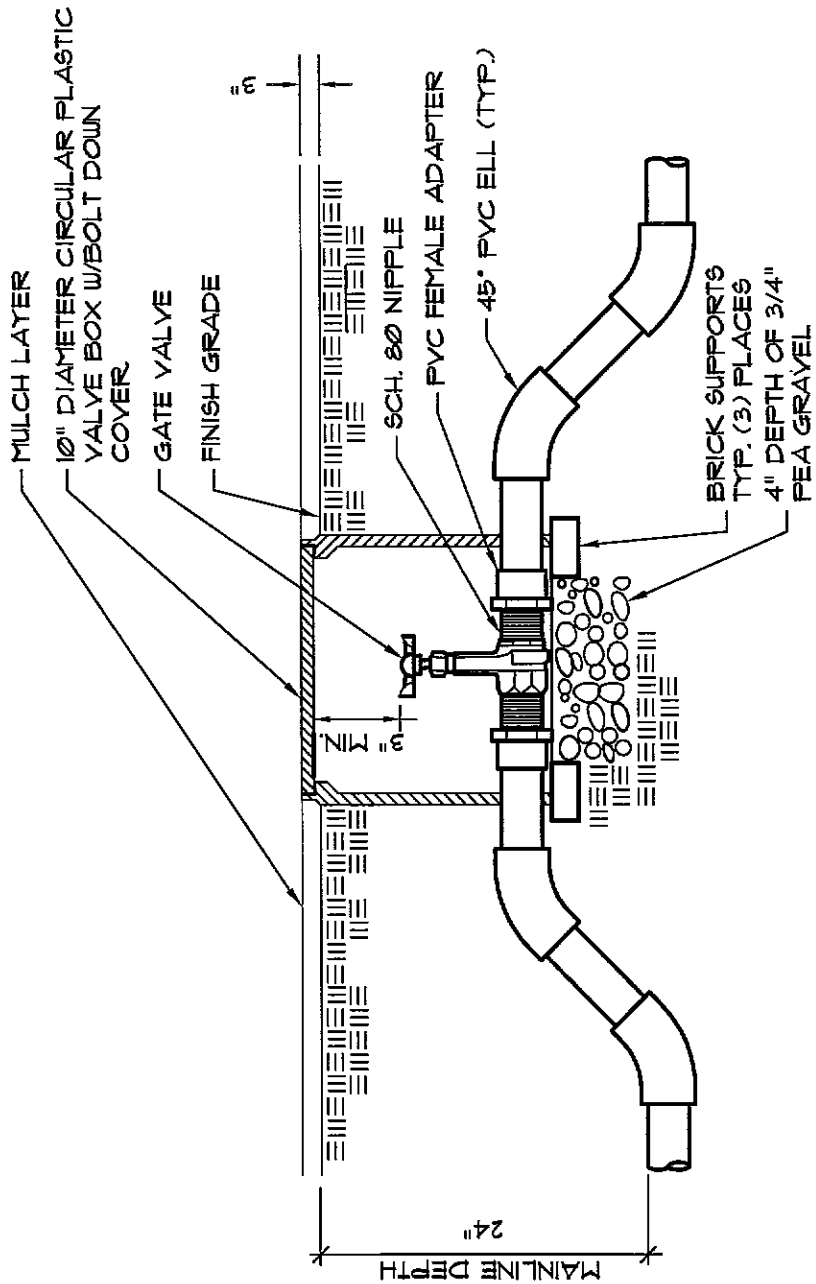
DRIP IRRIGATION
VALVE ASSEMBLY

SCALE: NONE
DATE: 12/2007

DRAWN BY: GMM/HY
CHECKED BY: HY

SHEET:
L-4

CHIEF, DEPT. OF TRANSPORTATION



COUNTY OF SACRAMENTO
MUNICIPAL SERVICES AGENCY

GATE VALVE

SCALE: NONE
DATE: 12/2007

DRAWN BY: SB
CHECKED BY: HY

SHEET:
L-5A

CHIEF, DEPT. OF TRANSPORTATION

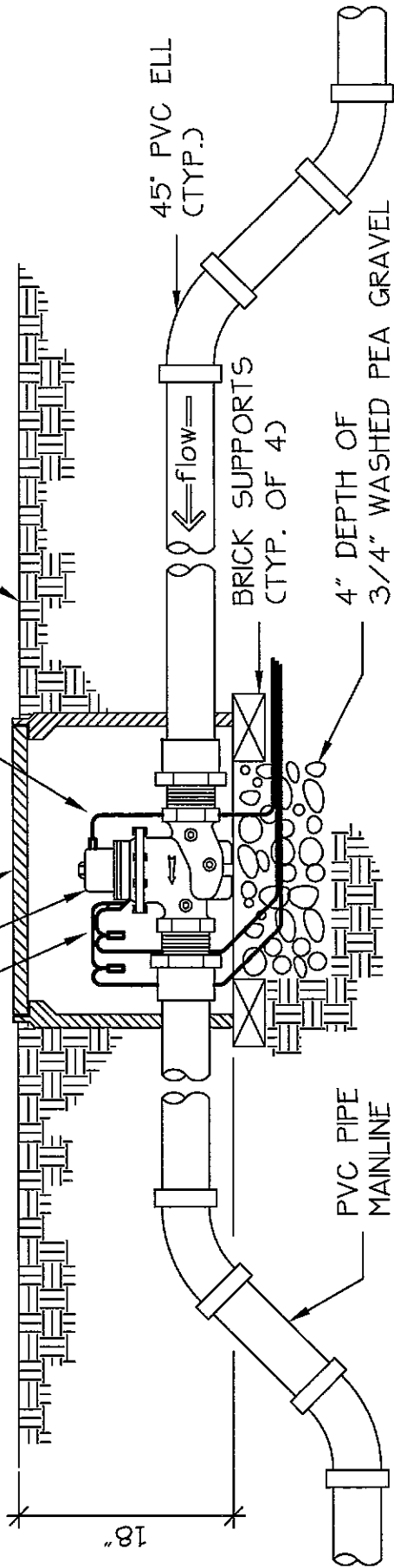
VALVE BOX WITH BOLT-DOWN COVER.
SEE SPECIFICATIONS FOR SIZE

FLOW SENSOR/MASTER VALVE

3- #14 MASTER VALVE SOLENOID
WIRES TO CONTROLLER. INSTALL
AS PER MANUFACTURER'S
SPECIFICATIONS. COIL WIRE
CWRAP AROUND 1/2" PIPE 16
TIMES))

2- #14 FLOW SENSOR WIRES TO
CONTROLLER. INSTALL AS PER
MANUFACTURER'S SPECIFICATIONS.
COIL WIRE CWRAP AROUND 1/2" PIPE
16 TIMES))

FINISH GRADE



COUNTY OF SACRAMENTO
MUNICIPAL SERVICES AGENCY

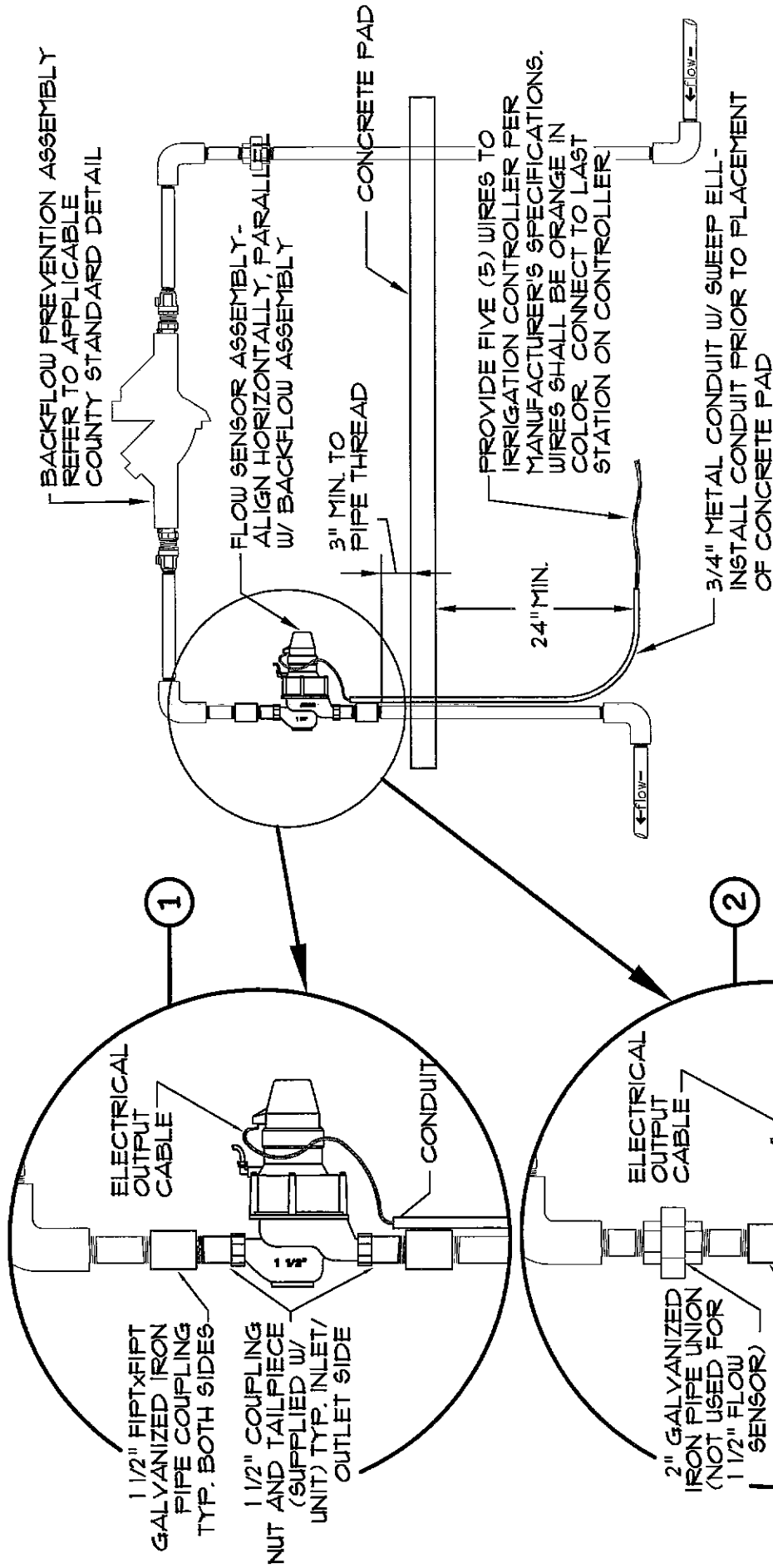
MASTER VALVE/
FLOW SENSOR
(BELOW GRADE)

SCALE: NONE
DATE: 12/2007

DRAWN BY: CA
CHECKED BY: HY

SHEET:
L-6

CHIEF, DEPT. OF TRANSPORTATION



NOTE:

- ① 1 1/2" FLOW SENSOR FOR FLOW RATES 66 - 66 GPM.
- ② 2" FLOW SENSOR FOR FLOW RATES 88 - 110 GPM.
- ③ COIL WIRE ADJACENT TO FLOW SENSOR (WRAP AROUND 1/2" PIPE 16 TIMES) FOR SLACK, TYP. FOR EITHER FLOW SENSOR.
- ④ FLOW SENSOR SPECIFICATION IN ACCORDANCE WITH IRRIGATION PLAN

| | |
|--|-----------------|
| COUNTY OF SACRAMENTO MUNICIPAL SERVICES AGENCY | |
| 1-1/2" & 2" SIZE MASTER VALVE/FLOW SENSOR (ABOVE GRADE) | |
| SCALE: NONE | DRAWN BY: SF/HY |
| DATE: 12/2007 | CHECKED BY: HY |
| SHEET: L-6A | |


 CHIEF, DEPT. OF TRANSPORTATION

BACKFLOW PREVENTION DEVICE
REFER TO APPLICABLE
COUNTY STANDARD DETAIL

FLOW SENSOR ASSEMBLY -
ALIGN HORIZONTALLY, PARALLEL
W/ BACKFLOW ASSEMBLY

3" MIN. TO PIPE THREAD

CONCRETE PAD

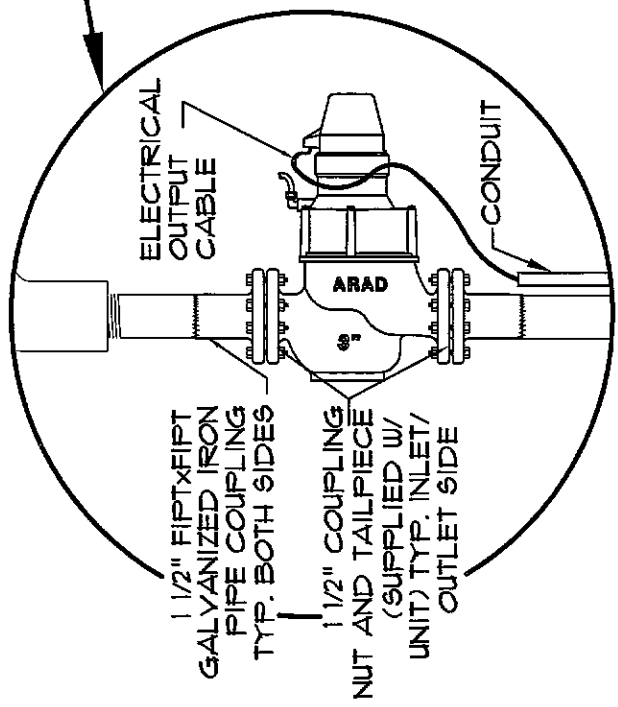
24" MIN.

PROVIDE FIVE (5) WIRES TO
IRRIGATION CONTROLLER PER
MANUFACTURER'S SPECIFICATIONS.
WIRES SHALL BE ORANGE IN
COLOR. CONNECT TO LAST
STATION ON CONTROLLER

3/4" METAL CONDUIT W/ SWEEP ELL -
INSTALL CONDUIT PRIOR TO PLACEMENT
OF CONCRETE PAD

NOTE:

- ① COIL WIRE ADJACENT TO FLOW SENSOR (WRAP AROUND 1/2" PIPE 16 TIMES) FOR SLACK, TYP.
- ② FLOW SENSOR SPECIFICATION IN ACCORDANCE WITH IRRIGATION PLAN

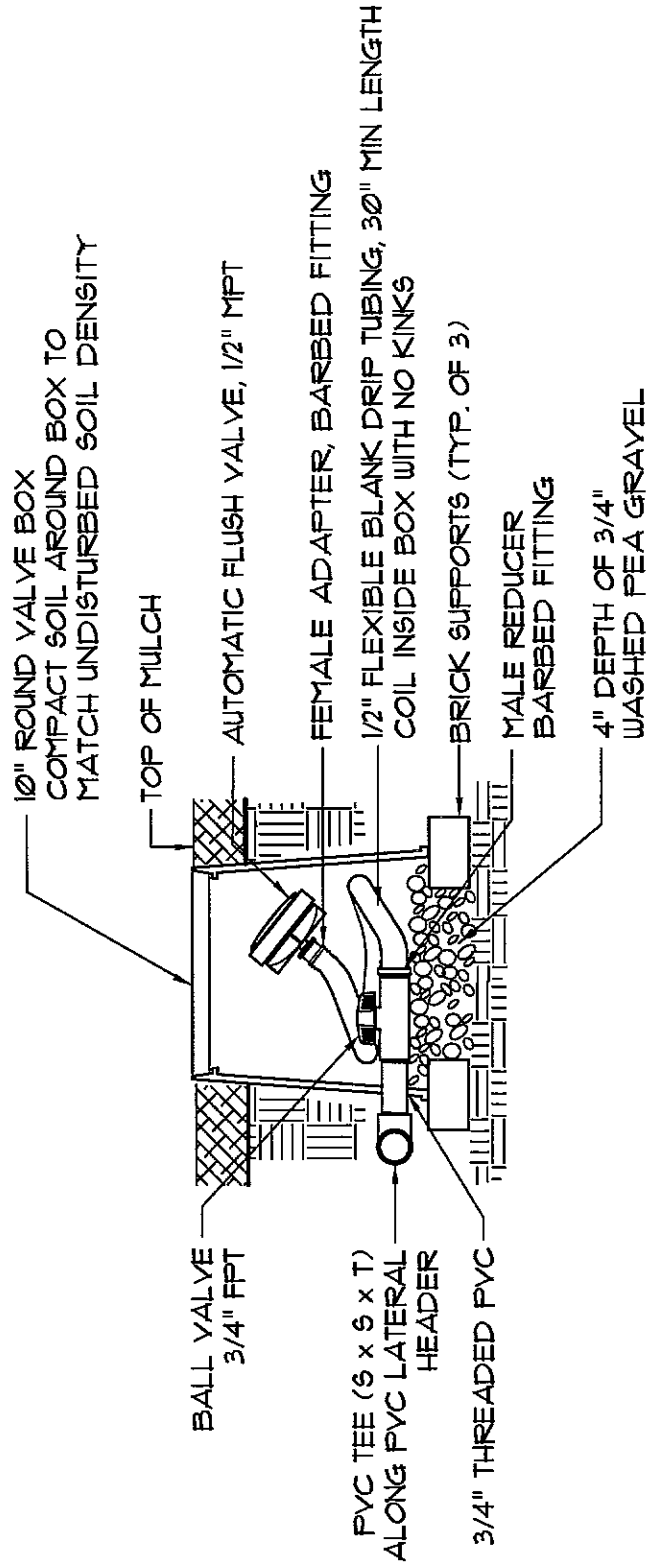


COUNTY OF SACRAMENTO
MUNICIPAL SERVICES AGENCY

3" SIZE AND LARGER
MASTER VALVE/FLOW SENSOR
(ABOVE GRADE)

| | | |
|---------------|-----------------|-------------|
| SCALE: NONE | DRAWN BY: SF/HY | SHEET: L-6B |
| DATE: 12/2007 | CHECKED BY: HY | |

CHIEF, DEPT. OF TRANSPORTATION



COUNTY OF SACRAMENTO
MUNICIPAL SERVICES AGENCY

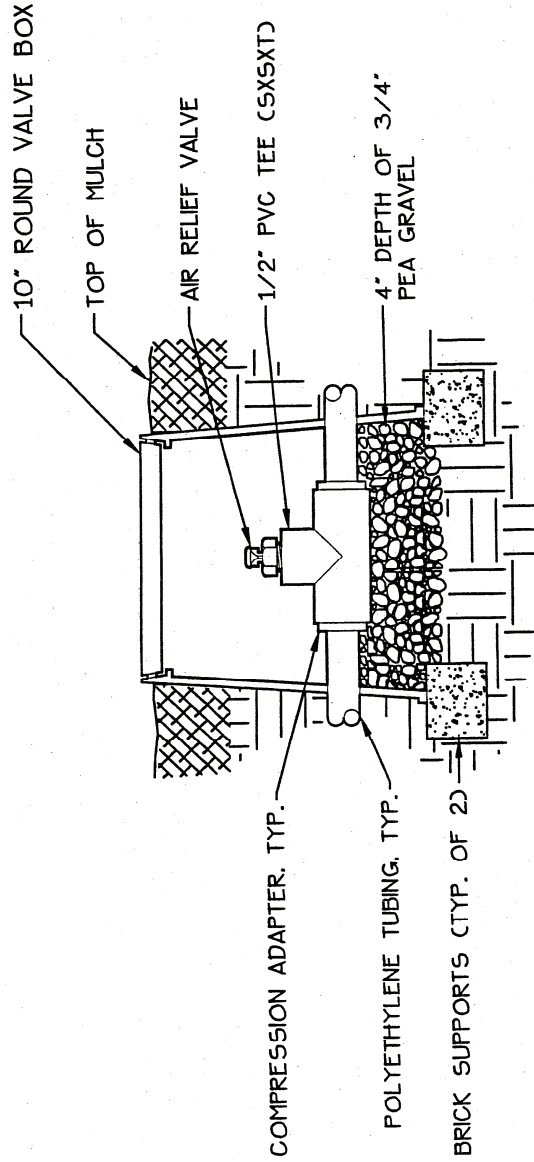
FLUSH VALVE

SCALE: NONE
DATE: 12/2007

DRAWN BY: HY
CHECKED BY: HY

SHEET:
L-7

CHIEF, DEPT. OF TRANSPORTATION



NOTE:
 1. AIR RELIEF VALVE SHALL BE INSTALLED AT THE HIGHEST POINT OF THE SYSTEM, ABOVE ALL DRIPLINE LATERALS.

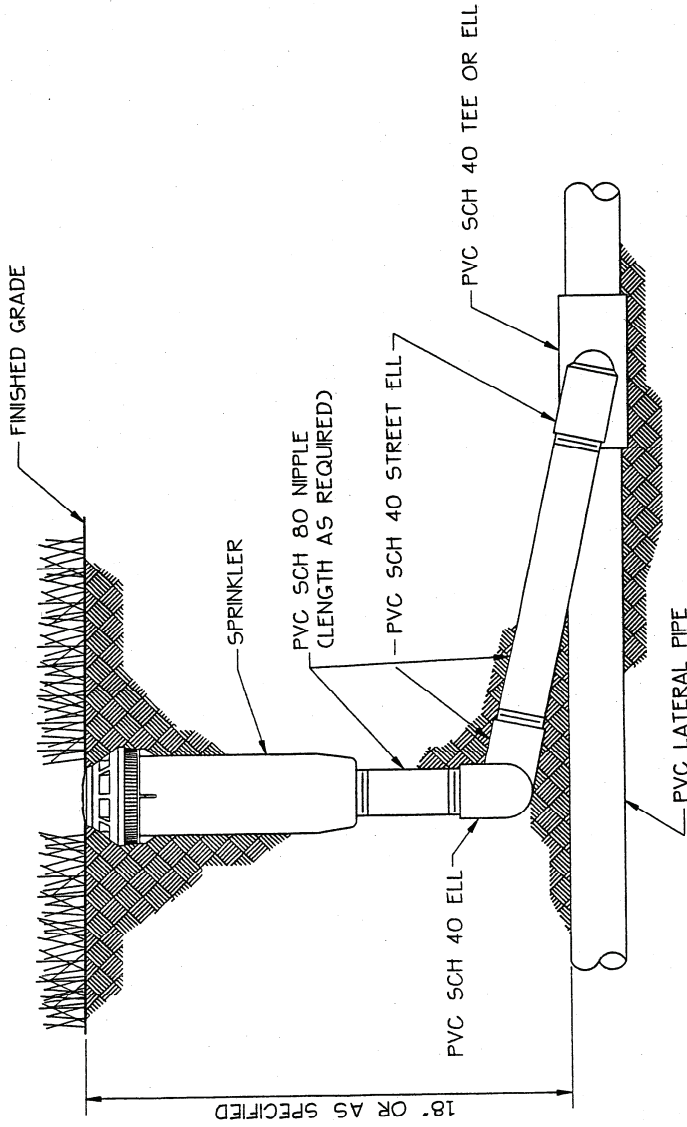


COUNTY OF SACRAMENTO
 MUNICIPAL SERVICES AGENCY

AIR RELIEF VALVE

| | | |
|---------------|-----------------|------------|
| SCALE: NONE | DRAWN BY: GMM | SHEET: L-8 |
| DATE: 11/2000 | CHECKED BY: GMM | |

J. J. [Signature]
 DIRECTOR



NOTES:

1. INSTALLATION OF TRIPLE SWING JOINTS SHALL BE AT AN ANGLE NO GREATER THAN 45 DEGREES TO HORIZONTAL.
2. ALL PRE-MANUFACTURED TRIPLE SWING JOINTS SHALL BE MANUFACTURED WITH O-RINGS AND SHALL BE RATED TO P51.

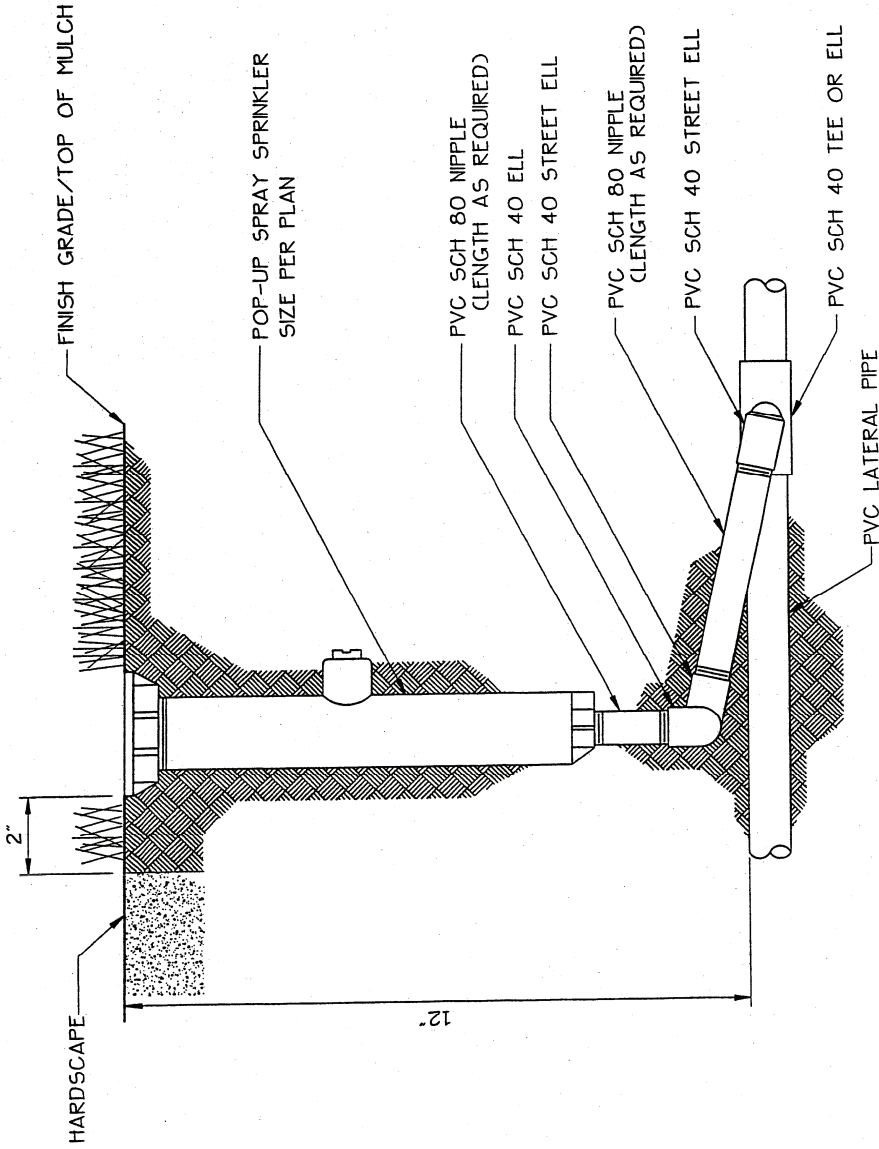


COUNTY OF SACRAMENTO
MUNICIPAL SERVICES AGENCY

POP-UP ROTOR SPRINKLER

| | | |
|---------------|------------------|------------|
| SCALE: NONE | DRAWN BY: TRU P. | SHEET: L-9 |
| DATE: 11/2000 | CHECKED BY: GMM | |

J. H. Harkness
DIRECTOR



NOTES:

1. INSTALLATION OF TRIPLE SWING JOINTS SHALL BE AT AN ANGLE NO GREATER THAN 45 DEGREES TO HORIZONTAL.
2. ALL PRE-MANUFACTURED TRIPLE SWING JOINTS SHALL BE MANUFACTURED WITH O-RINGS AND SHALL BE RATED AT 200 PSI.

[Signature]
 DIRECTOR



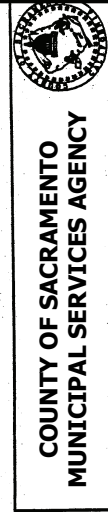
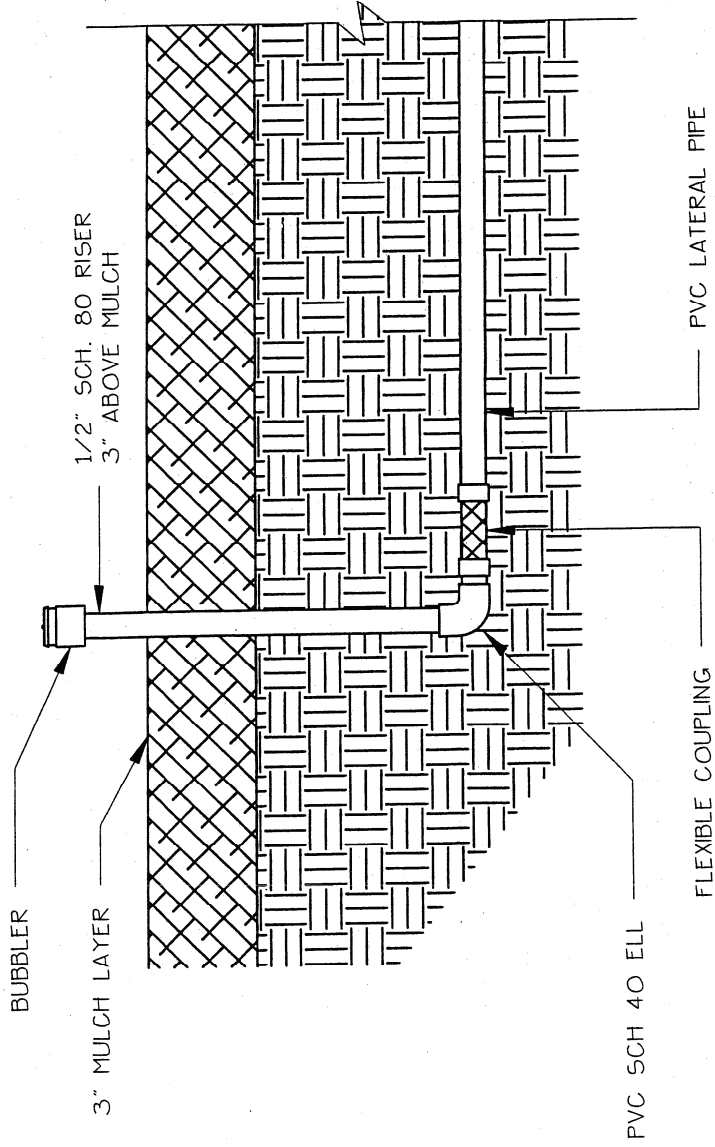
**COUNTY OF SACRAMENTO
 MUNICIPAL SERVICES AGENCY**

POP-UP SPRAY SPRINKLER

SCALE: NONE
 DATE: 11/2000

DRAWN BY: TRU P.
 CHECKED BY: GMM

SHEET:
 L-10

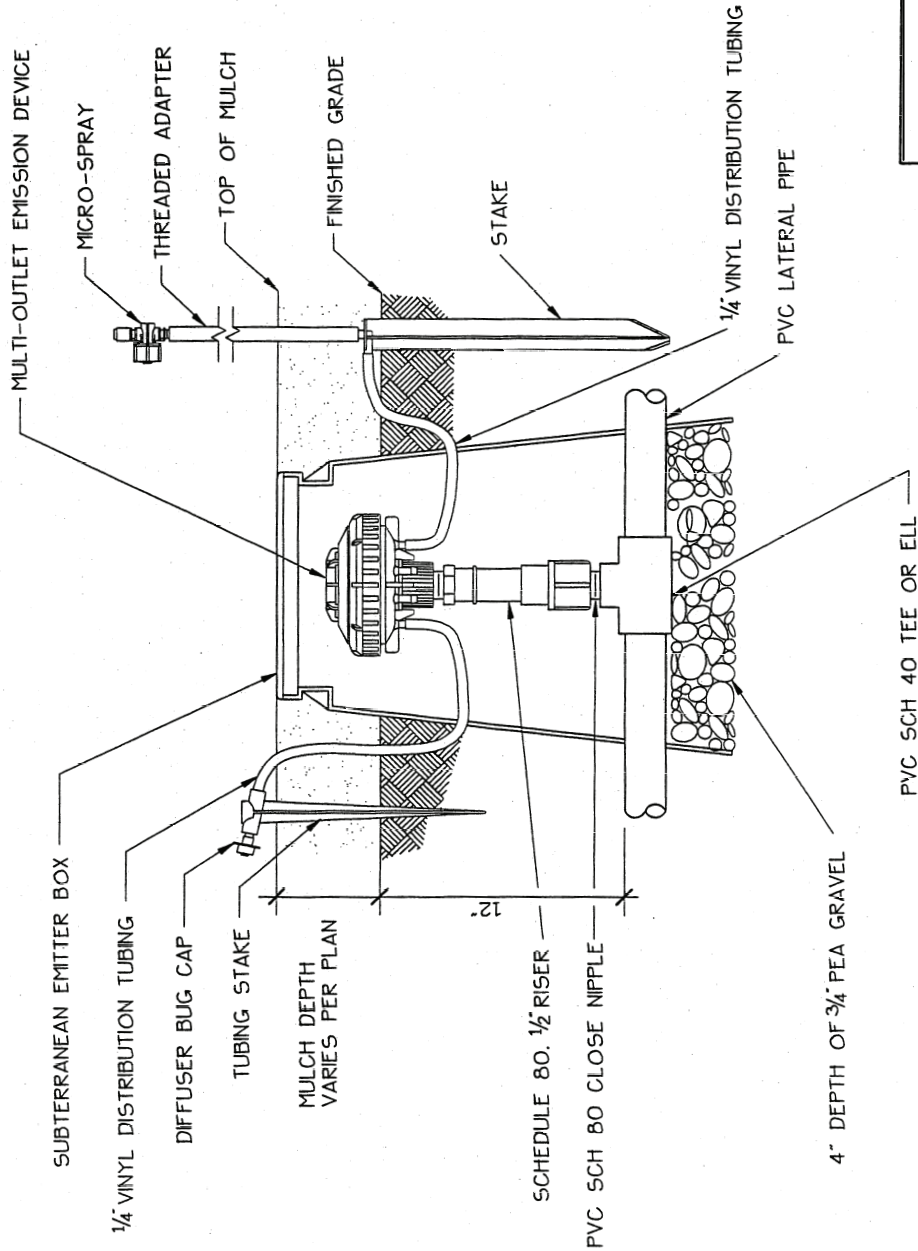


COUNTY OF SACRAMENTO
MUNICIPAL SERVICES AGENCY

BUBBLER SPRINKLER HEAD

| | | |
|---------------|-----------------|-------------|
| SCALE: NONE | DRAWN BY: G.A. | SHEET: L-11 |
| DATE: 11/2000 | CHECKED BY: GMM | |

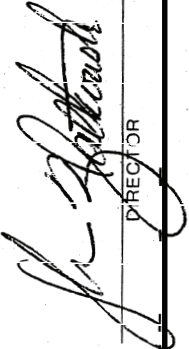
J. J. [Signature]
DIRECTOR




 COUNTY OF SACRAMENTO
 MUNICIPAL SERVICES AGENCY

DRIP IRRIGATION
MULTI-OUTLET EMITTER

SCALE: NONE
 DATE: 11/2000
 DRAWN BY: TRU P.
 CHECKED BY: GMM
 SHEET:
L-12


 DIRECTOR

AIR/VACUUM RELIEF VALVE.
PLUMBED TO TUBING AT HIGH
POINT OF PLANTER (TYPICAL).

CLASS 200 PVC LATERAL LINE.
SIZE PER PLAN (TYPICAL). INSTALLED
AT 12" BELOW FINISHED GRADE.

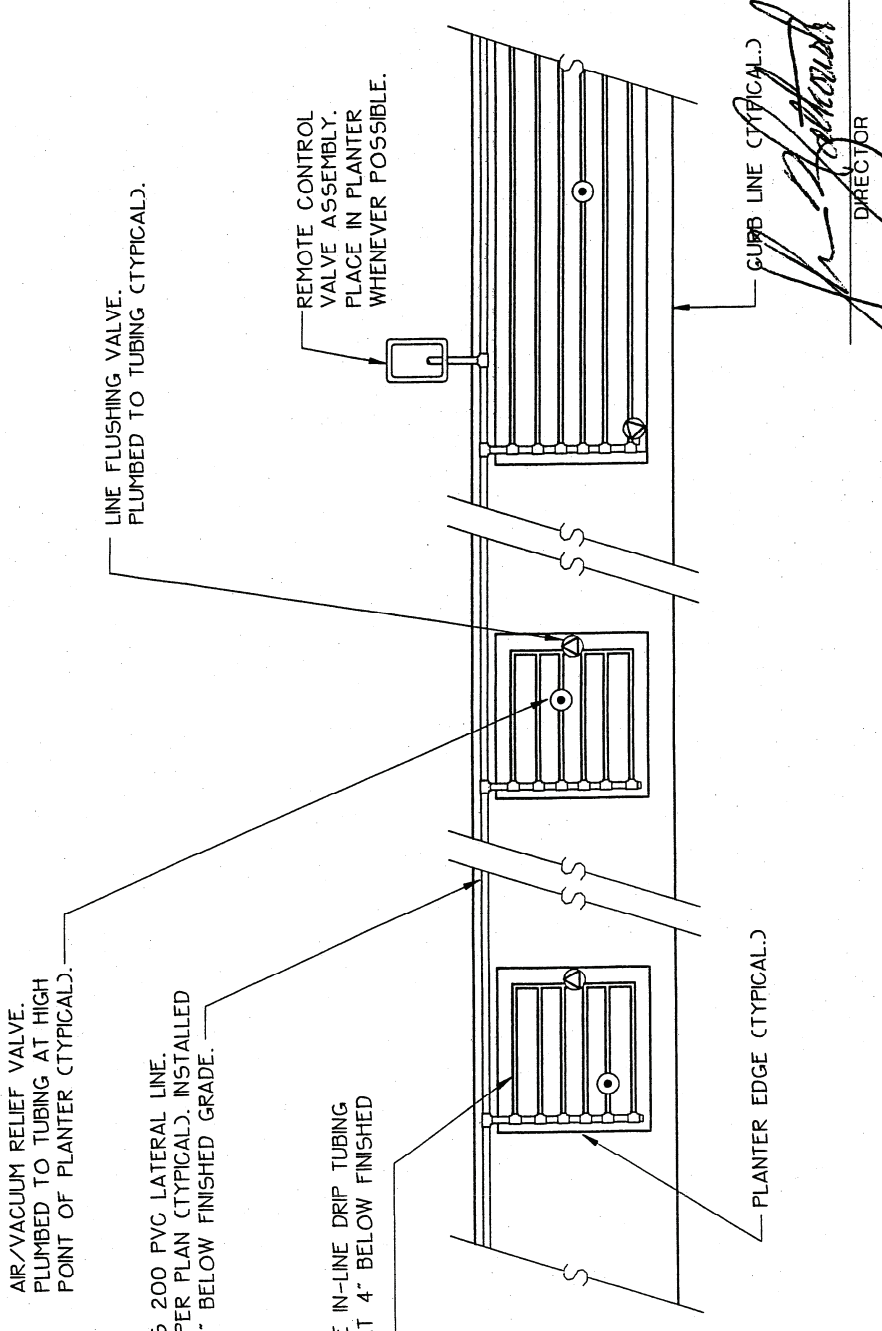
SUBSURFACE IN-LINE DRIP TUBING
INSTALLED AT 4" BELOW FINISHED
GRADE

LINE FLUSHING VALVE.
PLUMBED TO TUBING (TYPICAL).

REMOTE CONTROL
VALVE ASSEMBLY.
PLACE IN PLANTER
WHENEVER POSSIBLE.

PLANTER EDGE (TYPICAL.)

CURB LINE (TYPICAL.)



NOTE: ALL DRIP TUBING FITTINGS SHALL BE BARBED.



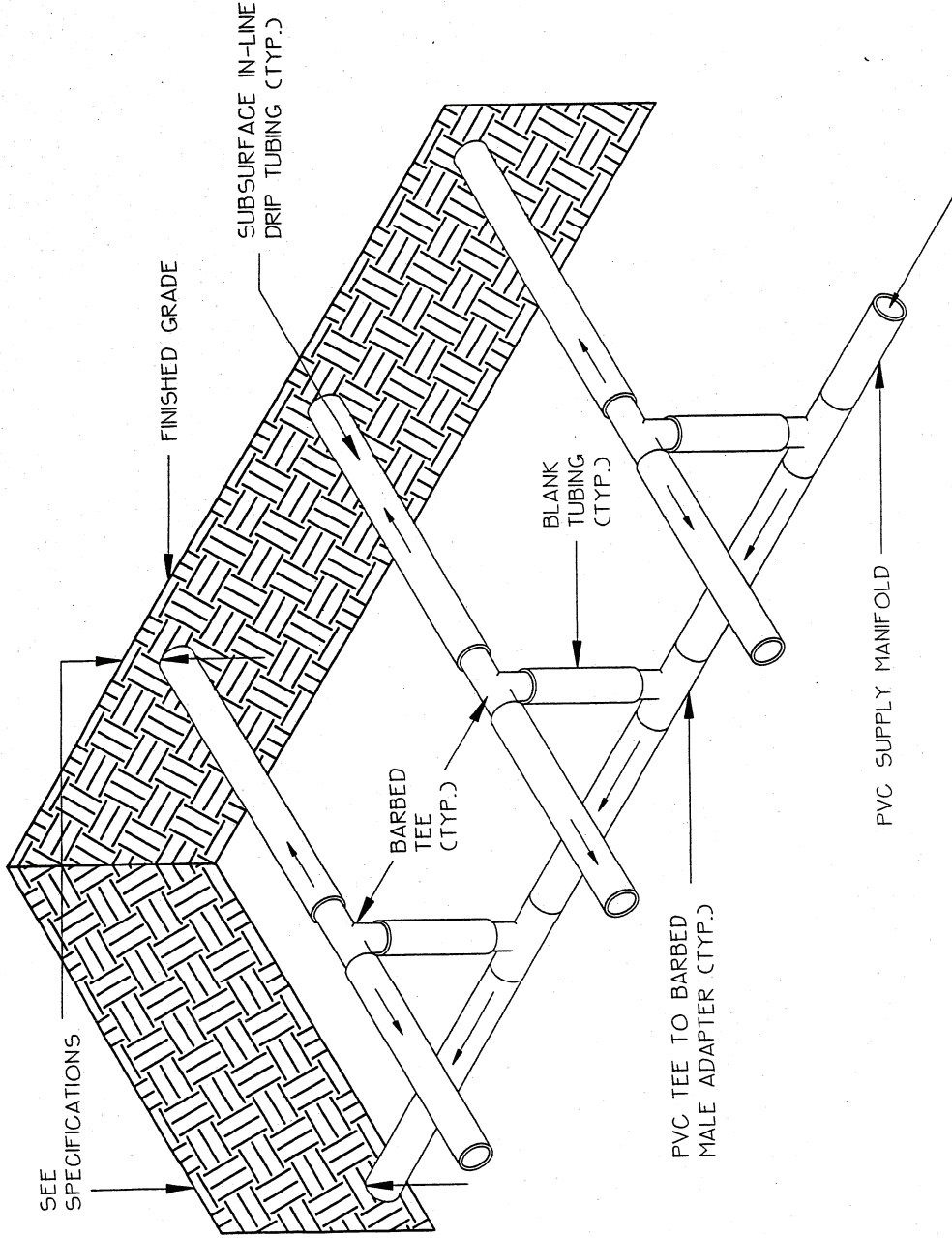
COUNTY OF SACRAMENTO
MUNICIPAL SERVICES AGENCY

DIRECTOR

[Signature]

SUBSURFACE IN-LINE DRIP IRRIGATION LAYOUT

| | | |
|---------------|------------------|-------------|
| SCALE: NONE | DRAWN BY: TRU P. | SHEET: L-13 |
| DATE: 11/2000 | CHECKED BY: GMM | |



COUNTY OF SACRAMENTO
MUNICIPAL SERVICES AGENCY



SUBSURFACE IN-LINE DRIP
IRRIGATION CENTER-FEED
SUPPLY MANIFOLD

| | | |
|---------------|-----------------|-------------|
| SCALE: NONE | DRAWN BY: G.A. | SHEET: L-14 |
| DATE: 11/2000 | CHECKED BY: GMM | |

John J. [Signature]
DIRECTOR



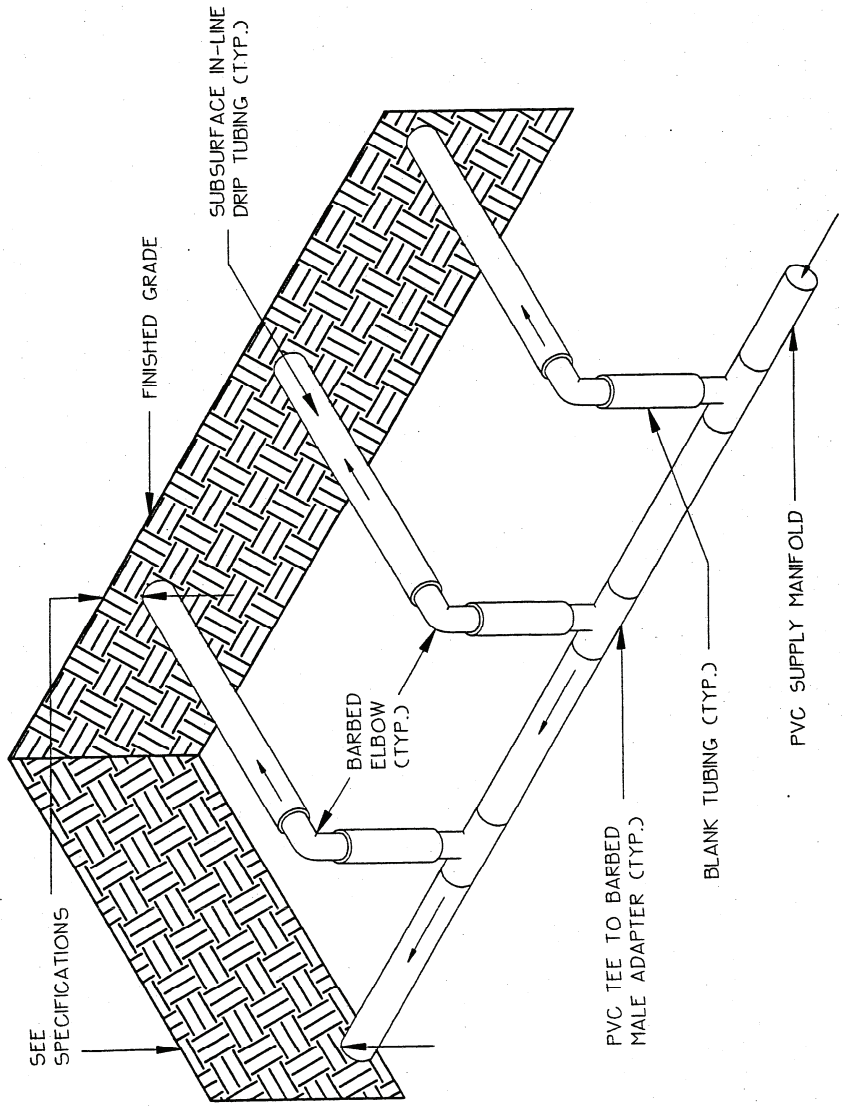
COUNTY OF SACRAMENTO
MUNICIPAL SERVICES AGENCY

**SUBSURFACE IN-LINE DRIP
IRRIGATION END-FEED
SUPPLY MANIFOLD**

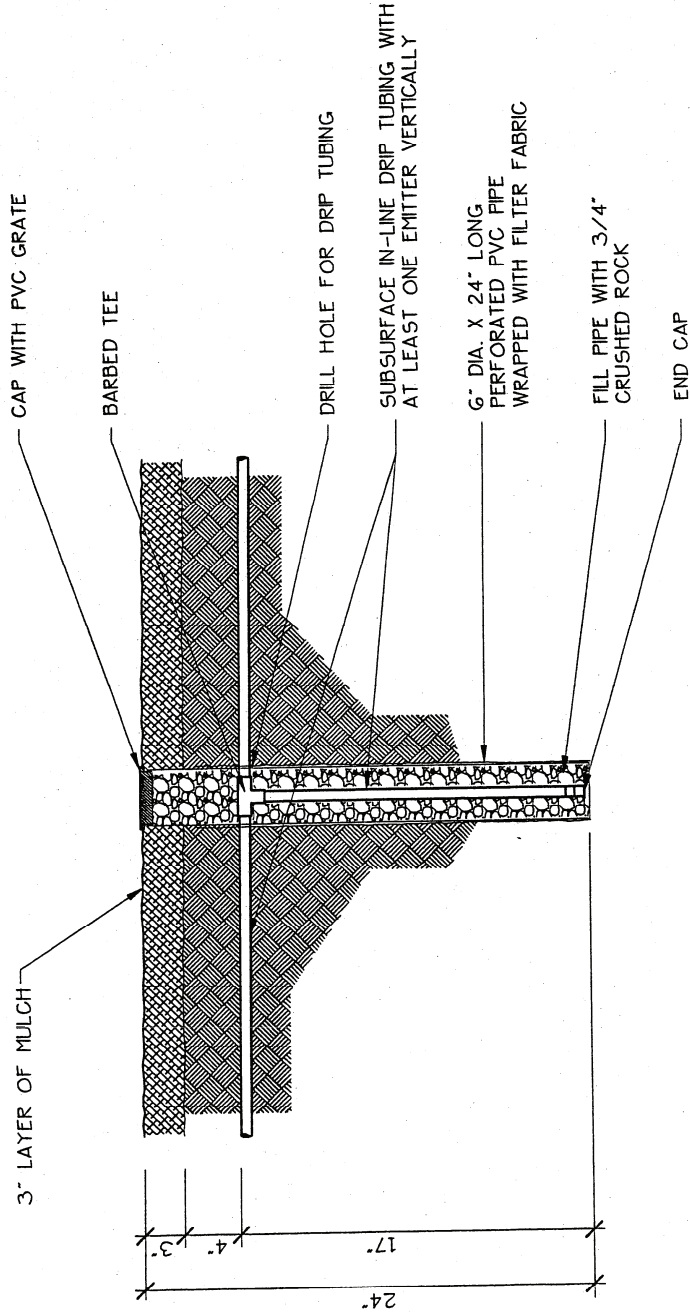
SCALE: NONE
DATE: 11/2000

DRAWN BY: GA
CHECKED BY: GMM

SHEET:
L-15



John Parkinson
DIRECTOR



COUNTY OF SACRAMENTO
MUNICIPAL SERVICES AGENCY

DEEP WATERING PIPE
FOR TREES

SCALE: NONE
DATE: 11/2000

DRAWN BY: TRU P.
CHECKED BY: GMM

SHEET:
L-16

[Signature]
DIRECTOR

CONTROLLER ENCLOSURE AS SPECIFIED

IRRIGATION CONTROLLER

3/4" WATERPROOF MARINE PLYWOOD ATTACHED TO BACK OF ENCLOSURE WITH WING-NUTS (SIZE AS REQUIRED). OMIT IF PRE-FABRICATED MOUNTING HARDWARE IS INCLUDED WITH ENCLOSURE.

RAIN SHUT OFF WITH VANDAL RESISTANT ENCLOSURE (WHEN SPECIFIED)

MOISTURE SENSOR CONTROL PANEL (WHEN SPECIFIED).

FLEX CONDUIT FOR 120V. LENGTH AS REQUIRED

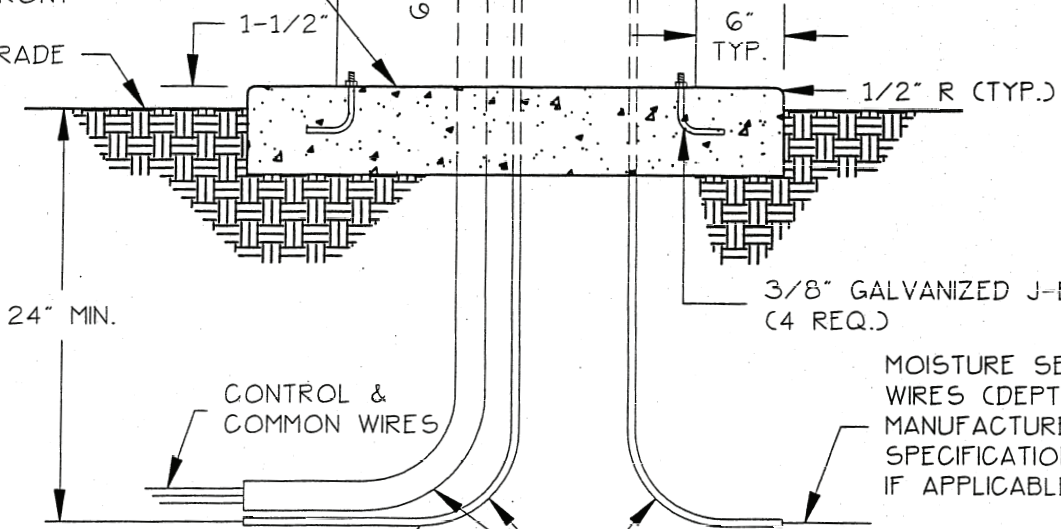
PROVIDE 12" LOOP FOR SLACK

WATERPROOF GFI PROTECTED 120V DUPLEX BOX W/ RECEPTACLE & ON/OFF SWITCH

ENCLOSURE SHALL BE MOUNTED ON A 6" THICK CONCRETE BASE. BASE SHALL EXTEND 6" FROM EACH SIDE OF ENCLOSURE & 36" IN FRONT

PEDESTAL (WHEN SPECIFIED)

FINISH GRADE



24" MIN.

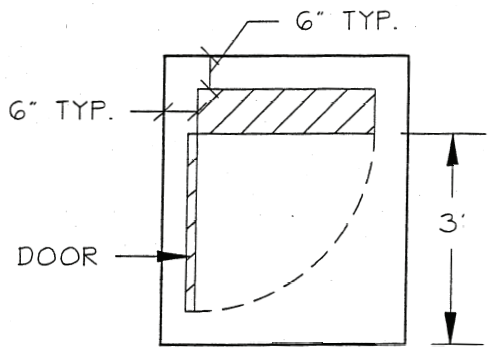
CONTROL & COMMON WIRES

3/8" GALVANIZED J-BOLTS (4 REQ.)

MOISTURE SENSOR WIRES (DEPTH PER MANUFACTURER'S SPECIFICATIONS). IF APPLICABLE

1-1/4" CONDUIT W/ 3 #14 TW CONDUCTORS FROM 120V SERVICE

SCH 80 PVC SWEEP ELLS



PLAN VIEW

[Signature]
DIRECTOR

COUNTY OF SACRAMENTO
MUNICIPAL SERVICES AGENCY



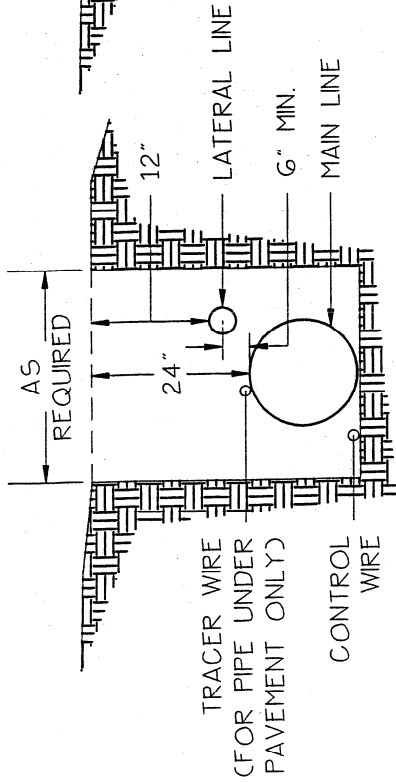
IRRIGATION CONTROLLER ENCLOSURE

SCALE: NONE
DATE: 11/2000

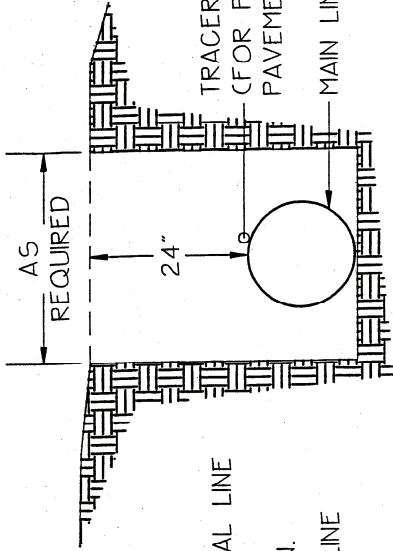
DRAWN BY: GMM
CHECKED BY: GMM

SHEET:
L-17

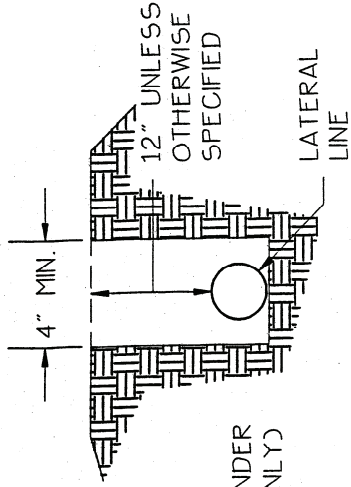
MAIN SUPPLY, LATERAL,
CONTROL WIRE &
TRACER WIRE



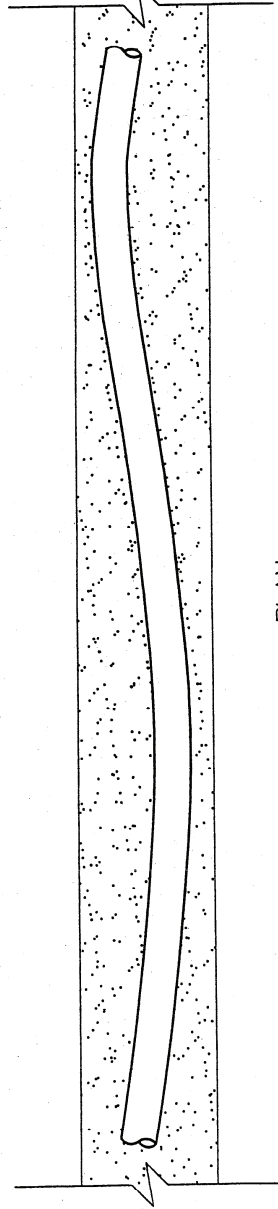
MAIN SUPPLY



PLASTIC
LATERAL



ALL PLASTIC PIPES
TO BE SNAKED
IN TRENCHES
AS SHOWN.



PLAN

NOTES:

1. ALL TRENCH DEPTHS ARE MEASURED FROM WITHIN TOP OF FINISH GRADE.
2. TRACER WIRE SHALL BE REQUIRED ONLY WHEN PIPES ARE INSTALLED UNDER PAVEMENT.
3. ALL PIPE TO BE INSTALLED IN ACCORDANCE WITH MANUFACTURER'S INSTALLATION SPECIFICATIONS.
4. IF SPRINKLER HEAD AND NIPPLE HEIGHT EXCEED 11", LATERAL LINE DEPTH SHALL BE 18".
5. INSTALL PIPE BEDDING UNDER PIPING, WHEN SPECIFIED
6. INSTALL SLEEVING UNDER PAVING PER PLANS.

DIRECTOR

[Signature]



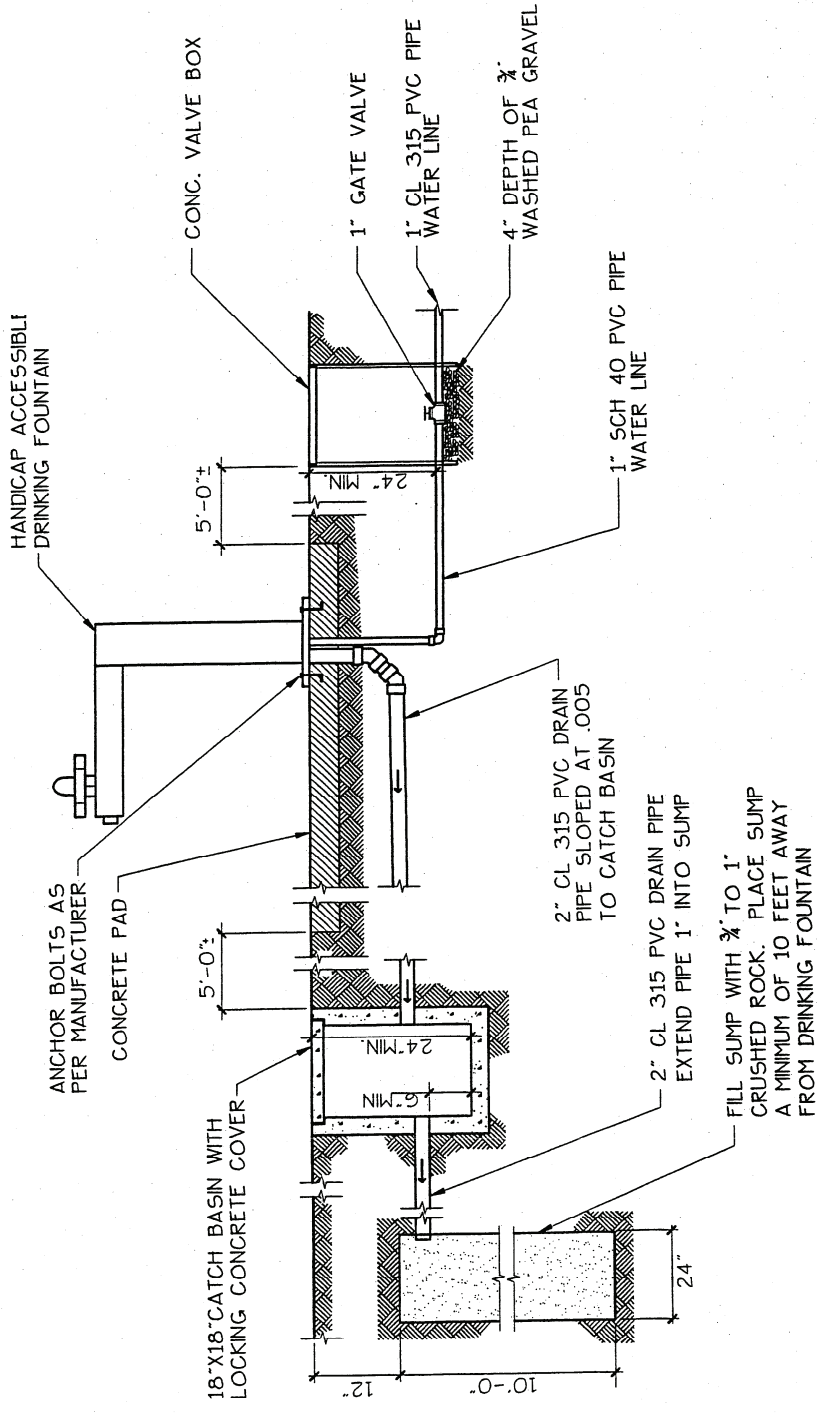
COUNTY OF SACRAMENTO
MUNICIPAL SERVICES AGENCY

IRRIGATION SYSTEM
TRENCHING

SCALE: NONE
DATE: 11/2000

SHEET:
L-18

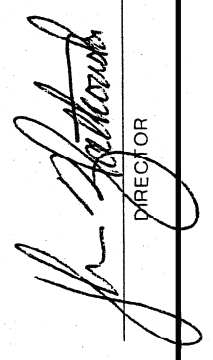
DRAWN BY: CA
CHECKED BY: GMM




 COUNTY OF SACRAMENTO
 MUNICIPAL SERVICES AGENCY

DRINKING FOUNTAIN

| | | |
|---------------|------------------|-------------|
| SCALE: NONE | DRAWN BY: TRU P. | SHEET: L-19 |
| DATE: 11/2000 | CHECKED BY: GMM | |

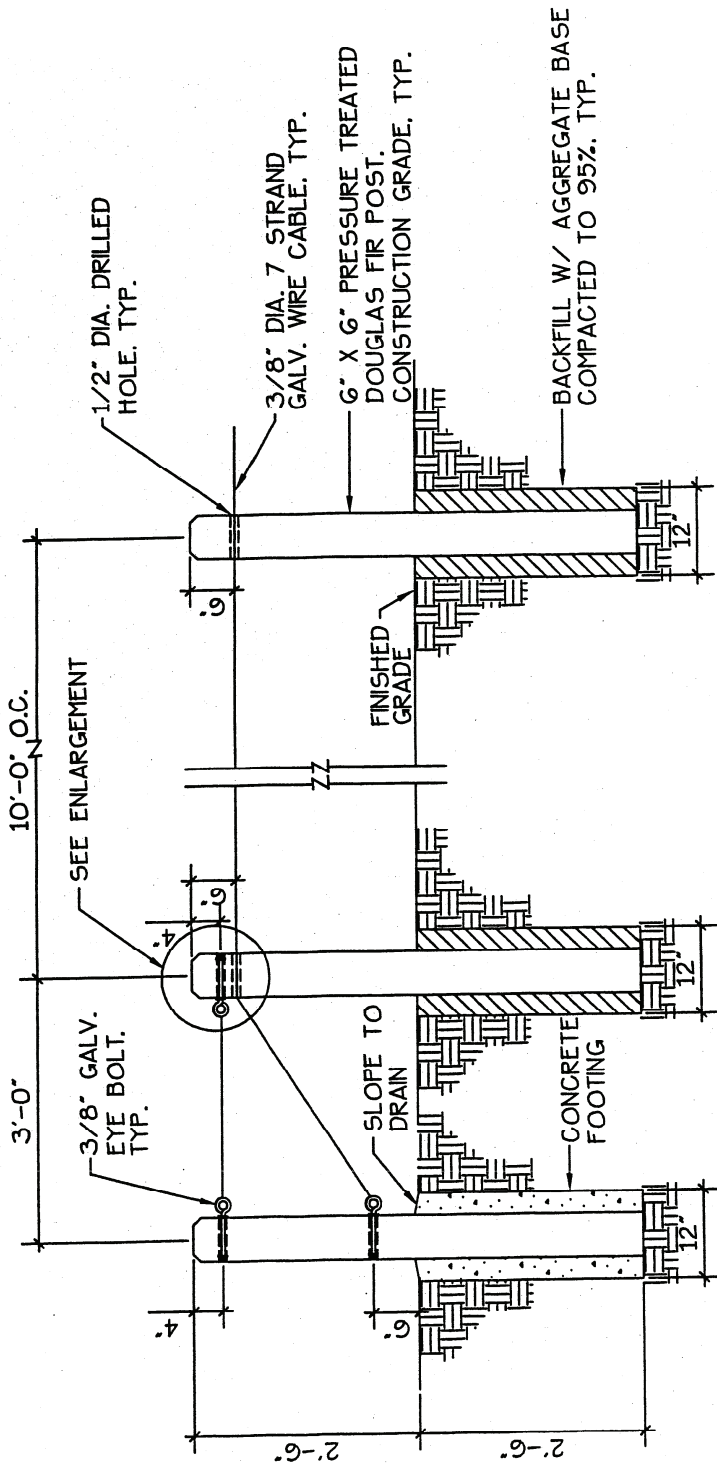

 DIRECTOR



COUNTY OF SACRAMENTO
MUNICIPAL SERVICES AGENCY

POST AND CABLE FENCING

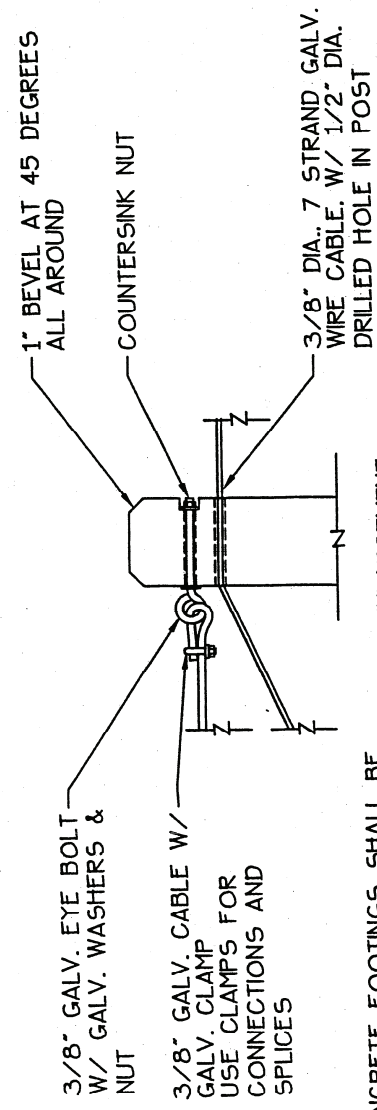
SCALE: NONE
DATE: 11/2000
DRAWN BY: GMM
CHECKED BY: GMM
SHEET: L-20



TERMINAL POST

LINE POST

SCALE: 1/2" = 1'-0"



ENLARGEMENT
SCALE: 1" = 1'-0"

NOTE: CONCRETE FOOTINGS SHALL BE INSTALLED AT ALL TERMINAL POSTS AND AT ALL BENDS.

J. J. [Signature]
DIRECTOR

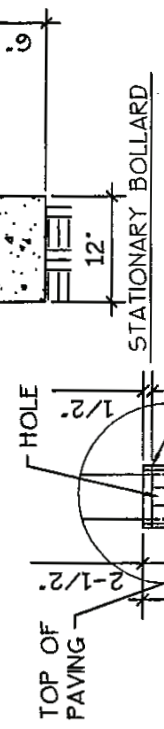
5'-0" CLEARANCE MAX.
OR AS SPECIFIED ON PLAN

3/16" STEEL PLATE WELDED TO TUBE AND GROUND SMOOTH

2-1/2" X 2-1/2" STEEL TUBE 3/16" THICK, PAINTED WITH 2 COATS OF PRIMER AND INSIGNIA YELLOW

FINISH SURFACE

CONCRETE FOOTING



STATIONARY BOLLARD

WELD A 1/4" THICK STEEL PLATE TO TOP OF TUBE

1/4" REBAR WELDED LOOP FOR LOCK 1" DIAMETER

1/4" THICK STEEL PLATE WELDED TO TUBE

1/2" THICK STEEL PLATE WITH 1/2" R CORNERS WITH 7/16" HOLE

1/2" ENLARGEMENT A

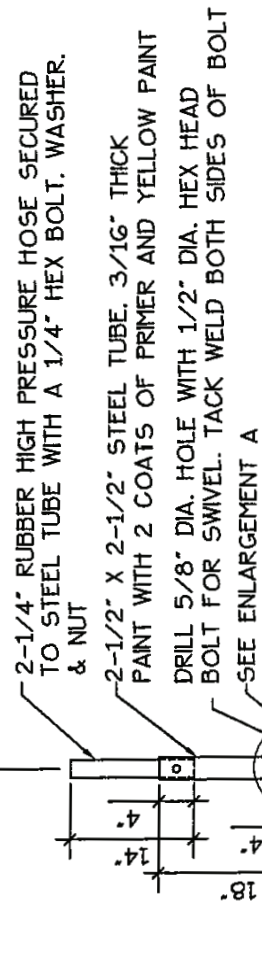
WELD A 4" WIDE BY 1/4" THICK STEEL PLATE TO TUBE, TYP.

1/2" ENLARGEMENT B

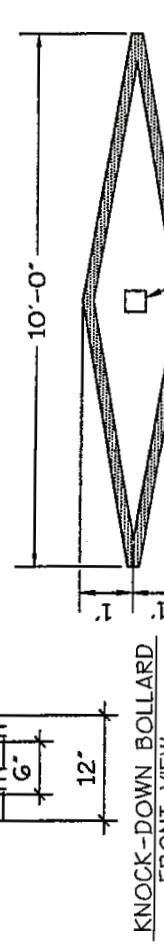
3/4"

TOP OF PAVING

ENLARGEMENT B



2-1/4" RUBBER HIGH PRESSURE HOSE SECURED TO STEEL TUBE WITH A 1/4" HEX BOLT, WASHER, & NUT
2-1/2" X 2-1/2" STEEL TUBE, 3/16" THICK PAINT WITH 2 COATS OF PRIMER AND YELLOW PAINT
DRILL 5/8" DIA. HOLE WITH 1/2" DIA. HEX HEAD BOLT FOR SWIVEL. TACK WELD BOTH SIDES OF BOLT
SEE ENLARGEMENT A
3" X 4" X 1/16" LONG, 3/16" THICK STEEL TUBING. PAINT ABOVE GROUND PORTION.
#4 REBAR WELDED TO TUBING, BOTH SIDES
CONCRETE FOOTING



KNOCK-DOWN BOLLARD FRONT VIEW

STREET SIDE

SEE ENLARGEMENT B BOLLARD STRIPING IF REQUIRED

1/2" HEX BOLT, WASHER & NUT. TACK WELD BOTH SIDES OF BOLT. DRILL 5/8" DIA. HOLE THRU POST & SLEEVE

1/4" REBAR WELDED LOOP FOR LOCK 1" DIAMETER

1/4" THICK STEEL PLATE WELDED TO TUBE

1/2" THICK STEEL PLATE WITH 1/2" R CORNERS WITH 7/16" HOLE

1/2" ENLARGEMENT A

WELD A 4" WIDE BY 1/4" THICK STEEL PLATE TO TUBE, TYP.

1/2" ENLARGEMENT B

3/4"

TOP OF PAVING

ENLARGEMENT B

KNOCK-DOWN BOLLARD SIDE VIEW

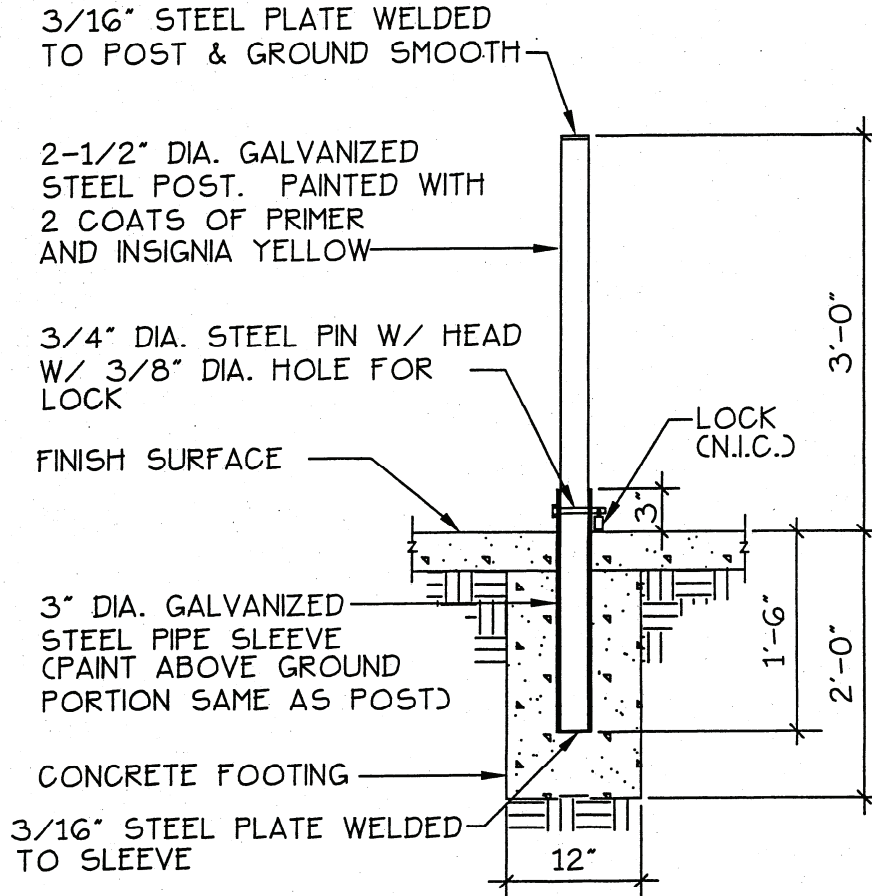
DIRECTOR



COUNTY OF SACRAMENTO
MUNICIPAL SERVICES AGENCY

KNOCK-DOWN BOLLARD & STATIONARY BOLLARD

| | | |
|---------------|-----------------|-------------|
| SCALE: NONE | DRAWN BY: GMM | SHEET: L-21 |
| DATE: 11/2000 | CHECKED BY: GMM | |



NOTE: DRILL A 13/16" DIA. HOLE THRU BOTH THE POST AND SLEEVE FOR PIN PLACEMENT.

J. Helthous
 DIRECTOR

COUNTY OF SACRAMENTO
 MUNICIPAL SERVICES AGENCY

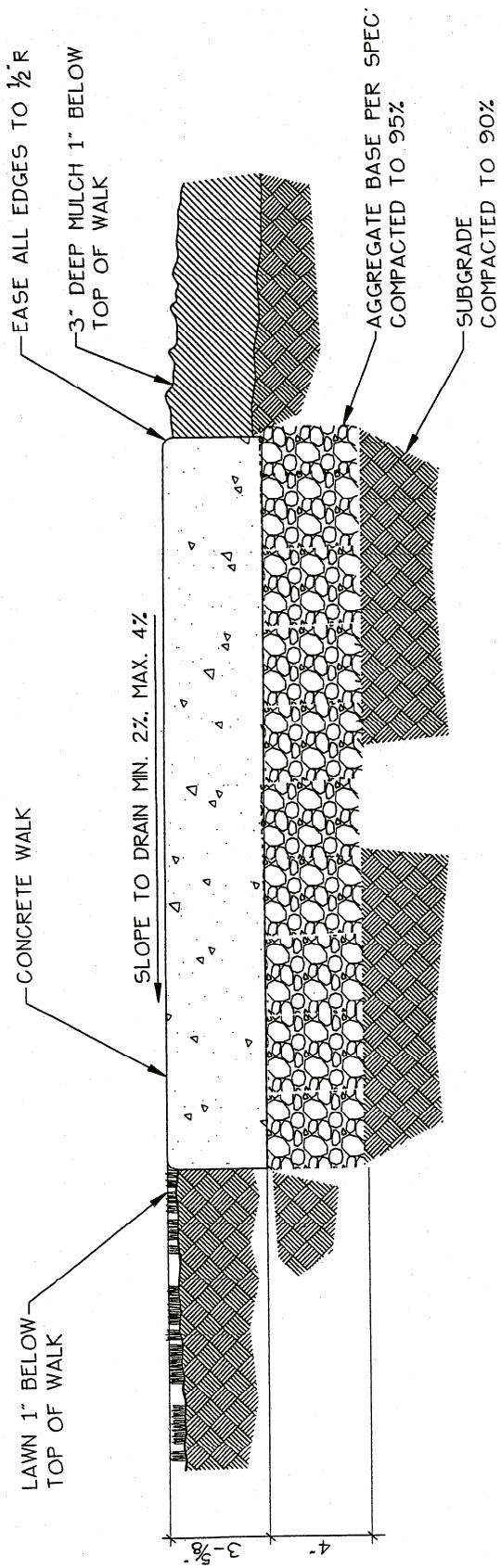


REMOVABLE BOLLARD

SCALE: NONE
 DATE: 11/2000

DRAWN BY: GMM
 CHECKED BY: GMM

SHEET:
L-22



NOTES:

1. PROVIDE 1" DEEP SCORE JOINTS AT 10'-0" ON CENTER.
2. PROVIDE EXPANSION JOINTS AT 20'-0" INTERVALS.
3. CLASS "B" CONCRETE.
4. MEDIUM BROOM FINISH PERPENDICULAR TO WALK EDGE UNLESS OTHERWISE SPECIFIED.
5. PROVIDE FULL DEPTH FELT EXPANSION JOINTS WHEN ABUTTING WALKS, WALLS AND BUILDINGS.

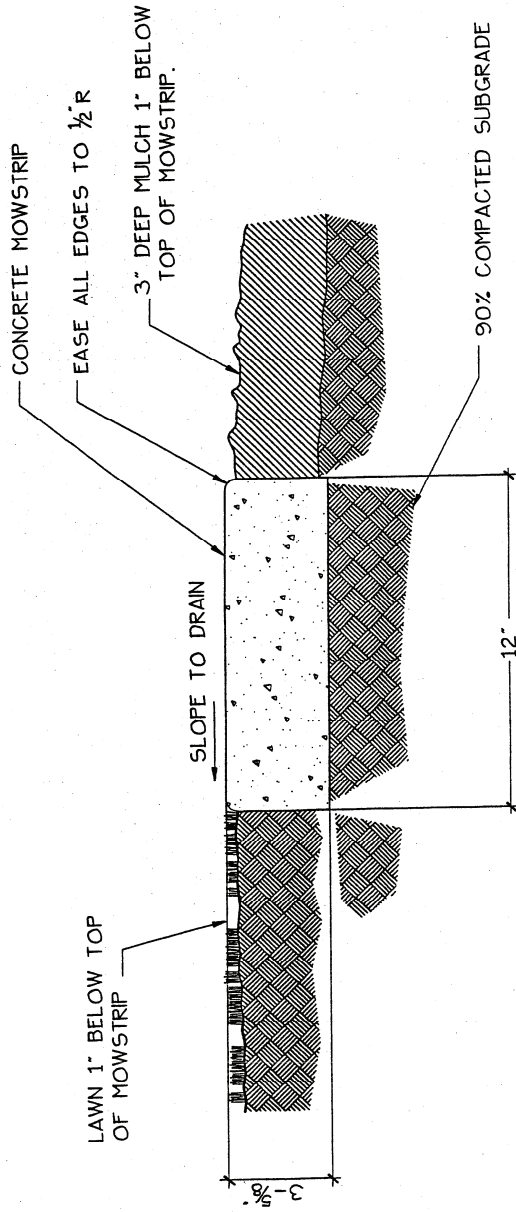
[Signature]
 DIRECTOR



COUNTY OF SACRAMENTO
 MUNICIPAL SERVICES AGENCY

CONCRETE WALK

| | | |
|---------------|-----------------|-------------|
| SCALE: NONE | DRAWN BY: GMM | SHEET: L-23 |
| DATE: 11/2000 | CHECKED BY: GMM | |



NOTES:

1. PROVIDE 1" DEEP SCORE JOINTS AT 10'-0" ON CENTER.
2. PROVIDE EXPANSION JOINTS AT 20'-0" INTERVALS AND AT CHANGES OF DIRECTION ALONG CURVILINEAR FORMS.
3. USE CLASS "B" CONCRETE, TYP.
4. MEDIUM BROOM FINISH UNLESS OTHERWISE SPECIFIED.
5. PROVIDE FULL DEPTH FELT EXPANSION JOINTS WHEN ABUTTING WALKS, WALLS AND BUILDINGS.

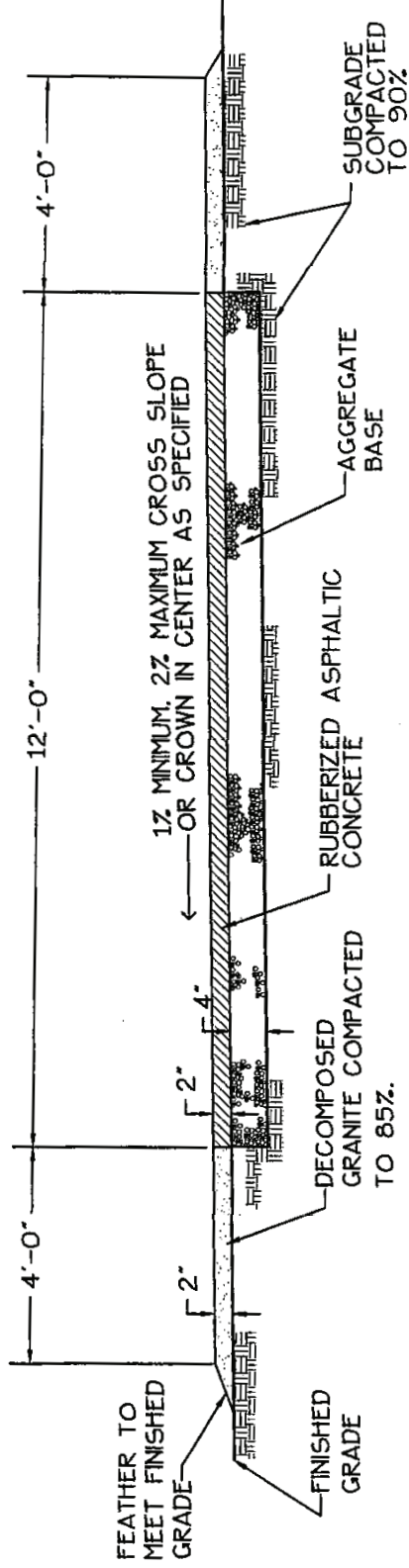
[Signature]
 DIRECTOR



COUNTY OF SACRAMENTO
 MUNICIPAL SERVICES AGENCY

CONCRETE MOWSTRIP

| | | |
|---------------|------------------|-------------|
| SCALE: NONE | DRAWN BY: TRU P. | SHEET: L-24 |
| DATE: 11/2000 | CHECKED BY: GMM | |



NOTES:

1. APPLY PRE-EMERGENT HERBICIDE UNDER DECOMPOSED GRANITE PRIOR TO INSTALLING IT.
2. APPLY PRE-EMERGENT HERBICIDE TO AGGREGATE BASE PRIOR TO PAVING ASPHALT.
3. APPLY A 4" WIDE SOLID YELLOW CENTERLINE STRIPE CONTINUOUSLY DOWN THE CENTER OF THE BIKETRAIL.



COUNTY OF SACRAMENTO
MUNICIPAL SERVICES AGENCY

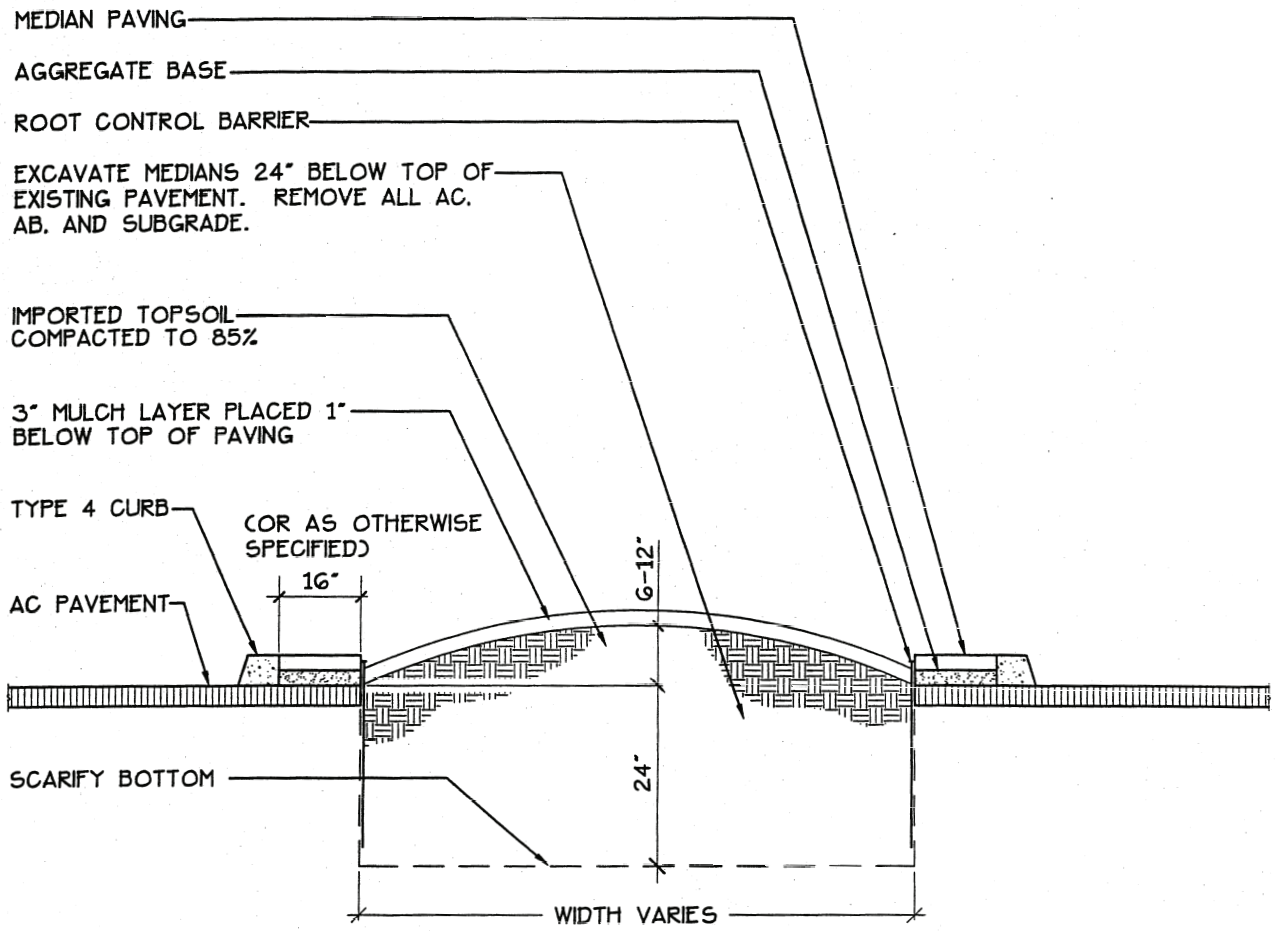
BIKETRAIL PAVING SECTION

SCALE: NONE
DATE: 11/2000

DRAWN BY: GMM
CHECKED BY: GMM

SHEET:
L-25

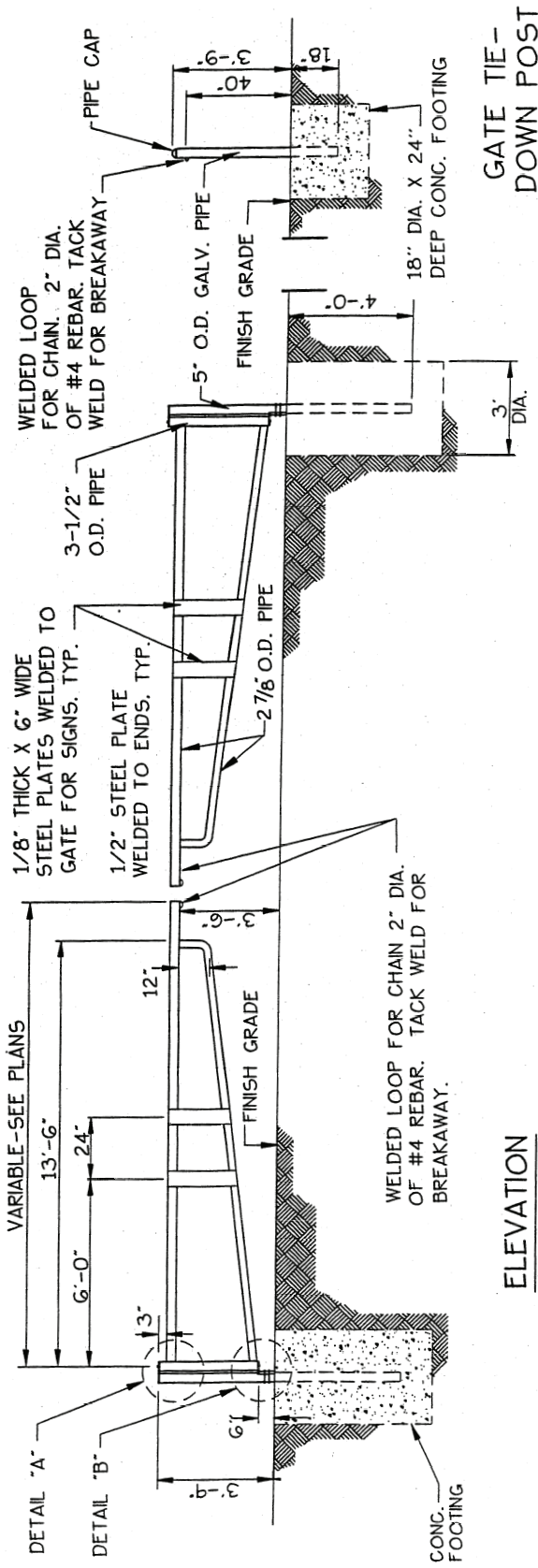
[Signature]
DIRECTOR



NOTE: CONTOUR OF MEDIAN WILL VARY DEPENDING UPON MEDIAN WIDTH. DO NOT EXCEED BID QUANTITY OF IMPORTED TOPSOIL TO ACHIEVE 12" HEIGHT.

J. H. Galloway
 DIRECTOR


| | | |
|---|----------------------------------|-----------------------|
| COUNTY OF SACRAMENTO MUNICIPAL SERVICES AGENCY | | |
| ROADWAY MEDIAN SECTION | | |
| SCALE: NONE DATE: 11/2000 | DRAWN BY: SLN CHECKED BY: GMM | SHEET: L-26 |



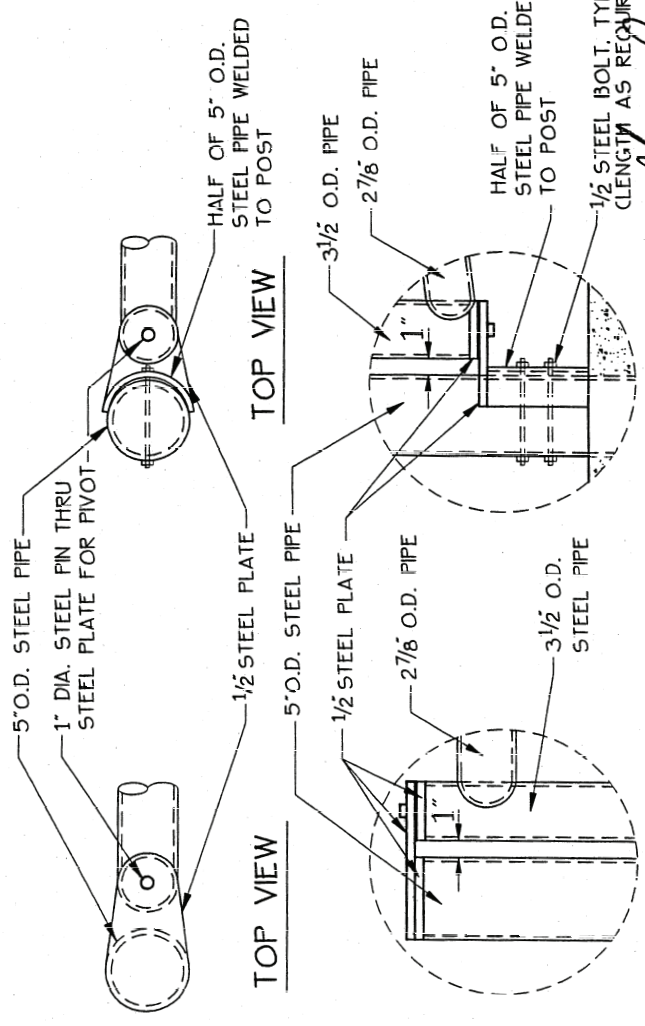
**GATE TIE -
DOWN POST**

NOTES:

1. ALL PIPES SHALL BE BLACK STEEL PIPES. OUTSIDE DIA. (O.D.) AND WELDED.
2. ALL STEEL TO BE PAINTED WITH 2 COATS OF PRIMER AND INSIGNIA YELLOW.
3. PROVIDE 2-5' O.D. PIPE AND INSTALL WITH CONC. FOOTING (18" X 24" D.) FOR TIE-DOWN WHEN GATE IS OPENED AND CLOSED.

| | | |
|--|---------------------|-------------------------|
|  COUNTY OF SACRAMENTO MUNICIPAL SERVICES AGENCY | | DOUBLE PIPE GATE |
| SCALE: NONE | DRAWN BY: TRU P. | SHEET: |
| DATE: 11/2000 | CHECKED BY: MIKE M. | L-28 |

ELEVATION

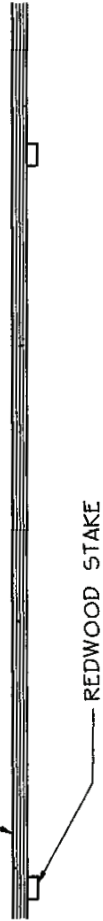


DETAIL "A"

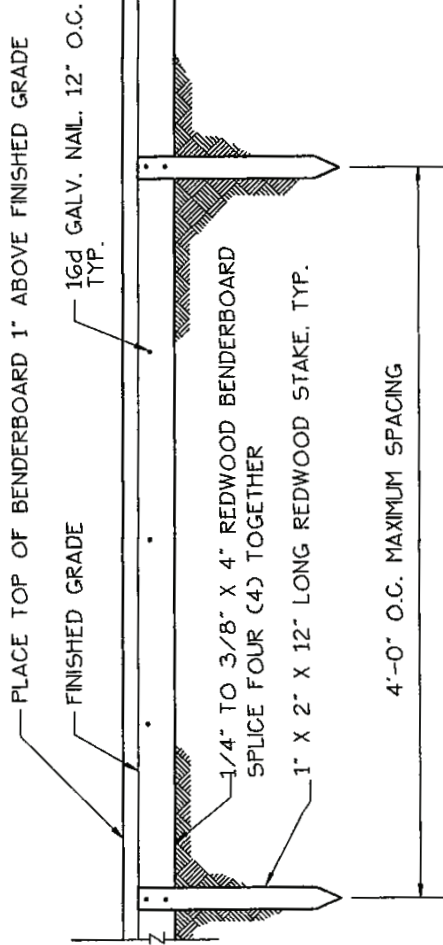
DETAIL "B"


 DIRECTOR

(4) 1/4" TO 3/8" X 4" REDWOOD BENDERBOARD
STAGGER SPICE JOINTS APART 3'-0" MINIMUM



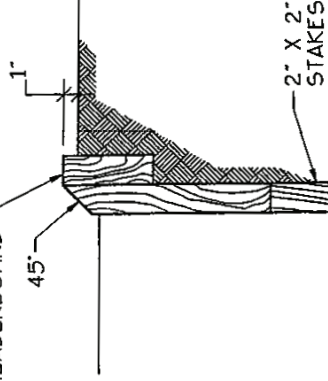
PLAN VIEW



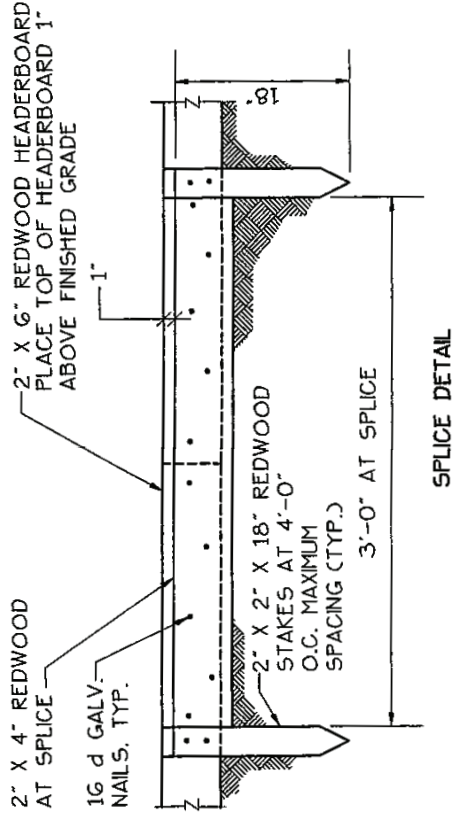
SIDE VIEW

1/4" TO 3/8" X 4" BENDERBOARD

2" X 6" HEADERBOARD



SECTION



SPICE DETAIL

2" X 6" HEADERBOARD

NOTES:

1. INSTALL ALL STAKES AND SPLICES ON PLANTING SIDE OF HEADERBOARD.
2. ALL NAILS SHALL BE GALVANIZED.
3. ALL REDWOOD SHALL BE ROUGH CONSTRUCTION COMMON GRADE IN ACCORDANCE TO CALIFORNIA REDWOOD ASSOCIATION GRADING RULES.
4. DRIVE STAKES TO RESISTANCE AND CUT TOP AT 45 DEGREE ANGLE.



**COUNTY OF SACRAMENTO
MUNICIPAL SERVICES AGENCY**

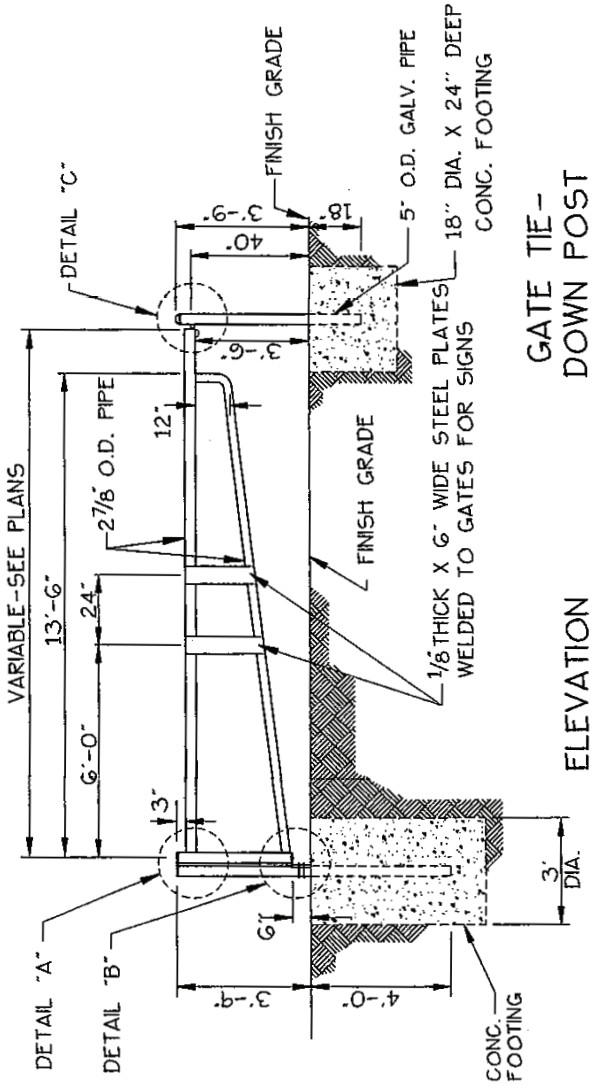
REDWOOD HEADERBOARD

SCALE: NONE
DATE: 11/2000

DRAWN BY: TRU P.
CHECKED BY: GMM

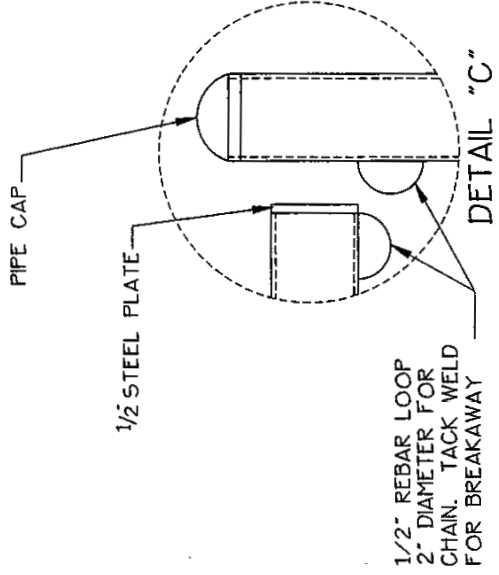
SHEET:
L-27

[Signature]
DIRECTOR

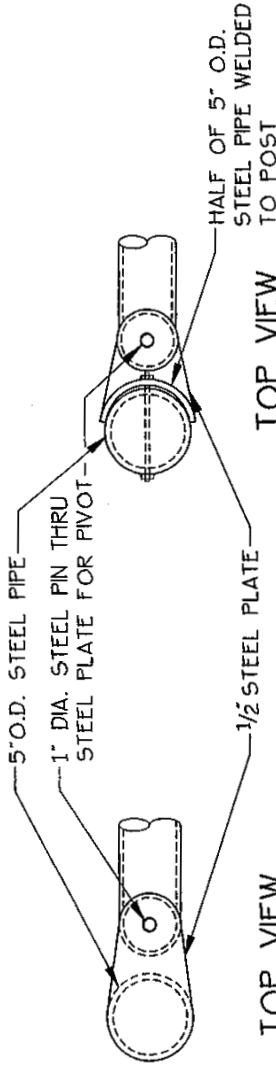


GATE TIE-DOWN POST

ELEVATION

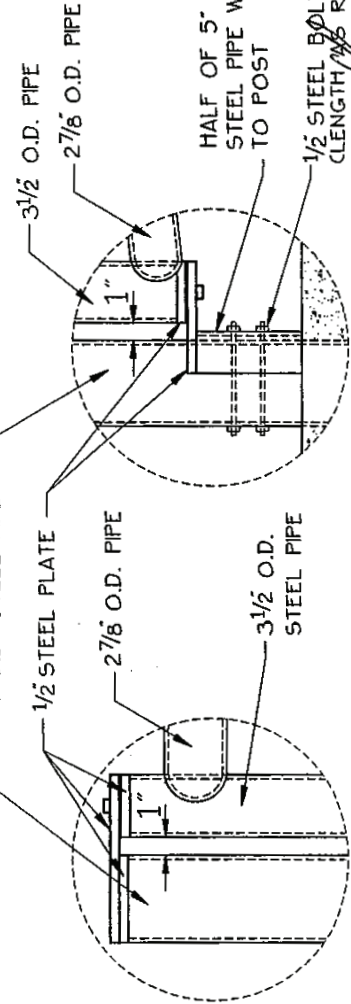


1/2" REBAR LOOP
2" DIAMETER FOR
CHAIN. TACK WELD
FOR BREAKAWAY



TOP VIEW

TOP VIEW



DETAIL "A"

DETAIL "B"

NOTES:

1. ALL PIPES SHALL BE BLACK STEEL PIPES. OUTSIDE DIA. (O.D.) AND WELDED.
2. ALL STEEL TO BE PAINTED WITH 2 COATS OF PRIMER AND INSIGNIA YELLOW.
3. PROVIDE 2-5" O.D. PIPE AND INSTALL WITH CONC. FOOTING (18"X24" D.) FOR TIE-DOWN WHEN GATE IS OPENED AND CLOSED.



COUNTY OF SACRAMENTO
MUNICIPAL SERVICES AGENCY

SINGLE PIPE GATE

| | | |
|---------------|------------------|-------------|
| SCALE: NONE | DRAWN BY: TRU P. | SHEET: L-29 |
| DATE: 11/2000 | CHECKED BY: GMM | |

[Signature]
DIRECTOR

